

CERTIFICATE OF LOCATION OF GOVERNMENT CORNER

County of Anoka

State of Minnesota

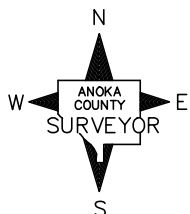
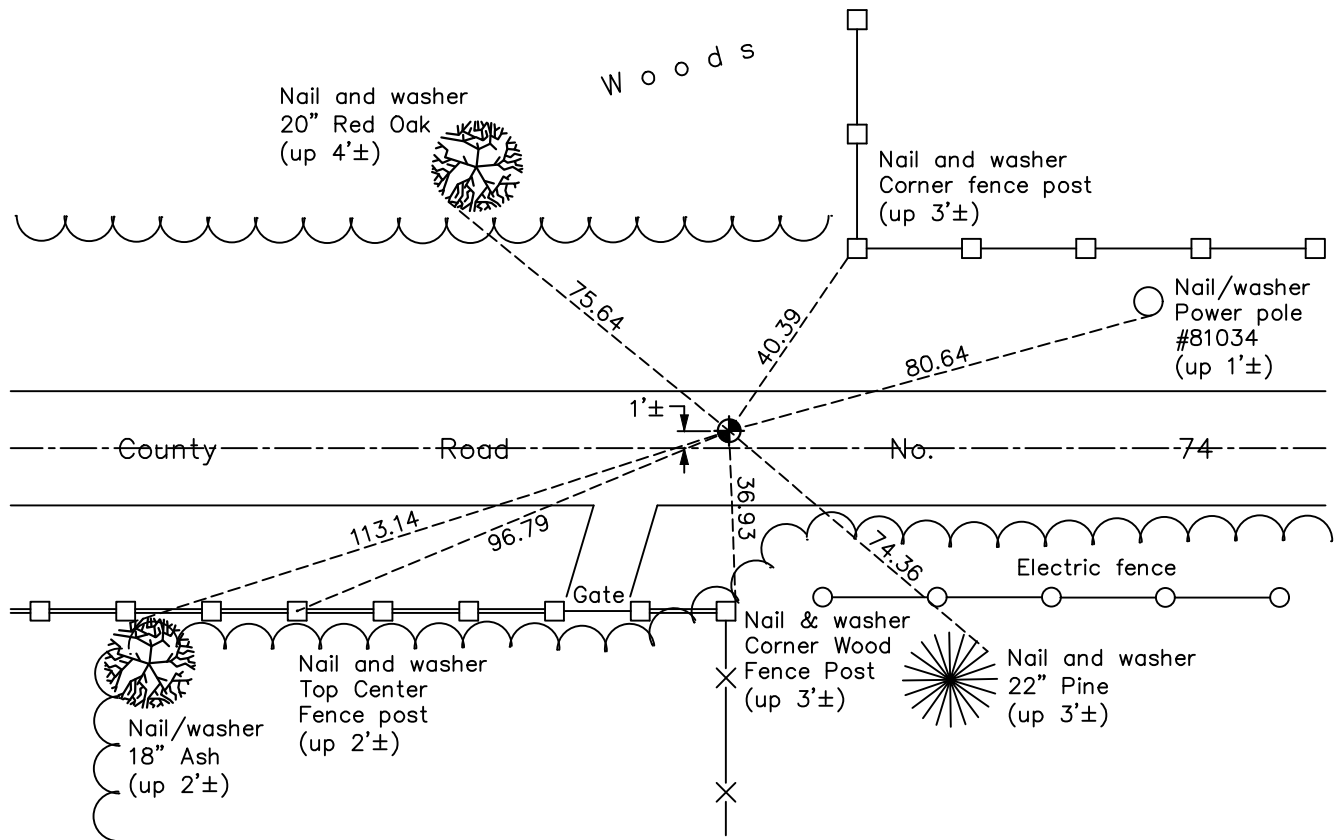
Southwest Corner of Sec. 4 Township 33 Range 23

On the 18th day of April, 1960, the described corner was evidenced by a concrete monument set by the Highway Department

and to perpetuate the location of said corner, at the exact location thereof, a permanent marker was placed consisting of a cast iron monument

AND on the 8th day of November, 2021, said permanent marker was found flush and the ties were updated

Updated reference ties are as shown below.



Revision Date

1/07/2022

N.A.D. 1983 Coordinates
(1996 Adjustment)

County Project Coordinates	
Northing	<u>222235.9360</u>
Easting	<u>510333.2737</u>
Date	<u>4/02/02</u>

I hereby certify that this United States public land survey monument record is correct and complete to the best of my knowledge and belief.

David Zieglmeier Date 1/19/23

David Zieglmeier Anoka County Surveyor
Minnesota License Number 46179

HISTORY OF GOVERNMENT CORNER

Page No. 25

County of Anoka

State of Minnesota

Southwest Corner of Sec. 4 Township 33 Range 23

CORNER HISTORY:

April 30, 1957 - County Highway Department found a concrete monument down 0.5'± and updated the ties.

April 18, 1960 - Set cast iron monument down 0.1'± on top of broken concrete monument and updated ties.

September 22, 1964 - Found cast iron monument down 0.1'± and updated ties.

June 17, 1970 - Replaced solid cast iron monument with removable cast iron monument flush and updated ties.

July 22, 1974 - Found cast iron monument and updated ties.

June 29, 1977 - Found cast iron monument and updated ties.

June 9, 1981 - Found cast iron monument and updated ties.

June 12, 1984 - Found cast iron monument and updated ties.

June 1, 1987 - Found cast iron monument and updated ties.

August 6, 1992 - Found cast iron monument and updated ties.

August 6, 1997 - Found cast iron monument and updated ties.

June 20, 2000 - Found cast iron monument and updated ties.

April 2, 2002 - Established NAD 1983 (1996 adj.) Anoka County project coordinates by static GPS methods.

August 30, 2012 - Found cast iron monument. Verified position by VRS GPS methods. Updated ties.

July 8, 2015 - Found cast iron monument in good condition and loosened monument top prior to road overlay.

October 19, 2015 - Raised cast iron monument top flush after road overlay and updated ties.

April 19, 2018 - Found cast iron monument flush. Verified position by VRS GPS methods. Updated ties.

November 8, 2021 - Found cast iron monument flush. Verified position by VRS GPS methods. Updated ties.