

# CERTIFICATE OF LOCATION OF GOVERNMENT CORNER

County of Anoka

State of Minnesota

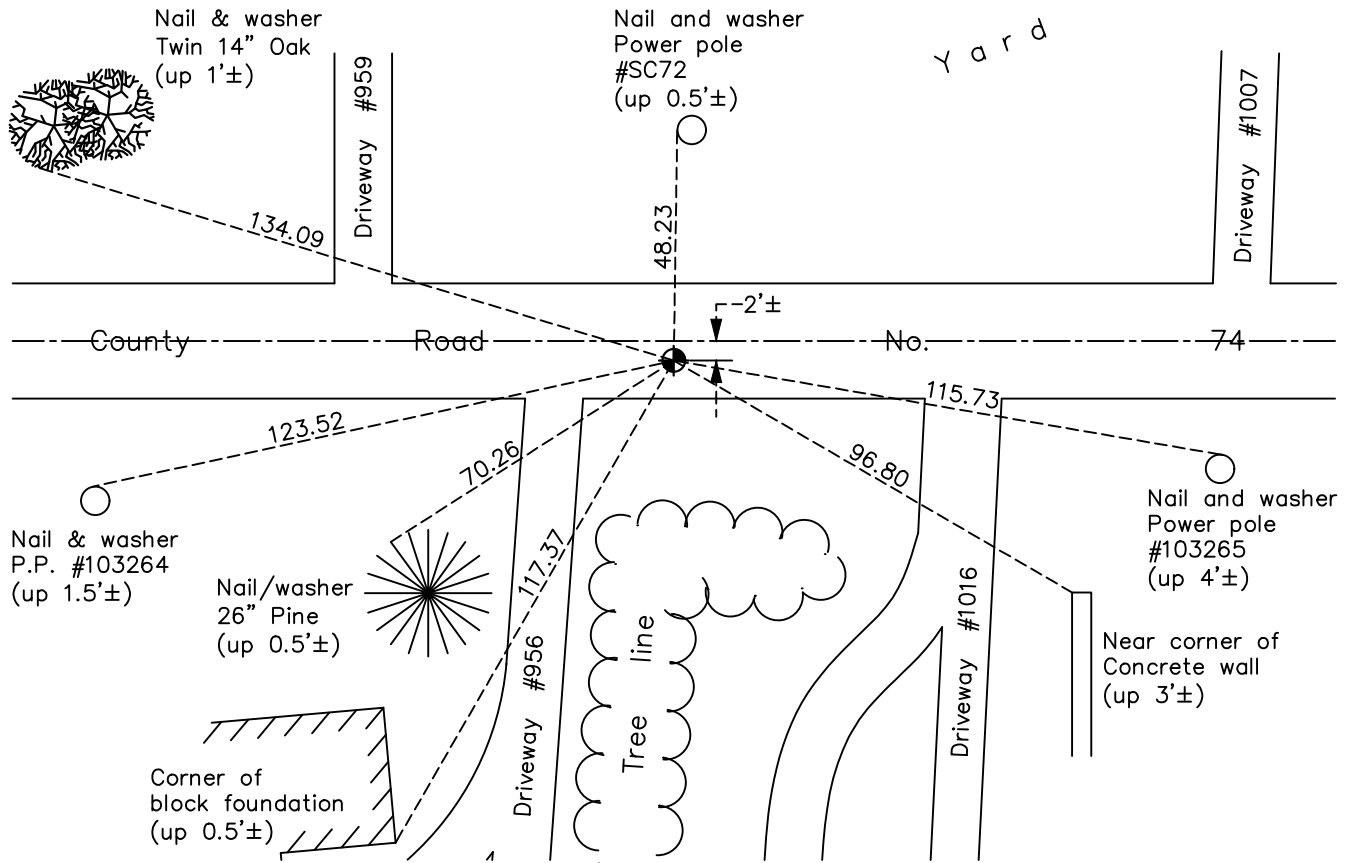
## Northeast Corner of Sec. 7 Township 33 Range 23

On the 28th day of August, 1961, the described corner was evidenced by an iron pipe

and to perpetuate the location of said corner, at the exact location thereof, a permanent marker was placed consisting of a cast iron monument

AND on the 19th day of May, 2023, said permanent marker was set cast iron monument after road construction, verified position using RTK GPS methods. Updated ties.

Updated reference ties are as shown below.



Revision Date  
5/31/2023

N.A.D. 1983 Coordinates  
 (1996 Adjustment)

County Project Coordinates	
Northing	<u>222283.5581</u>
Easting	<u>505041.3095</u>
Date	<u>4/04/02</u>

I hereby certify that this United States public land survey monument record is correct and complete to the best of my knowledge and belief.

*David Zieglmeier* Date 6/28/23

David Zieglmeier Anoka County Surveyor  
 Minnesota License Number 46179

# HISTORY OF GOVERNMENT CORNER

Page No. 27

County of Anoka

State of Minnesota

## Northeast Corner of Sec. 7 Township 33 Range 23

### **CORNER HISTORY:**

August 28, 1961 - Found iron pipe, replaced with cast iron monument flush and established ties to monument.

7/22/74, 6/29/77, 6/10/81, 6/12/84, 8/30/90, 8/6/92, 8/6/97 - Found cast iron monument and updated ties.

May 24, 1999 - Found cast iron monument, set construction ties and removed prior to road construction. Set cast iron monument after road construction and updated ties.

May 18, 2000 - Found cast iron monument and updated ties.

April 4, 2002 - Found cast iron monument and updated ties. Established NAD 1983 (1996 adj.) Anoka County project coordinates by static GPS methods.

1/18/13, 5/1/18, 10/22/21 - Found cast iron monument. Verified position by VRS GPS methods. Updated ties.

May 19, 2023 - set cast iron monument after road construction, verified position using RTK GPS methods. Updated ties. Job no. 22-131