

CERTIFICATE OF LOCATION OF GOVERNMENT CORNER

County of Anoka

State of Minnesota

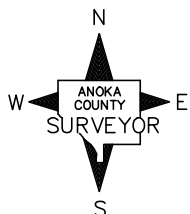
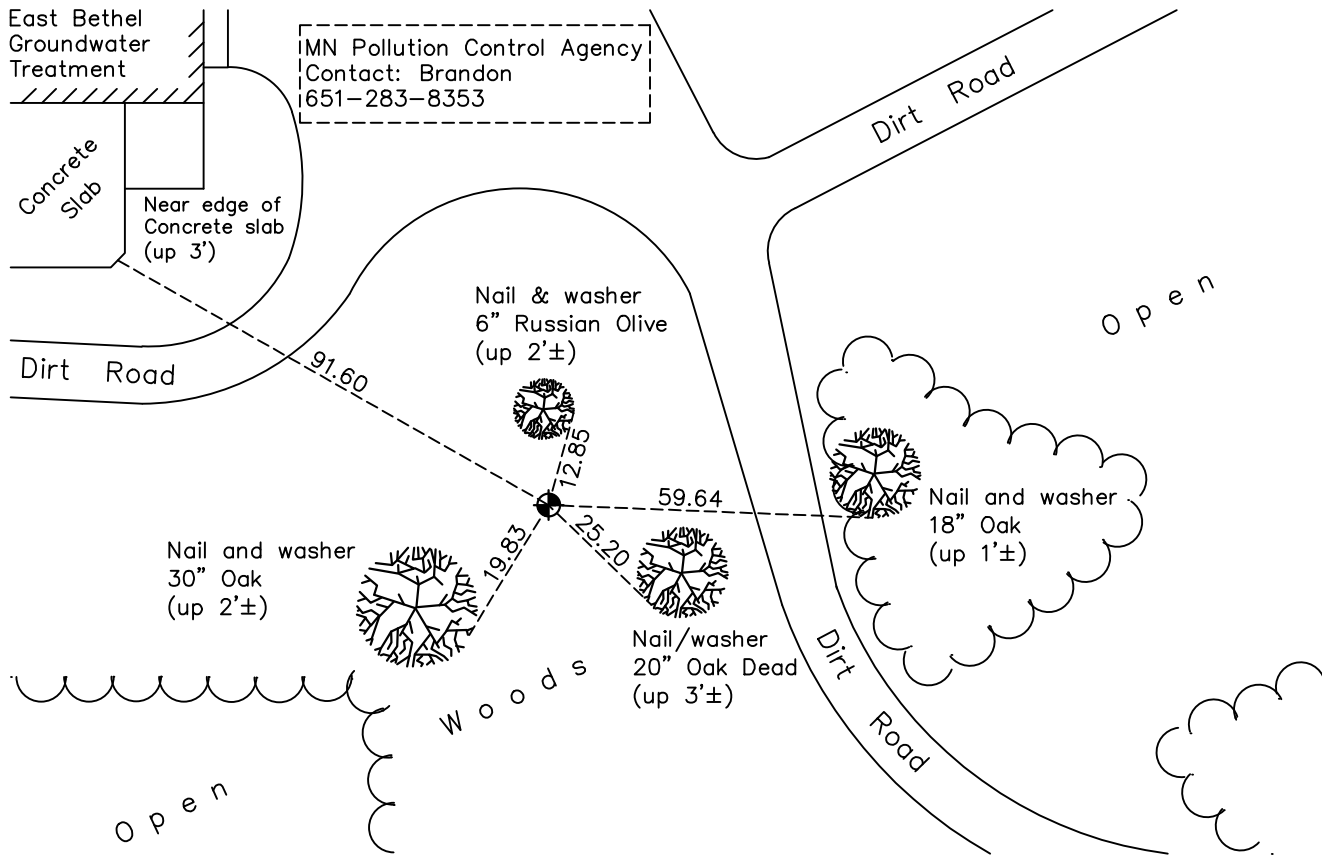
East 1/4 Corner of Sec. 8 Township 33 Range 23

On the 23rd day of June, 1970, the described corner was evidenced by a 3/4" iron pipe

and to perpetuate the location of said corner, at the exact location thereof, a permanent marker was placed consisting of a cast iron monument with a sign and post on the south side

AND on the 8th day of November, 2021, said permanent marker was found down 0.1'± and the ties were updated

Updated reference ties are as shown below.



Revision Date

1/07/2022

N.A.D. 1983 Coordinates
(1996 Adjustment)

County Project Coordinates

Northing 219534.3317

Easting 510285.6267

Date 7/02/02

I hereby certify that this United States public land survey monument record is correct and complete to the best of my knowledge and belief.

David Zieglmeier Date 1/19/23

David Zieglmeier Anoka County Surveyor

Minnesota License Number 46179

HISTORY OF GOVERNMENT CORNER

Page No. 31

County of Anoka

State of Minnesota

East 1/4 Corner of Sec. 8 Township 33 Range 23

CORNER HISTORY:

February 5, 1963 - Found 3/4" iron pipe down 0.5', drove down and set another 3/4" iron pipe over it and flush. Established ties to monument.

June 23, 1970 - Replaced iron pipe with cast iron monument flush and updated ties.

August 1, 1974 - Found cast iron monument and updated ties.

June 29, 1977 - Found cast iron monument and updated ties.

June 15, 1981 - Found cast iron monument and updated ties.

June 15, 1984 - Found cast iron monument and updated ties.

June 8, 1987 - Found cast iron monument and updated ties.

August 11, 1992 - Found cast iron monument and updated ties.

August 15, 1997 - Found cast iron monument and updated ties.

July 2, 2002 - Established NAD 1983 (1996 adj.) Anoka County project coordinates by static GPS methods.

April 3, 2013 - Found cast iron monument and updated ties.

March 8, 2019 - Found cast iron monument down 0.1'±. Verified position by VRS GPS methods. Updated ties.

November 8, 2021 - Found cast iron monument down 0.1'±. Verified position by VRS GPS methods. Updated ties.