

CERTIFICATE OF LOCATION OF GOVERNMENT CORNER

County of Anoka

State of Minnesota

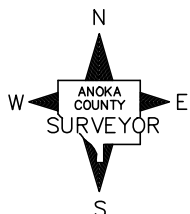
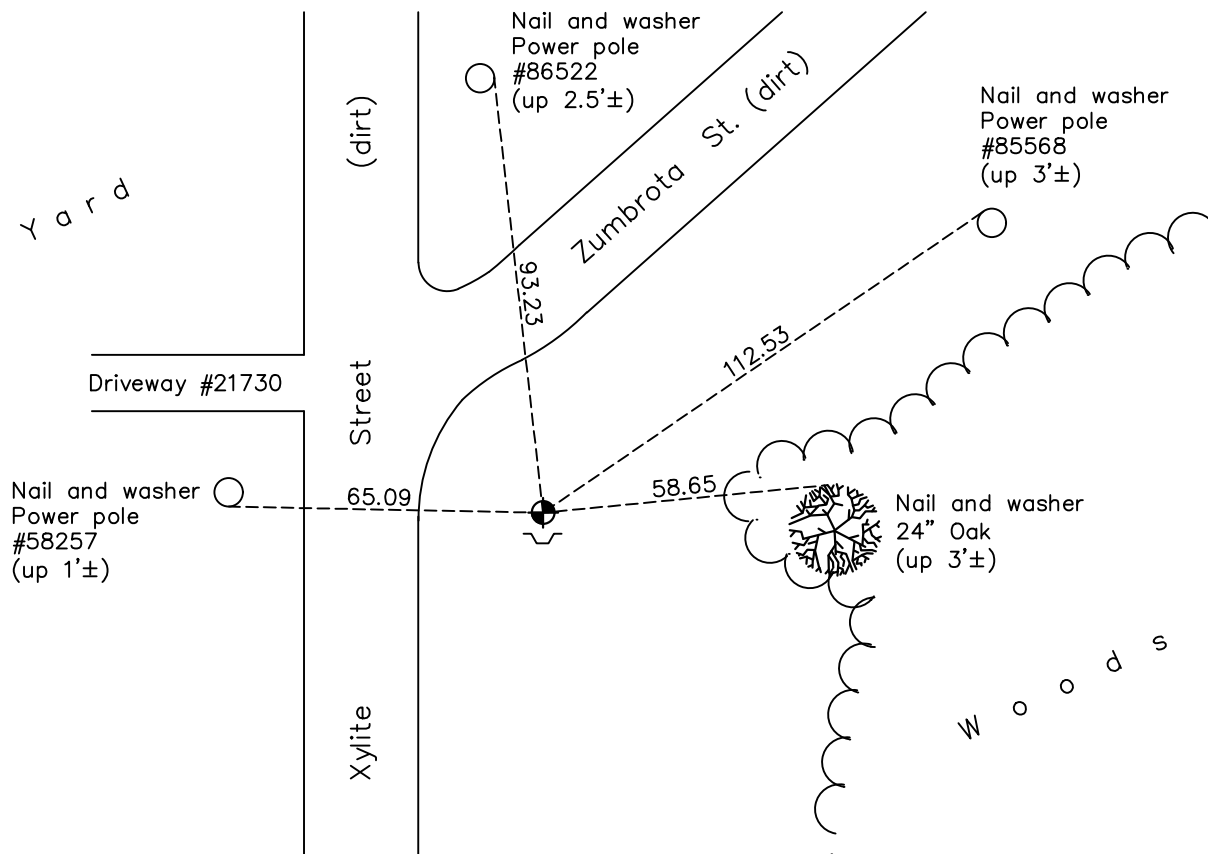
East 1/4 Corner of Sec. 9 Township 33 Range 23

On the 20th day of March, 1973, the described corner was evidenced by area resurvey

and to perpetuate the location of said corner, at the exact location thereof, a permanent marker was placed consisting of a cast iron monument with a sign and post on the south side

AND on the 6th day of October, 2021, said permanent marker was found down 0.2'± and the ties were updated

Updated reference ties are as shown below.



Revision Date

1/07/2022

N.A.D. 1983 Coordinates
(1996 Adjustment)

County Project Coordinates	
Northing	<u>219529.8693</u>
Easting	<u>515690.7015</u>
Date	<u>4/04/02</u>

I hereby certify that this United States public land survey monument record is correct and complete to the best of my knowledge and belief.

David Zieglmeier Date 1/19/23

David Zieglmeier Anoka County Surveyor
Minnesota License Number 46179

HISTORY OF GOVERNMENT CORNER

Page No. 32

County of Anoka

State of Minnesota

East 1/4 Corner of Sec. 9 Township 33 Range 23

CORNER HISTORY:

March 20, 1973 - Set cast iron monument using area resurvey and established ties to the monument.

August 1, 1974 - Found cast iron monument and updated ties.

June 29, 1977 - Found cast iron monument and updated ties.

June 10, 1981 - Found cast iron monument and updated ties.

June 15, 1984 - Found cast iron monument and updated ties.

August 6, 1992 - Found cast iron monument and updated ties.

August 11, 1997 - Found cast iron monument and updated ties.

August 3, 2000 - Found cast iron monument and updated ties.

April 4, 2002 - Found cast iron monument and updated ties. Established NAD 1983 (1996 adj.) Anoka County project coordinates by static GPS methods.

January 2, 2013 - Found cast iron monument down 0.3'± and updated ties.

April 19, 2018 - Found cast iron monument down 0.3'±. Verified position by VRS GPS methods. Updated ties.

October 6, 2021 - Found cast iron monument down 0.2'±. Verified position by VRS GPS methods. Updated ties.