

CERTIFICATE OF LOCATION OF GOVERNMENT CORNER

County of Anoka

State of Minnesota

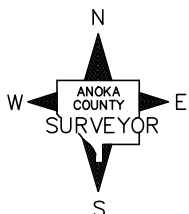
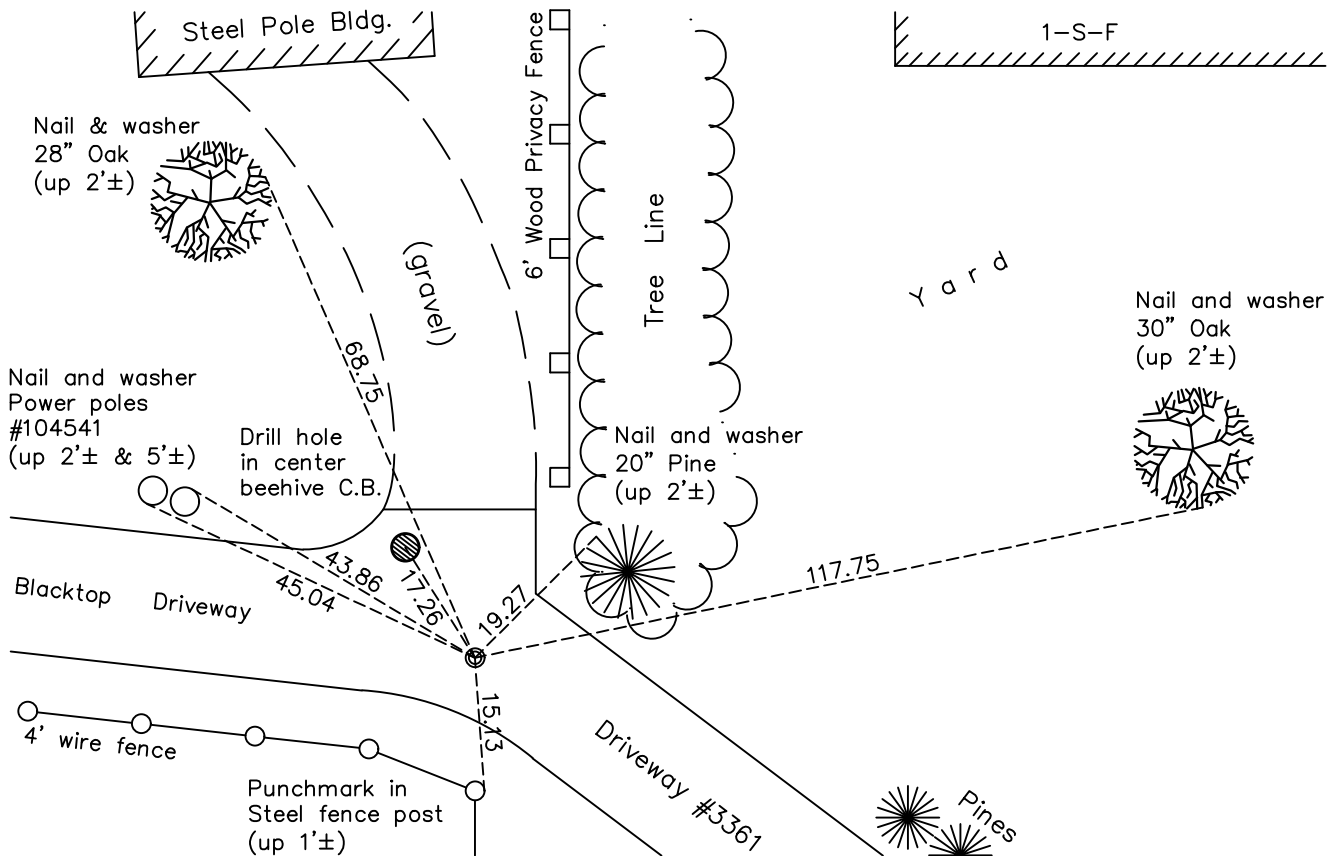
West 1/4 Corner of Sec. 11 Township 33 Range 23

On the 8th day of November, 1963, the described corner was evidenced by area resurvey

and to perpetuate the location of said corner, at the exact location thereof, a permanent marker was placed consisting of a cast iron monument

AND on the 21st day of October, 2021, said permanent marker was Found 1/2" iron pipe with cap and updated the ties.

Updated reference ties are as shown below.



N.A.D. 1983 Coordinates
(1996 Adjustment)

County Project Coordinates

Northing 219565.9113

Easting 520971.1380

Date 7/02/02

Revision Date

1/07/2022

I hereby certify that this United States public land survey monument record is correct and complete to the best of my knowledge and belief.

David Zieglmeier Date 1/19/23

David Zieglmeier Anoka County Surveyor

Minnesota License Number 46179

HISTORY OF GOVERNMENT CORNER

Page No. 33

County of Anoka

State of Minnesota

West 1/4 Corner of Sec. 11 Township 33 Range 23

CORNER HISTORY:

November 8, 1963 - Set cast iron monument up 0.1'± using area resurvey. Established ties to the monument.

June 16, 1970 - Found cast iron monument to be moved slightly. Straightened and reset flush. Updated ties.

July 31, 1974 - Found cast iron monument and updated ties.

June 29, 1977 - Found cast iron monument and updated ties.

June 9, 1981 - Found cast iron monument and updated ties.

June 13, 1984 - Found cast iron monument and updated ties.

November 20, 1987 - Found cast iron monument missing due to driveway construction. Reset position of corner with a P.K. nail using remaining ties.

August 10, 1992 - Found a P.K. nail and updated ties.

August 3, 2000 - Found a P.K. nail and updated ties.

July 2, 2002 - Established NAD 1983 (1996 adj.) Anoka County project coordinates by static GPS methods.

July 30, 2012 - Found a P.K. nail, verified position by VRS GPS methods and updated ties.

January 16, 2013 - Set 1/2" iron pipe w/cap using static GPS methods and updated ties.

April 16, 2018 - Found 1/2" iron pipe w/cap flush and updated the ties.

October 21, 2021 - Found 1/2" iron pipe w/cap flush and updated the ties.