

# CERTIFICATE OF LOCATION OF GOVERNMENT CORNER

County of Anoka

State of Minnesota

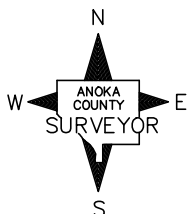
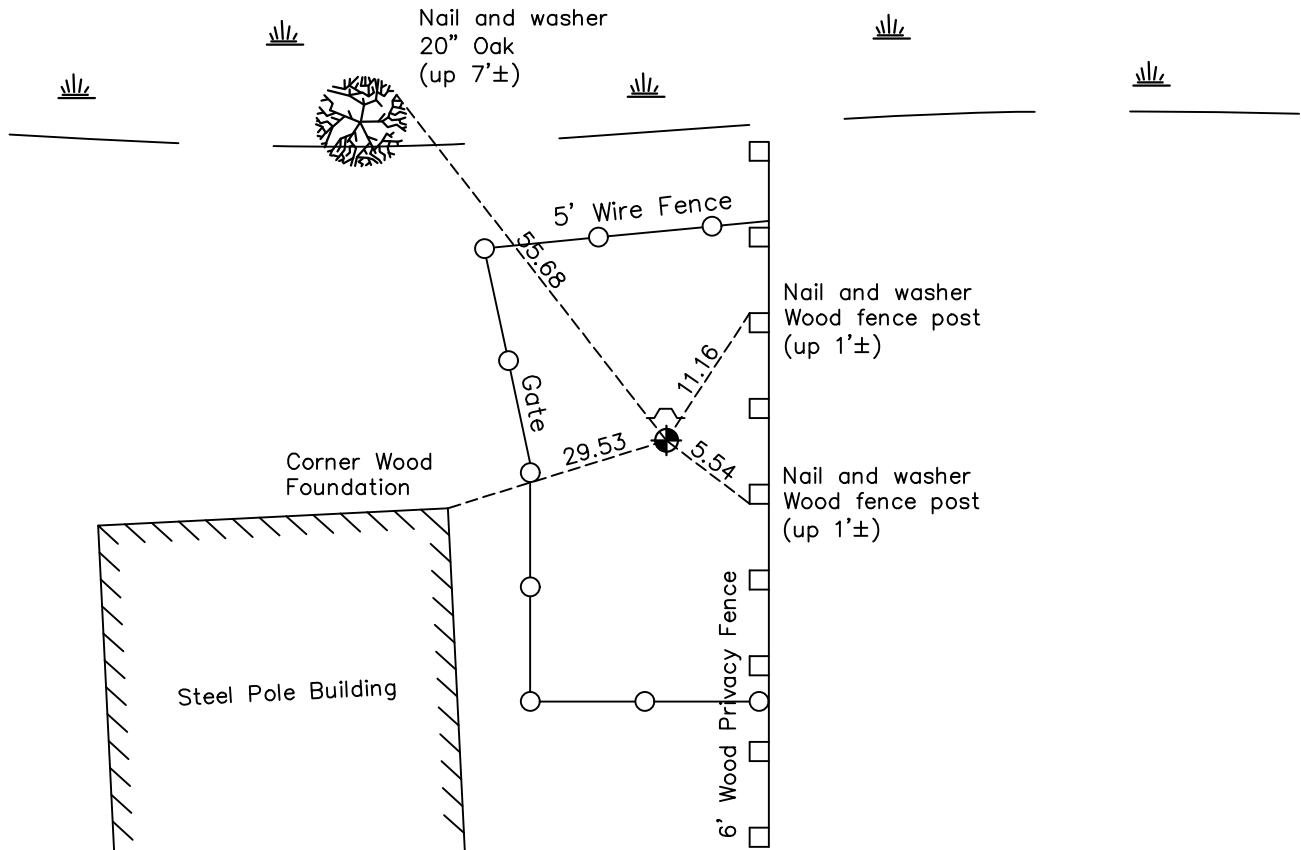
Witness Corner of Sec. 11 Township 33 Range 23  
(on west line of NW 1/4)

On the 18th day of April, 1984, the described corner was evidenced by area resurvey

and to perpetuate the location of said corner, at the exact location thereof, a permanent marker was placed consisting of a cast iron monument with a sign and post on the north side

AND on the 21st day of October, 2021, said permanent marker was found down 0.3'± and the ties were updated

Updated reference ties are as shown below.



Revision Date

1/07/2022

N.A.D. 1983 Coordinates  
(1996 Adjustment)

County Project Coordinates	
Northing	<u>219716.2541</u>
Easting	<u>520972.7434</u>
Date	<u>7/02/02</u>

I hereby certify that this United States public land survey monument record is correct and complete to the best of my knowledge and belief.

David Zieglmeier Date 1/19/23

David Zieglmeier Anoka County Surveyor  
Minnesota License Number 46179

# HISTORY OF GOVERNMENT CORNER

Page No. 33A

County of Anoka

State of Minnesota

Witness Corner of Sec. 11 Township 33 Range 23  
(on west line of NW 1/4)

## **CORNER HISTORY:**

April 18, 1984 - Set cast iron monument flush using area resurvey and established ties to monument.

September 14, 1987 - Updated ties and removed cast iron monument prior to construction.

November 20, 1987 - Set cast iron monument after construction.

August 26, 1992 - Found cast iron monument and updated ties.

August 3, 2000 - Found cast iron monument and updated ties.

July 2, 2002 - Established NAD 1983 (1996 adj.) Anoka County project coordinates by static GPS methods.

July 30, 2012 - Found cast iron monument. Verified position by VRS GPS methods. Updated ties.

April 16, 2018 - Found cast iron monument down 0.3'± and updated ties.

October 21, 2021 - Found cast iron monument down 0.3'± and updated ties.