

CERTIFICATE OF LOCATION OF GOVERNMENT CORNER

County of Anoka

State of Minnesota

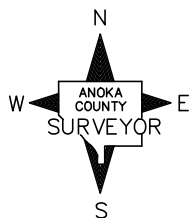
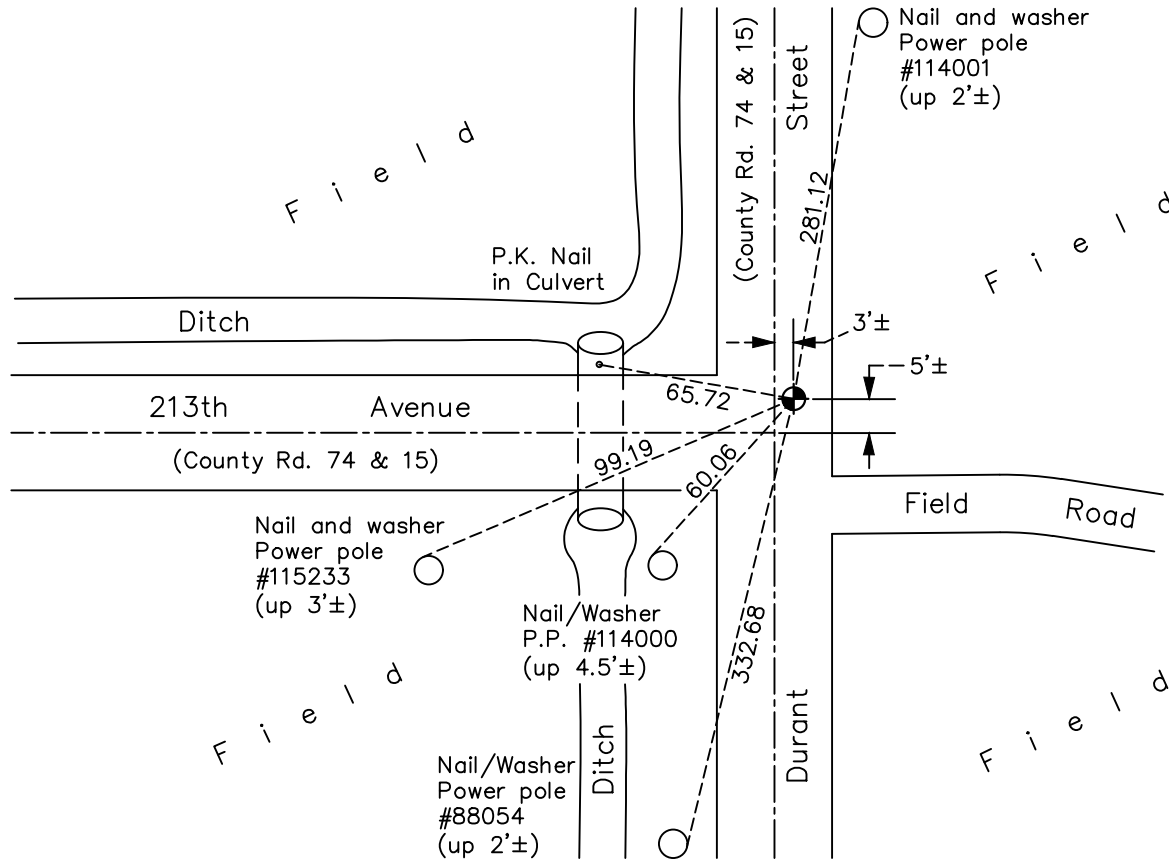
Northeast Corner of Sec. 14 Township 33 Range 23

On the 8th day of November, 1963, the described corner was evidenced by a 3/4" iron pipe set from area resurvey

and to perpetuate the location of said corner, at the exact location thereof, a permanent marker was placed consisting of a cast iron monument August 3, 1964

AND on the 26th day of October, 2021, said permanent marker was found flush and the ties were updated.

Updated reference ties are as shown below.



Revision Date
 1/07/2022

N.A.D. 1983 Coordinates
 (1996 Adjustment)

County Project Coordinates	
Northing	<u>216823.3139</u>
Easting	<u>526249.2417</u>
Date	<u>4/10/02</u>

I hereby certify that this United States public land survey monument record is correct and complete to the best of my knowledge and belief.
David Zieglmeier Date 1/19/23
 David Zieglmeier Anoka County Surveyor
 Minnesota License Number 46179

HISTORY OF GOVERNMENT CORNER

Page No. 36

County of Anoka

State of Minnesota

Northeast Corner of Sec. 14 Township 33 Range 23

CORNER HISTORY:

November 8, 1963 - Set 3/4" iron pipe down 0.3' using area resurvey and established ties to the iron pipe.

August 3, 1964 - Replaced 3/4" iron pipe with cast iron monument flush in blacktopped road.

June 16, 1970 - Found cast iron monument and updated ties.

May 11, 1973 - Found cast iron monument and updated ties.

July 31, 1974 - Found cast iron monument and updated ties.

June 29, 1977 - Found cast iron monument and updated ties.

June 9, 1981 - Found cast iron monument and updated ties.

June 13, 1984 - Found cast iron monument and updated ties.

October 11, 1985 - Reset cast iron monument after road construction using pre-construction ties. Updated corner ties.

August 21, 1986 - Found cast iron monument and updated ties.

August 4, 1992 - Found cast iron monument and updated ties.

August 11, 1997 - Found cast iron monument and updated ties.

August 30, 2000 - Found cast iron monument and updated ties.

April 10, 2002 - Established NAD 1983 (1996 adj.) Anoka County project coordinates by static GPS methods.

April 20, 2012 - Found cast iron monument. Verified position by VRS GPS methods. Updated ties.

May 14, 2013 - Found cast iron monument, verified position by VRS GPS methods and updated ties. Loosened monument top prior to road overlay.

April 19, 2018 - Found cast iron monument flush. Verified position by VRS GPS methods. Updated ties.

October 26, 2021 - Found cast iron monument flush. Verified position by VRS GPS methods. Updated ties.