

CERTIFICATE OF LOCATION OF GOVERNMENT CORNER

County of Anoka

State of Minnesota

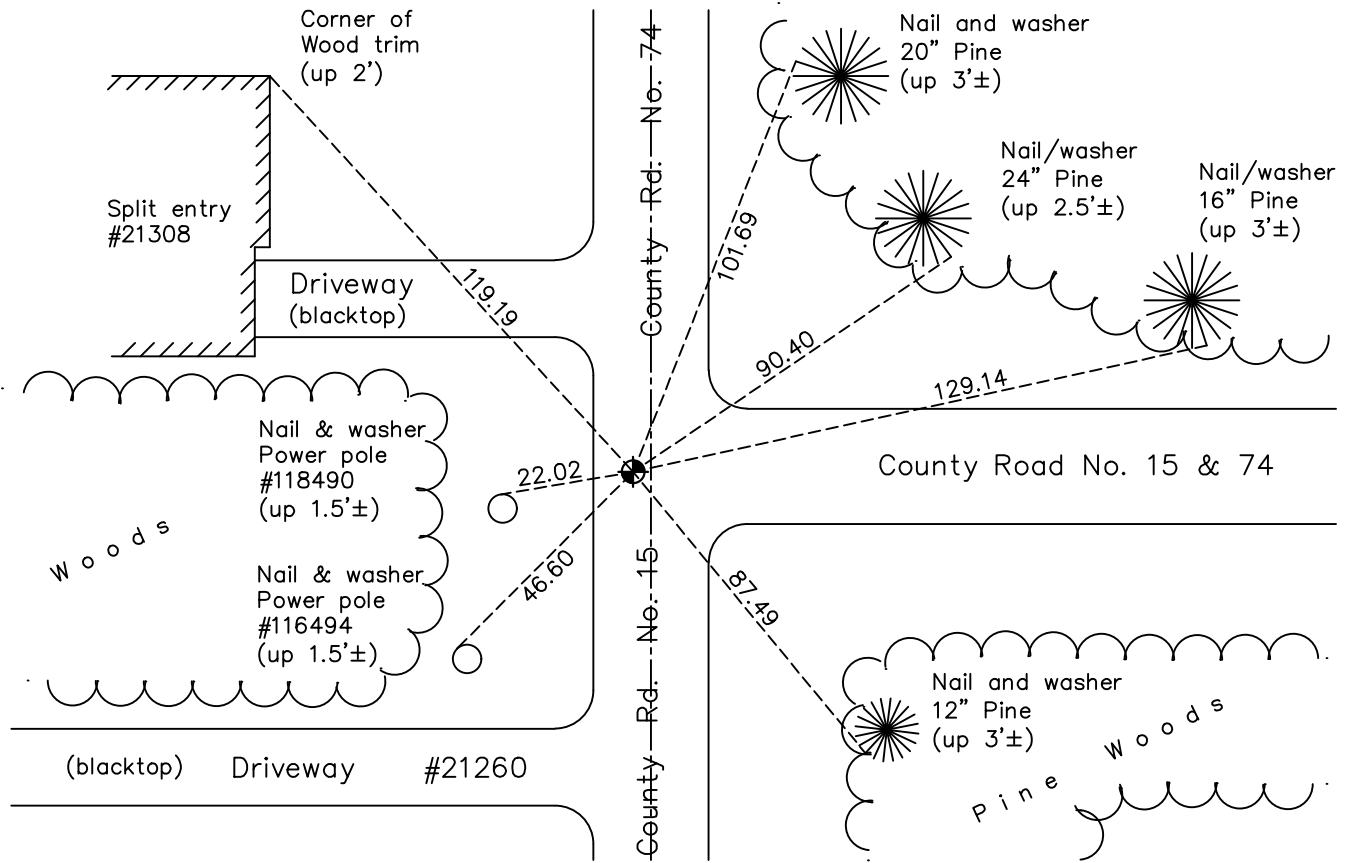
Southeast Corner of Sec. 10 Township 33 Range 23

On the 10th day of August, 1962, the described corner was evidenced by a sandstone monument

and to perpetuate the location of said corner, at the exact location thereof, a permanent marker was placed consisting of a cast iron monument

AND on the 26th day of October, 2021, said permanent marker was found flush and the ties were updated

Updated reference ties are as shown below.



N.A.D. 1983 Coordinates
(1996 Adjustment)

County Project Coordinates	
Northing	<u>216901.4403</u>
Easting	<u>520939.2266</u>
Date	<u>4/05/02</u>

Revision Date
1/10/2022

I hereby certify that this United States public land survey monument record is correct and complete to the best of my knowledge and belief.
David Zieglmeier Date 1/19/23
 David Zieglmeier Anoka County Surveyor
 Minnesota License Number 46179

HISTORY OF GOVERNMENT CORNER

Page No. 38

County of Anoka

State of Minnesota

Southeast Corner of Sec. 10 Township 33 Range 23

CORNER HISTORY:

August 10, 1962 - Found 6" x 10" sandstone monument down 3' using county highway department ties, Set cast iron monument flush and updated ties.

September 22, 1964 - Found cast iron monument and updated ties.

June 16, 1970 - Found cast iron monument broken. Replaced broken monument with a cast iron monument flush and updated ties.

July 31, 1974 - Found cast iron monument and updated ties.

June 29, 1977 - Found cast iron monument and updated ties.

June 9, 1981 - Found cast iron monument and updated ties.

June 13, 1984 - Found cast iron monument and updated ties.

June 17, 1988 - Replaced cast iron monument flush after road construction and updated ties.

August 4, 1992 - Found cast iron monument and updated ties.

August 11, 1997 - Found cast iron monument and updated ties.

August 1, 2000 - Found cast iron monument and updated ties.

April 5, 2002 - Established NAD 1983 (1996 adj.) Anoka County project coordinates by static GPS methods.

April 12, 2012 - Found cast iron monument. Verified position by VRS GPS methods. Updated ties.

May 14, 2013 - Found cast iron monument. Verified position by VRS GPS methods. Updated ties. Painted up monument as a precaution due to nearby road construction.

May 10, 2017 - Set construction ties, verified position by VRS GPS methods and updated corner ties prior to road construction.

May 11, 2017 - Removed cast iron monument prior to road construction.

June 29, 2017 - Set cast iron monument using static GPS methods and corner ties after road construction. Verified position by VRS GPS methods and updated ties.

April 18, 2018 - Found cast iron monument flush. Verified position by VRS GPS methods. Updated ties.

October 26, 2021 - Found cast iron monument flush. Verified position by VRS GPS methods. Updated ties.