

CERTIFICATE OF LOCATION OF GOVERNMENT CORNER

County of Anoka

State of Minnesota

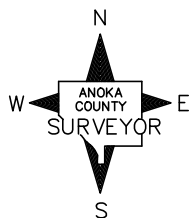
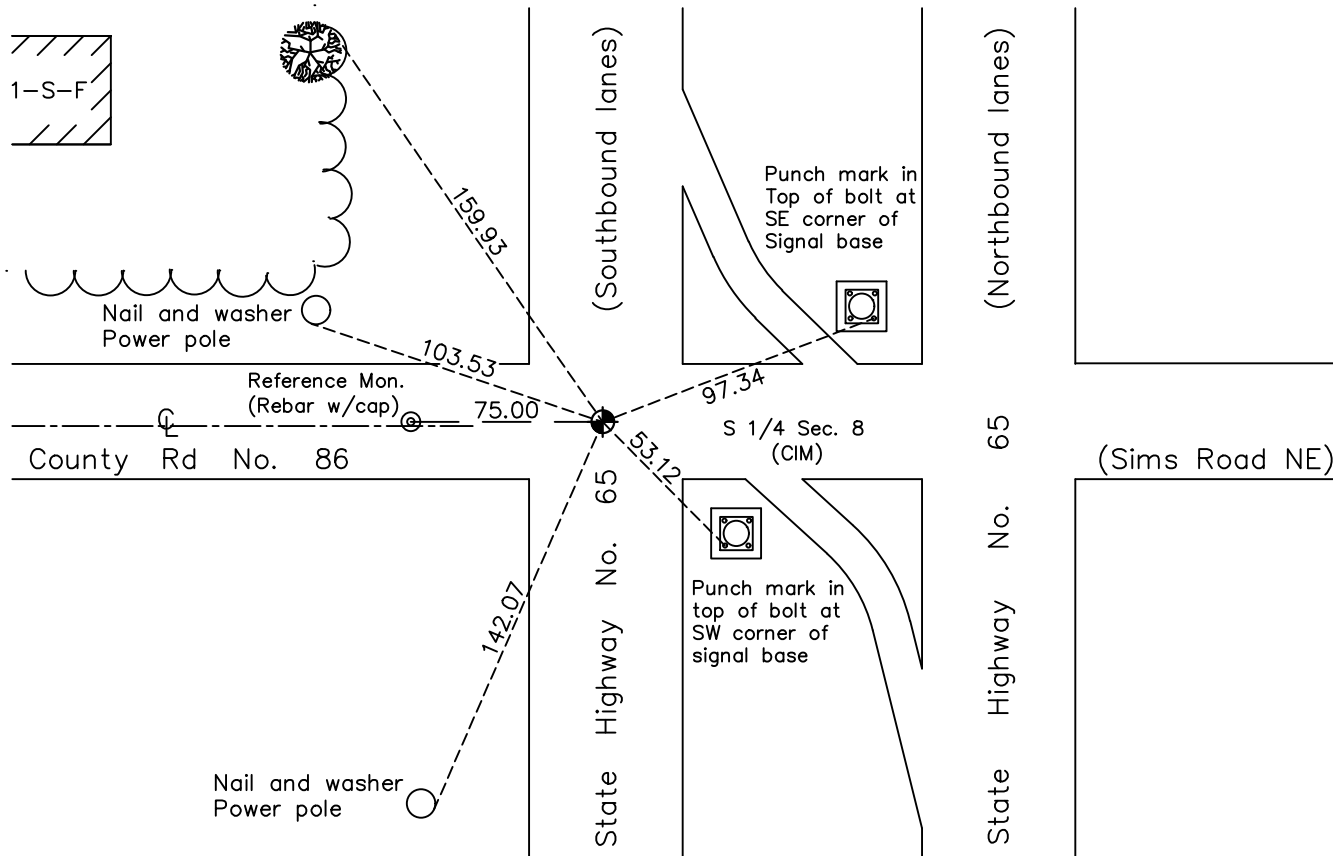
South 1/4 Corner of Sec. 8 Township 33 Range 23

On the 23rd day of February, 1962, the described corner was evidenced by a 3/4" iron pipe

and to perpetuate the location of said corner, at the exact location thereof, a permanent marker was placed consisting of a cast iron monument

AND on the 8th day of June, 2023, said permanent marker was found cast iron monument flush w/ surface. A reference monument (index #1620) was set 75' Westerly

Updated reference ties are as shown below.



N.A.D. 1983 Coordinates
(1996 Adjustment)

County Project Coordinates	
Northing	<u>216965.8026</u>
Easting	<u>507649.6899</u>
Date	<u>9/11/06</u>

I hereby certify that this United States public land survey monument record is correct and complete to the best of my knowledge and belief.

David Zieglmeier Date 12/11/23

David Zieglmeier Anoka County Surveyor
Minnesota License Number 46179

Revision Date

7/26/2023

REFERENCE MONUMENT FOR GOVERNMENT CORNER

Reference to County of Anoka State of Minnesota

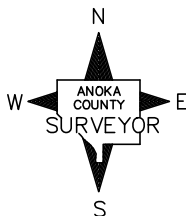
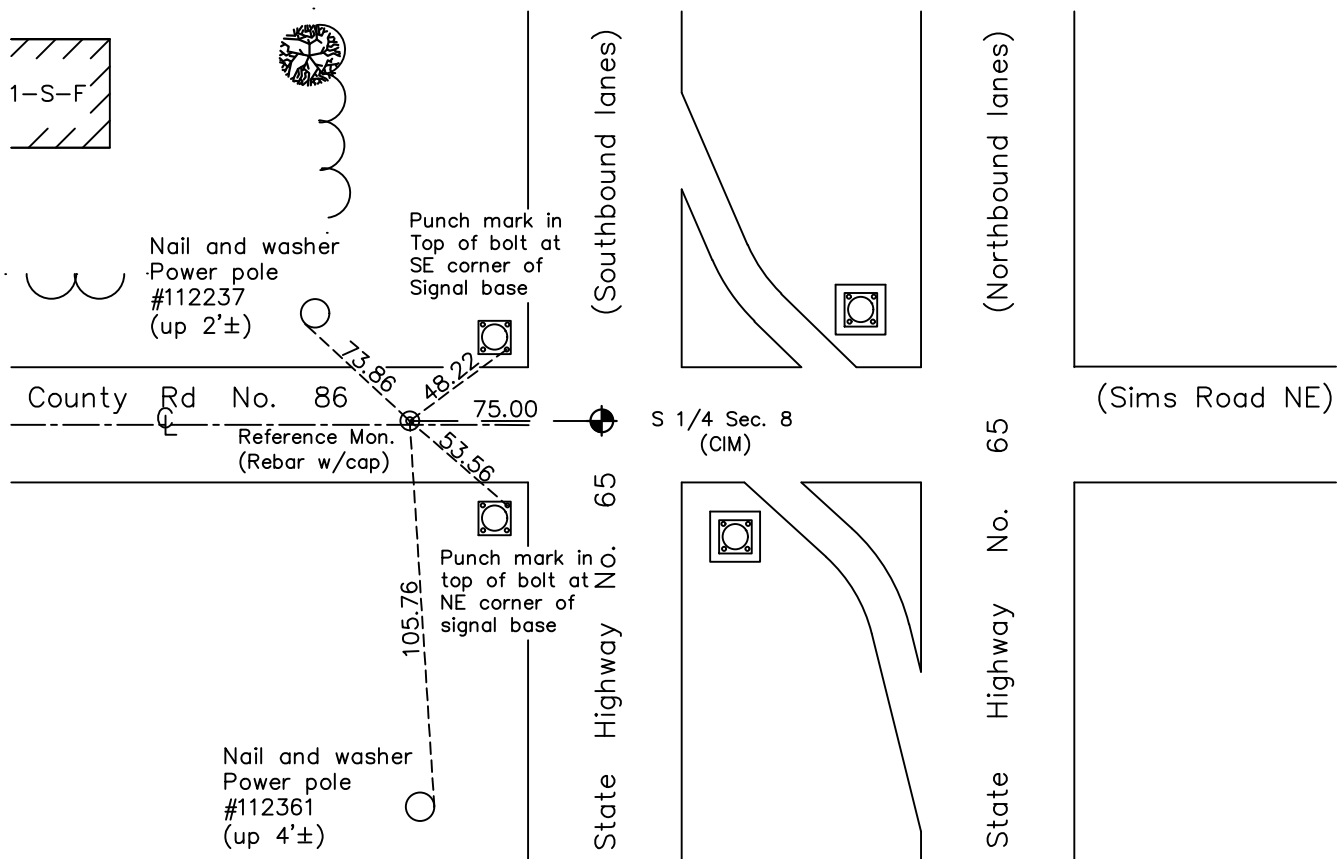
South 1/4 Corner of Sec. 8 Township 33 Range 23

On the 8th day of June, 2023, the described reference monument was evidenced by a computed position 75' easterly along the section line

and to reference the location of said corner, at the exact location thereof, a permanent marker was placed consisting of A 1/2" x 2' rebar with Anoka County aluminum cap and punch mark

AND on the 8th day of June, 2023, said permanent marker was set flush using RTK GPS method and ties were established to the reference monument

Updated reference ties are as shown below.



REFERENCE MONUMENT

N.A.D. 1983 (2011 Adj.)

Revision Date
7/26/2023

County Project Coordinates	
Northing	<u>216967.1001</u>
Easting	<u>507574.7011</u>
Date	<u>6/8/2023</u>

HISTORY OF GOVERNMENT CORNER

Page No. 43

County of Anoka

State of Minnesota

South 1/4 Corner of Sec. 8 Township 33 Range 23

CORNER HISTORY:

February 21, 1962 - Found 3/4" iron pipe down 0.2' using N.C. Hoium ties and established ties to the iron pipe.

April 11, 1963 - Found 3/4" iron pipe down 0.2' and set construction ties prior to road construction.

September 3, 1969 - Found iron pipe missing, set cast iron monument flush using construction ties from 1963 and updated ties.

June 30, 1977 - Found cast iron monument and updated ties.

July 20, 1980 - Found cast iron monument and updated ties.

July 20, 1981 - Found cast iron monument and updated ties.

June 22, 1984 - Found cast iron monument and updated ties.

June 11, 1987 - Found cast iron monument and updated ties.

October 24, 1990 - Found cast iron monument under the blacktop and updated ties.

September 11, 2006 - Found cast iron monument, established NAD 1983 (1996 adj.) Anoka County project coordinates by static GPS methods, raised flush and updated ties.

June 8, 2023 - Found cast iron monument flush with road surface. Set a **reference monument** to a computed position 75' westerly along the section line using RTK GPS method consisting of a 1/2" x 2' long rebar with Anoka County aluminum cap and punch mark flush with surface. Established ties to **reference monument**.