

# CERTIFICATE OF LOCATION OF GOVERNMENT CORNER

County of Anoka

State of Minnesota

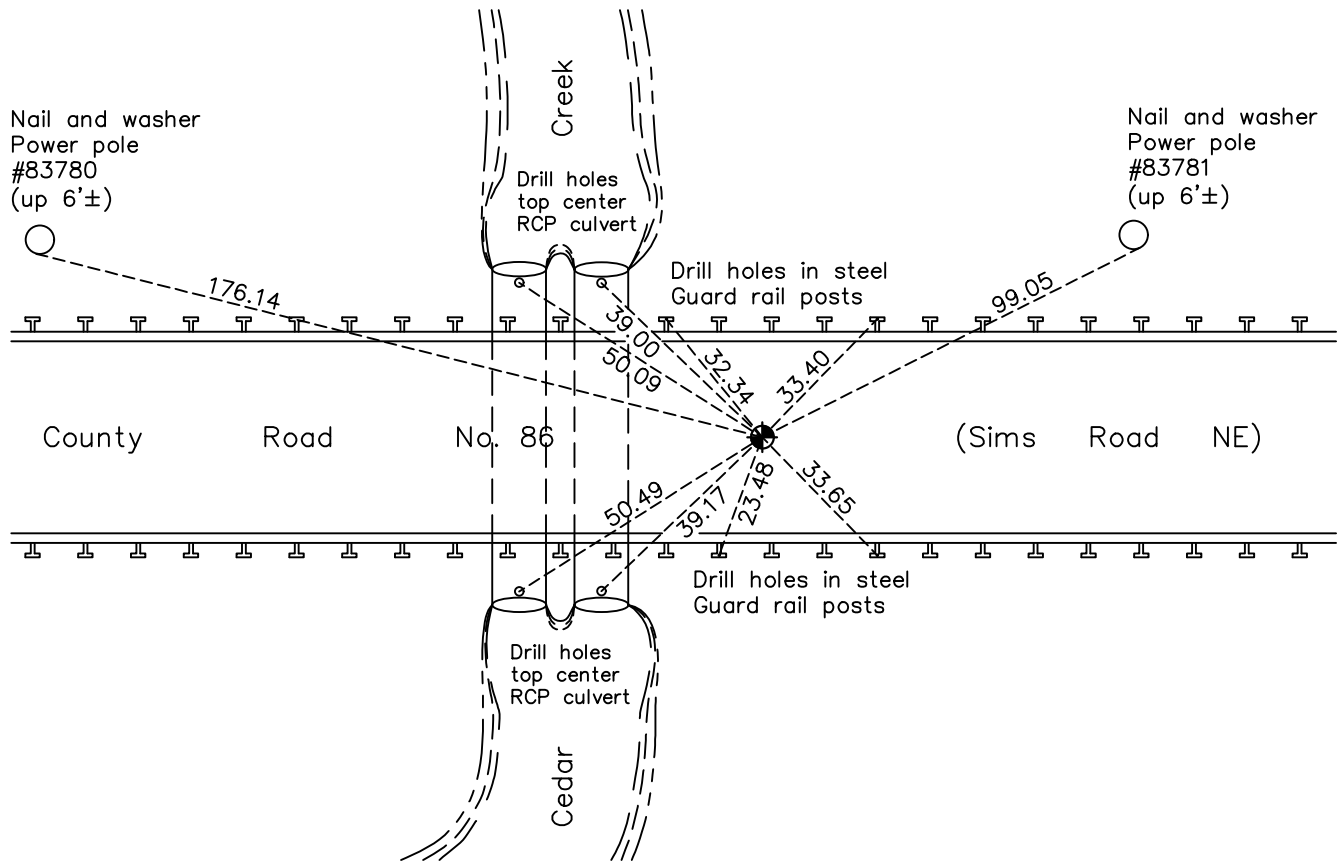
## North $\frac{1}{4}$ Corner of Sec. 18 Township 33 Range 23

On the 3rd day of August, 1983, the described corner was evidenced by area resurvey

and to perpetuate the location of said corner, at the exact location thereof, a permanent marker was placed consisting of a cast iron monument September 22, 1983

AND on the 8th day of October, 2021, said permanent marker was found flush on the centerline and the ties were updated

Updated reference ties are as shown below.



Revision Date  
1/10/2022

N.A.D. 1983 Coordinates  
(1996 Adjustment)

County Project Coordinates	
Northing	<u>216991.7943</u>
Easting	<u>502400.8248</u>
Date	<u>4/05/02</u>

I hereby certify that this United States public land survey monument record is correct and complete to the best of my knowledge and belief.

*David Zieglmeier* Date 1/20/23

David Zieglmeier Anoka County Surveyor  
Minnesota License Number 46179

# HISTORY OF GOVERNMENT CORNER

Page No. 45

County of Anoka

State of Minnesota

## North 1/4 Corner of Sec. 18 Township 33 Range 23

### **CORNER HISTORY:**

December 17, 1979 - Found corner location falls in creek south of old bridge. Set construction ties prior to road and new bridge construction.

August 3, 1983 - Set 1/2" iron pipe using area resurvey and established ties to iron pipe after road construction.

September 22, 1983 - Replaced 1/2" iron pipe with cast iron monument and updated ties.

June 14, 1984 - Found cast iron monument and updated ties.

June 8, 1987 - Found cast iron monument and updated ties.

August 6, 1992 - Found cast iron monument and updated ties.

August 12, 1997 - Found cast iron monument and updated ties.

May 16, 2000 - Found cast iron monument and updated ties.

April 5, 2002 - Established NAD 1983 (1996 adj.) Anoka County project coordinates by static GPS methods.

April 29, 2010 - Found cast iron monument, set construction ties and updated corner ties prior to road construction. Removed cast iron monument.

August 4, 2010 - Set temporary P.K. nail using construction ties. Checked against corner ties and static GPS.

August 2010 - Replaced P.K. nail with cast iron monument and updated ties.

January 25, 2013 - Found cast iron monument and updated ties.

April 20, 2018 - Found cast iron monument flush. Verified position by VRS GPS methods. Updated ties.

October 8, 2021 - Found cast iron monument flush. Verified position by VRS GPS methods. Updated ties.