

# CERTIFICATE OF LOCATION OF GOVERNMENT CORNER

County of Anoka

State of Minnesota

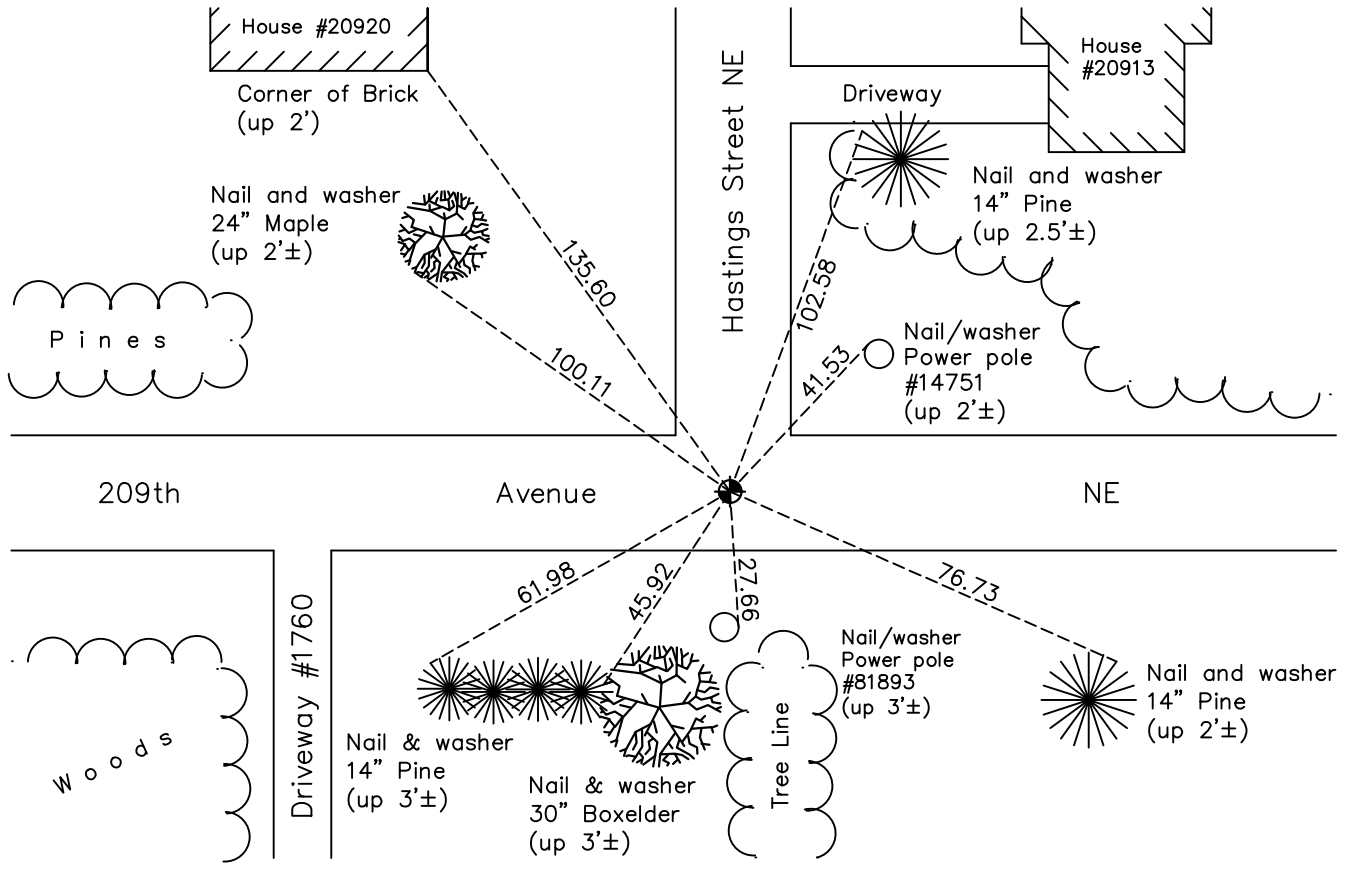
## East 1/4 Corner of Sec. 17 Township 33 Range 23

On the 11th day of September, 1962, the described corner was evidenced by a 3/4" iron pipe

and to perpetuate the location of said corner, at the exact location thereof, a permanent marker was placed consisting of a cast iron monument

AND on the 20th day of October, 2021, said permanent marker was found flush and the ties were updated

Updated reference ties are as shown below.



Revision Date  
 1/10/2022

N.A.D. 1983 Coordinates  
 (1996 Adjustment)

County Project Coordinates	
Northing	<u>214268.0753</u>
Easting	<u>510277.7400</u>
Date	<u>5/20/02</u>

I hereby certify that this United States public land survey monument record is correct and complete to the best of my knowledge and belief.  
*David Zieglmeier* Date 1/20/23  
 David Zieglmeier Anoka County Surveyor  
 Minnesota License Number 46179

# HISTORY OF GOVERNMENT CORNER

Page No. 49

County of Anoka

State of Minnesota

East 1/4 Corner of Sec. 17 Township 33 Range 23

## **CORNER HISTORY:**

September 11, 1962 - Found 3/4" iron pipe and replaced with a cast iron monument. Established ties to monument.

July 6, 1970 - Found cast iron monument up 0.1'± and updated ties.

August 16, 1974 - Found cast iron monument broken, replaced with a cast iron monument using corner ties and updated the ties.

Unknown Date - Found cast iron monument down 2'± and raised flush with blacktop road.

June 11, 1981 - Found cast iron monument and updated ties.

June 15, 1984 - Found cast iron monument and updated ties.

August 7, 1992 - Found cast iron monument and updated ties.

July 31, 1997 - Found cast iron monument and updated ties.

May 20, 2002 - Established NAD 1983 (1996 adj.) Anoka County project coordinates by static GPS methods.

February 6, 2013 - Found cast iron monument down 0.4'± and raised. Updated ties.

April 25, 2013 - Found cast iron monument and updated ties.

April 27, 2018 - Found cast iron monument flush. Verified position by VRS GPS methods. Updated ties.

October 20, 2021 - Found cast iron monument flush. Verified position by VRS GPS methods. Updated ties.