

CERTIFICATE OF LOCATION OF GOVERNMENT CORNER

County of Anoka

State of Minnesota

Witness Corner of Sec. 15 Township 33 Range 23

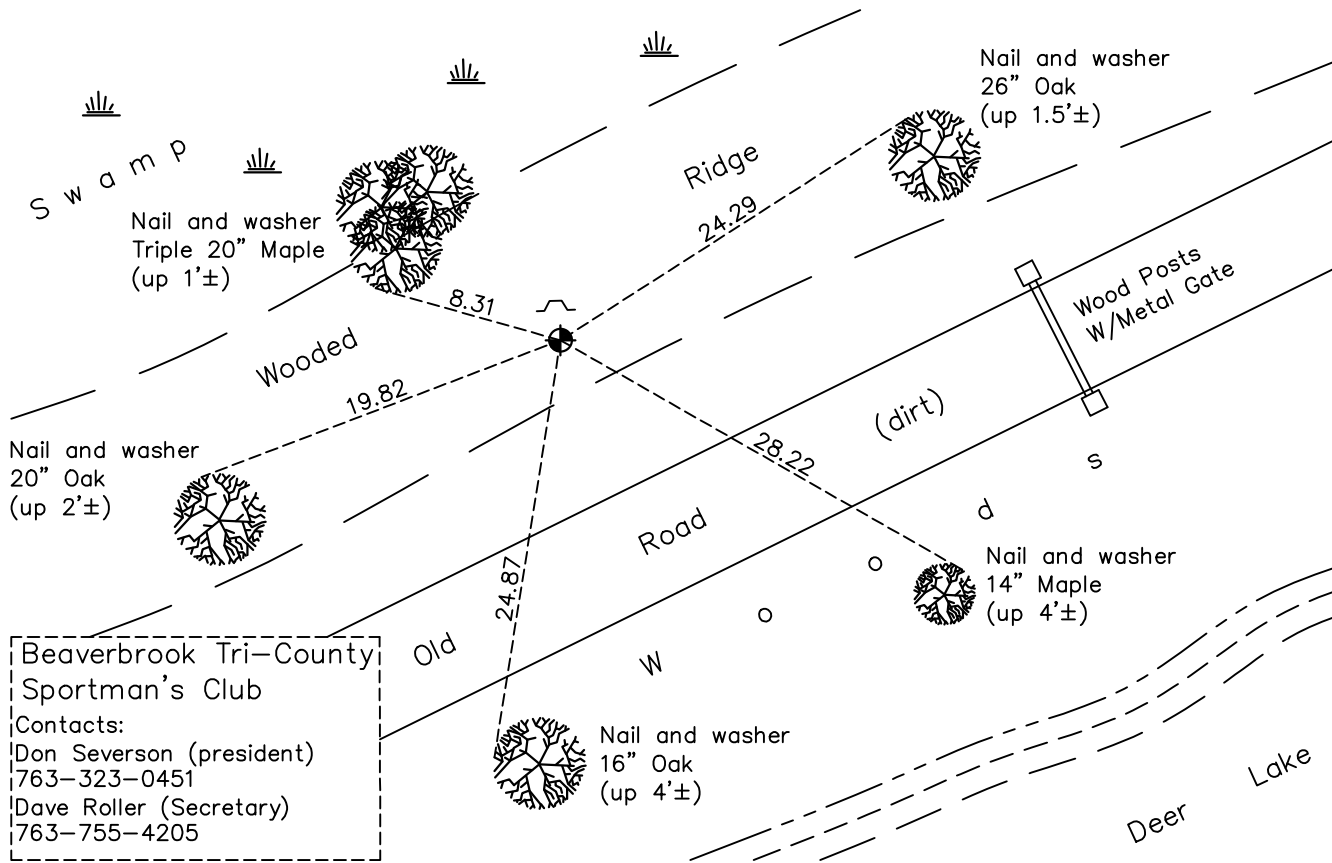
(On west line of section)

On the 18th day of September, 1973, the described corner was evidenced by area resurvey

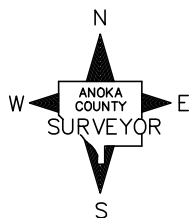
and to perpetuate the location of said corner, at the exact location thereof, a permanent marker was placed consisting of a cast iron monument

AND on the 5th day of June, 2023, said permanent marker was found flush with a sign and post on the north side and the ties were updated

Updated reference ties are as shown below.



Beaverbrook Tri-County Sportman's Club
 Contacts:
 Don Severson (president)
 763-323-0451
 Dave Roller (Secretary)
 763-755-4205



Revision Date
6/05/2023

N.A.D. 1983 Coordinates
 (1996 Adjustment)

County Project Coordinates	
Northing	<u>212896.2207</u>
Easting	<u>515650.1378</u>
Date	<u>3/26/03</u>

I hereby certify that this United States public land survey monument record is correct and complete to the best of my knowledge and belief.
David Zieglmeier Date 6/28/23
 David Zieglmeier Anoka County Surveyor
 Minnesota License Number 46179

HISTORY OF GOVERNMENT CORNER

Page No. 50A

County of Anoka

State of Minnesota

Witness Corner of Sec. 15 Township 33 Range 23
(On west line of section)

CORNER HISTORY:

September 18, 1973 - Set cast iron monument and established ties to monument.

July 24, 1974 - Found cast iron monument and updated ties.

July 1, 1977 - Found cast iron monument and updated ties.

June 17, 1981 - Found cast iron monument and updated ties.

July 6, 1984 - Found cast iron monument and updated ties.

June 5, 1987 - Found cast iron monument and updated ties.

August 20, 1992 - Found cast iron monument and updated ties.

March 26, 2003 - Found cast iron monument and updated ties. Established NAD 1983 (1996 adj.) Anoka County project coordinates by static GPS methods.

April 2, 2013 - Found cast iron monument and updated ties.

May 16, 2019 - Found cast iron monument flush and updated ties.

June 5, 2023 - Found cast iron monument flush, verified position by ACS RTK GPS method and updated ties.