

CERTIFICATE OF LOCATION OF GOVERNMENT CORNER

County of Anoka

State of Minnesota

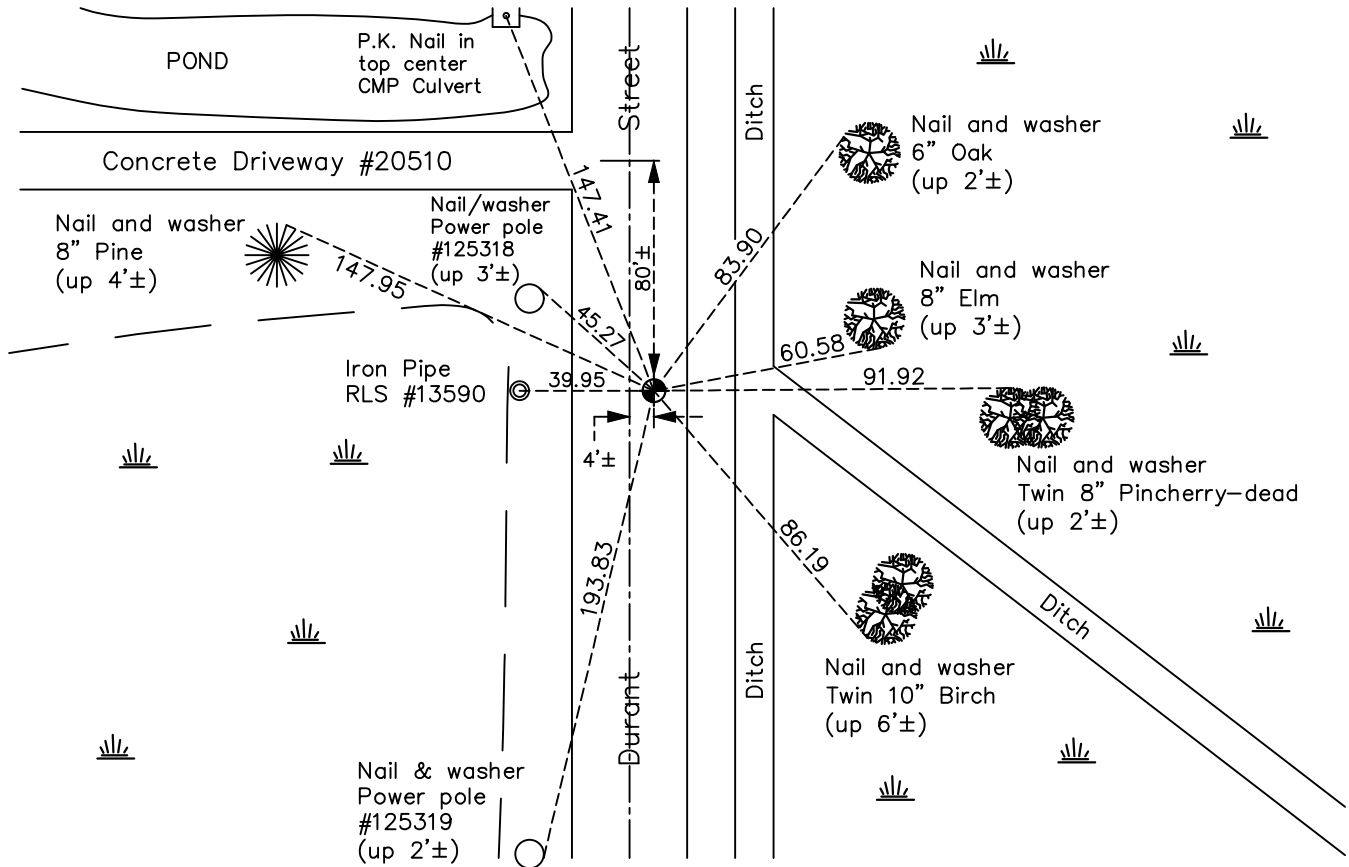
Southeast Corner of Sec. 14 Township 33 Range 23

On the 28th day of October, 1970, the described corner was evidenced by area resurvey

and to perpetuate the location of said corner, at the exact location thereof, a permanent marker was placed consisting of a cast iron monument

AND on the 21st day of June, 2021, said permanent marker was reset CIM flush after road construction using static GPS methods. Updated ties to West. Conditions too wet to east.

Updated reference ties are as shown below.



N.A.D. 1983 Coordinates
(1996 Adjustment)

County Project Coordinates

Northing 211511.3452

Easting 526336.4926

Date 5/22/02

I hereby certify that this United States public land survey monument record is correct and complete to the best of my knowledge and belief.

David Zieglmeier Date 1/20/23

David Zieglmeier Anoka County Surveyor

Minnesota License Number 46179

Revision Date

1/10/2022

HISTORY OF GOVERNMENT CORNER

Page No. 56

County of Anoka

State of Minnesota

Southeast Corner of Sec. 14 Township 33 Range 23

CORNER HISTORY:

October 28, 1970 - Set cast iron monument down 0.5'± using area resurvey and established ties to monument.

July 30, 1974 - Found cast iron monument and updated ties.

July 5, 1977 - Found cast iron monument and updated ties.

June 11, 1981 - Found cast iron monument and updated ties.

June 13, 1984 - Found cast iron monument and updated ties.

October 10, 1985 - Reset cast iron monument after construction using pre-construction survey. Updated ties.

August 18, 1986 - Found cast iron monument and updated ties.

August 10, 1992 - Found cast iron monument and updated ties.

May 12, 1997 - Found cast iron monument and raised. Updated ties.

May 22, 2002 - Found cast iron monument and updated ties. Established NAD 1983 (1996 adj.) Anoka County project coordinates by static GPS methods.

April 20, 2004 - Found cast iron monument, set construction ties, updated corner ties and removed monument prior to road construction.

December 28, 2012 - Found cast iron monument. Verified position by VRS GPS methods. Updated ties.

May 4, 2018 - Found cast iron monument, verified position by VRS GPS methods and updated the ties west of Durant street prior to road construction. Conditions too wet to verify ties east of Durant street.

June 21, 2021 - Reset cast iron monument flush after road construction using static GPS methods. Verified position by VRS GPS methods. Updated ties west of Durant Street. Conditions to east of Durant street too wet.