

CERTIFICATE OF LOCATION OF GOVERNMENT CORNER

County of Anoka

State of Minnesota

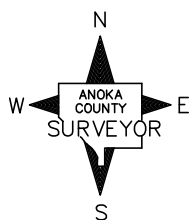
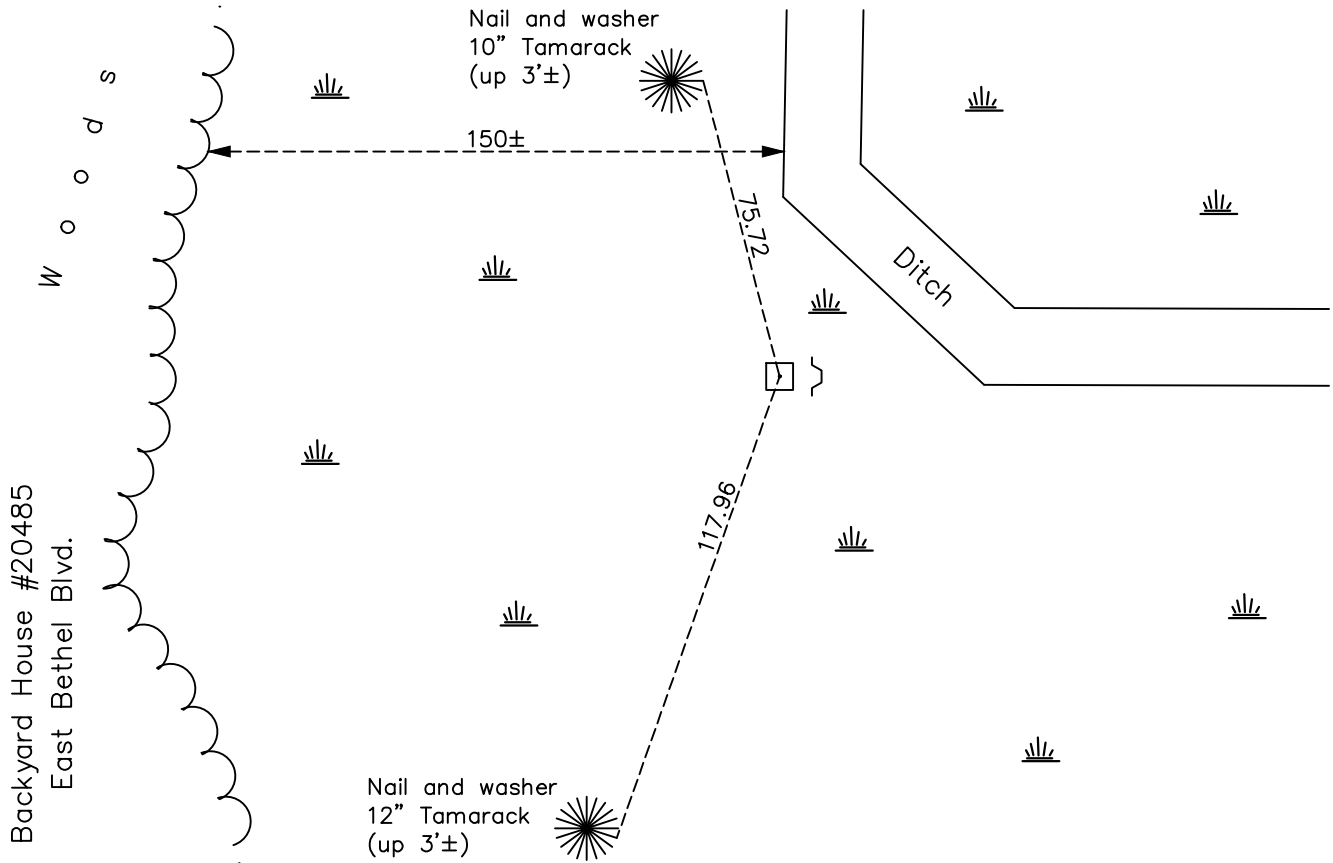
Northwest Corner of Sec. 23 Township 33 Range 23

On the 20th day of September, 1960, the described corner was evidenced by a granite monument

and to perpetuate the location of said corner, at the exact location thereof, a permanent marker was placed consisting of the same granite monument with a sign and post on the east side

AND on the 3rd day of March, 2022, said permanent marker was found down 0.3'± and the ties were updated

Updated reference ties are as shown below.



Revision Date
3/30/2022

N.A.D. 1983 Coordinates
 (1996 Adjustment)

County Project Coordinates	
Northing	<u>211591.6277</u>
Easting	<u>520952.1771</u>
Date	<u>3/24/03</u>

I hereby certify that this United States public land survey monument record is correct and complete to the best of my knowledge and belief.

David Zieglmeier Date 1/20/23

David M Zieglmeier, Anoka County Surveyor
 Minnesota License Number 46179

HISTORY OF GOVERNMENT CORNER

Page No. 59

County of Anoka

State of Minnesota

Northwest Corner of Sec. 23 Township 33 Range 23

CORNER HISTORY:

November 1960 - Found granite monument on its side. Reset granite monument, added an iron pipe on the north side.

September 20, 1961 - Found granite monument up 1' with a 1" solid iron bar on north side and established ties to the monument.

July 3, 1970 - Found granite monument leaning E.N.E. and loose. updated ties.

February 21, 1978 - Monument not found and all ties were gone.

December 3, 1981 - Found granite monument up 0.5' and leaning, straightened using one remaining tie. updated ties.

November 19, 1987 - Found granite monument and updated ties.

March 24, 2003 - Established NAD 1983 (1996 adj.) Anoka County project coordinates by static GPS methods.

January 28, 2013 - Found granite monument and updated ties.

March 3, 2022 - Found granite monument and verified position by VRS GPS method. Updated ties.