

# CERTIFICATE OF LOCATION OF GOVERNMENT CORNER

County of Anoka

State of Minnesota

## Witness Corner of Sec. 14 Township 33 Range 23

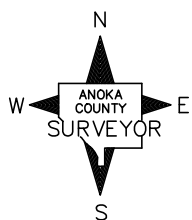
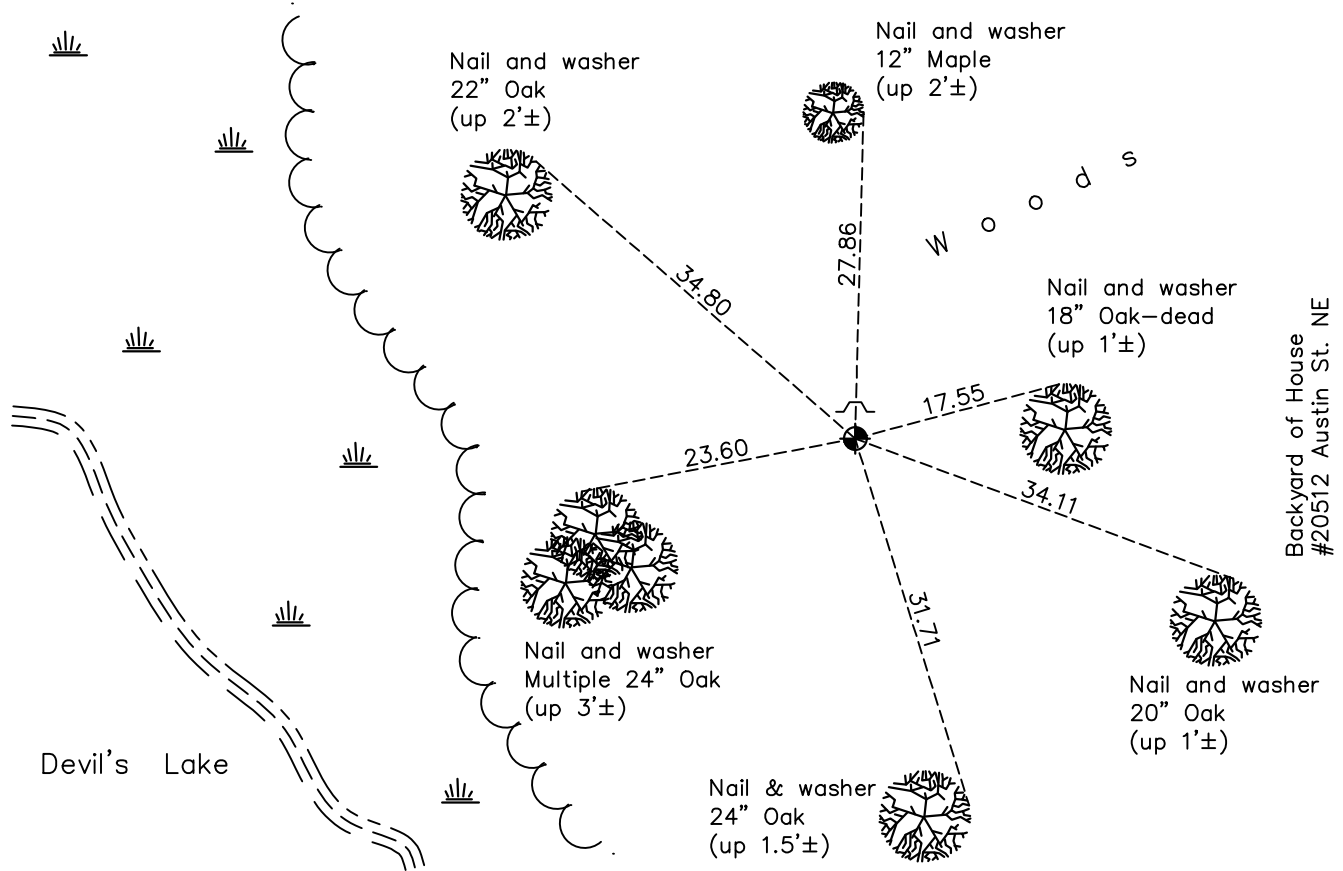
(On south line of section)

On the 10th day of April, 1989, the described corner was evidenced by area resurvey

and to perpetuate the location of said corner, at the exact location thereof, a permanent marker was placed consisting of a cast iron monument with a sign and post on the north side

AND on the 18th day of October, 2021, said permanent marker was found up 0.1'± and the ties were updated

Updated reference ties are as shown below.



Revision Date  
**1/10/2022**

N.A.D. 1983 Coordinates  
 (1996 Adjustment)

County Project Coordinates	
Northing	<u>211534.5380</u>
Easting	<u>524783.6716</u>
Date	<u>3/24/03</u>

I hereby certify that this United States public land survey monument record is correct and complete to the best of my knowledge and belief.  
David Zieglmeier Date 1/20/23  
 David Zieglmeier Anoka County Surveyor  
 Minnesota License Number 46179

# HISTORY OF GOVERNMENT CORNER

Page No. 59A

County of Anoka

State of Minnesota

Witness Corner of Sec. 14 Township 33 Range 23  
(On south line of section)

## **CORNER HISTORY:**

April 10, 1989 - Set cast iron monument using area resurvey and established ties to monument.

August 10, 2000 - Found cast iron monument and updated ties.

March 24, 2003 - Established NAD 1983 (1996 adj.) Anoka County project coordinates by static GPS methods.

December 28, 2012 - Found cast iron monument up 0.1'± and updated ties.

May 4, 2018 - Found cast iron monument up 0.1'± and updated ties.

October 18, 2021 - Found cast iron monument up 0.1'± and updated ties.