

CERTIFICATE OF LOCATION OF GOVERNMENT CORNER

County of Anoka

State of Minnesota

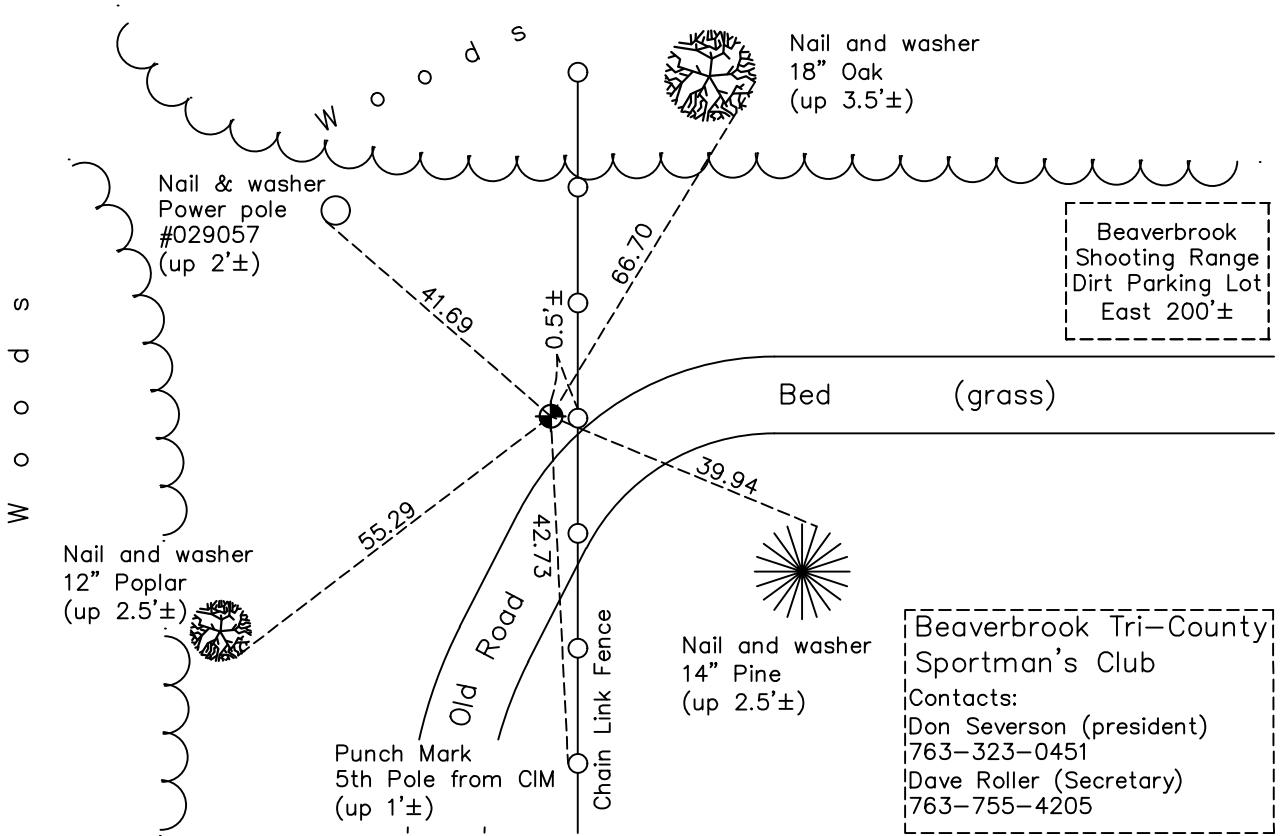
South 1/4 Corner of Sec. 16 Township 33 Range 23

On the 16th day of November, 1970, the described corner was evidenced by a scrap iron pipe with an eye on top

and to perpetuate the location of said corner, at the exact location thereof, a permanent marker was placed consisting of a cast iron monument

AND on the 5th day of June, 2023, said permanent marker was found down 2.2'± and the ties were updated

Updated reference ties are as shown below.



ANOKA COUNTY SURVEYOR

Revision Date

6/1/2019

N.A.D. 1983 Coordinates
(1996 Adjustment)

| County Project Coordinates | |
|----------------------------|--------------------|
| Northing | <u>211611.0094</u> |
| Easting | <u>513019.3688</u> |
| Date | <u>3/26/03</u> |

I hereby certify that this United States public land survey monument record is correct and complete to the best of my knowledge and belief.

David Zieglmeier Date 6/28/23

David Zieglmeier Anoka County Surveyor
Minnesota License Number 46179

HISTORY OF GOVERNMENT CORNER

Page No. 63

County of Anoka

State of Minnesota

South 1/4 Corner of Sec. 16 Township 33 Range 23

CORNER HISTORY:

November 16, 1970 - Found piece of scrap iron with eye in top down 0.5'± and established ties to scrap iron.

August 6, 1974 - Replaced scrap iron with cast iron monument down 1.5'± and updated ties.

July 7, 1977 - Found cast iron monument and updated ties.

June 17, 1981 - Found cast iron monument and updated ties.

June 15, 1984 - Found cast iron monument and updated ties.

June 5, 1987 - Found cast iron monument and updated ties.

March 9, 1992 - Found cast iron monument and updated ties.

March 26, 2003 - Found cast iron monument down 2'± and updated ties. Established NAD 1983 (1996 adj.) Anoka County project coordinates by static GPS methods.

April 24, 2013 - Found cast iron monument down 2'± and updated ties.

May 15, 2019 - Found cast iron monument down 2'±. Verified position by VRS GPS methods. Updated ties.

June 5, 2023 - Found cast iron monument down 2.2'±, verified position by ACS RTK GPS method, updated ties.