

CERTIFICATE OF LOCATION OF GOVERNMENT CORNER

County of Anoka

State of Minnesota

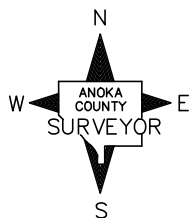
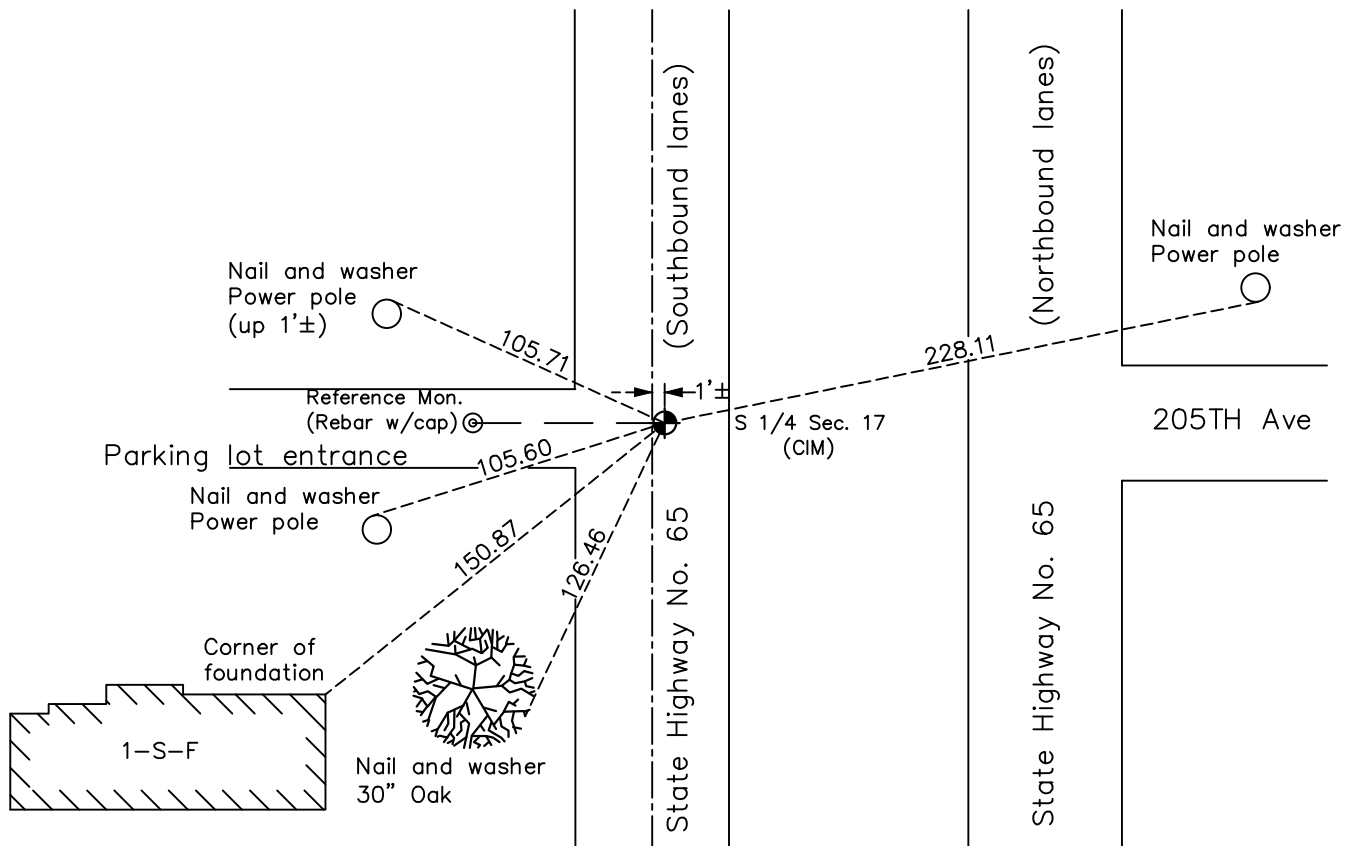
South 1/4 Corner of Sec. 17 Township 33 Range 23

On the 10th day of September, 1962, the described corner was evidenced by a concrete monument

and to perpetuate the location of said corner, at the exact location thereof, a permanent marker was placed consisting of a cast iron monument

AND on the 8th day of June, 2023, said permanent marker was found cast iron monument down 0.1'± under road surface. A reference monument (index #1621) was set 75' Westerly

Updated reference ties are as shown below.



Revision Date
7/26/2023

N.A.D. 1983 Coordinates
 (1996 Adjustment)

| County Project Coordinates | |
|----------------------------|--------------------|
| Northing | <u>211668.9786</u> |
| Easting | <u>507635.9908</u> |
| Date | <u>9/12/06</u> |

I hereby certify that this United States public land survey monument record is correct and complete to the best of my knowledge and belief.

David Zieglmeier Date 12/11/23

David Zieglmeier Anoka County Surveyor
 Minnesota License Number 46179

REFERENCE MONUMENT FOR GOVERNMENT CORNER

Reference to County of Anoka State of Minnesota

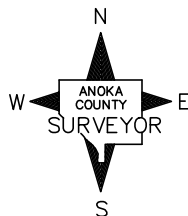
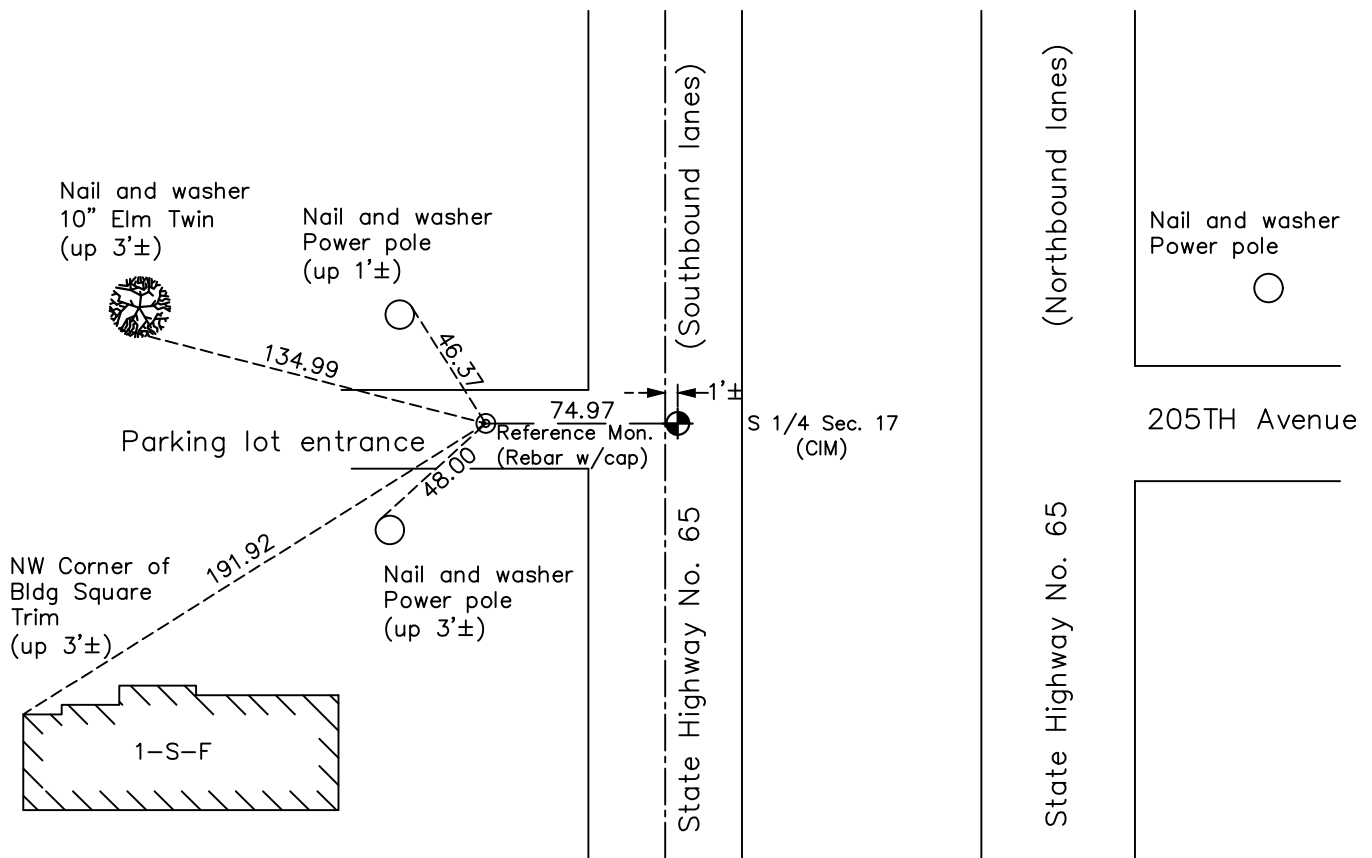
South 1/4 Corner of Sec. 17 Township 33 Range 23

On the 8th day of June, 2023, the described reference monument was evidenced by a computed position 75' easterly along the section line

and to reference the location of said corner, at the exact location thereof, a permanent marker was placed consisting of A 1/2" x 2' rebar with Anoka County aluminum cap and punch mark

AND on the 8th day of June, 2023, said permanent marker was set flush using RTK GPS method and ties were established to the reference monument

Updated reference ties are as shown below.



Revision Date
7/26/2023

REFERENCE MONUMENT
 N.A.D. 1983 (2011 Adj.)

| County Project Coordinates | |
|----------------------------|-------------|
| Northing | 211669.2545 |
| Easting | 507560.9913 |
| Date | 6/8/2023 |

HISTORY OF GOVERNMENT CORNER

Page No. 65

County of Anoka

State of Minnesota

South 1/4 Corner of Sec. 17 Township 33 Range 23

CORNER HISTORY:

June 5, 1944 - Found concrete monument and established ties to monument by Cartwright.

May 15, 1957 - Found railroad spike by M. Hwy. D.

September 29, 1959 - Found railroad spike and updated ties by N.C. Hoium and Associates, inc.

September 10, 1962 - Found concrete monument (top broken off) down 0.5' with iron rod on north side and updated ties.

August 6, 1963 - Found concrete monument, set construction ties and removed concrete monument prior to road construction.

September 3, 1969 - Set cast iron monument flush using construction and corner ties. Updated ties.

August 6, 1974 - Found cast iron monument and updated ties.

July 7, 1977 - Found cast iron monument and updated ties.

July 20, 1981 - Found cast iron monument and updated ties.

June 15, 1984 - Found cast iron monument and updated ties.

October 24, 1990 - Found cast iron monument and updated ties.

September 12, 2006 - Found cast iron monument, raised flush, established NAD 1983 (1996 adj.) Anoka County project coordinates and updated ties.

June 8, 2023 - Found cast iron monument down 0.1'± under road surface. Set **reference monument** to a computed position 75' westerly along the section line using RTK GPS method consisting of a 1/2" x 2' long rebar with an Anoka County aluminum cap and punch mark, set flush with surface. Established ties to **reference monument**.