

CERTIFICATE OF LOCATION OF GOVERNMENT CORNER

County of Anoka

State of Minnesota

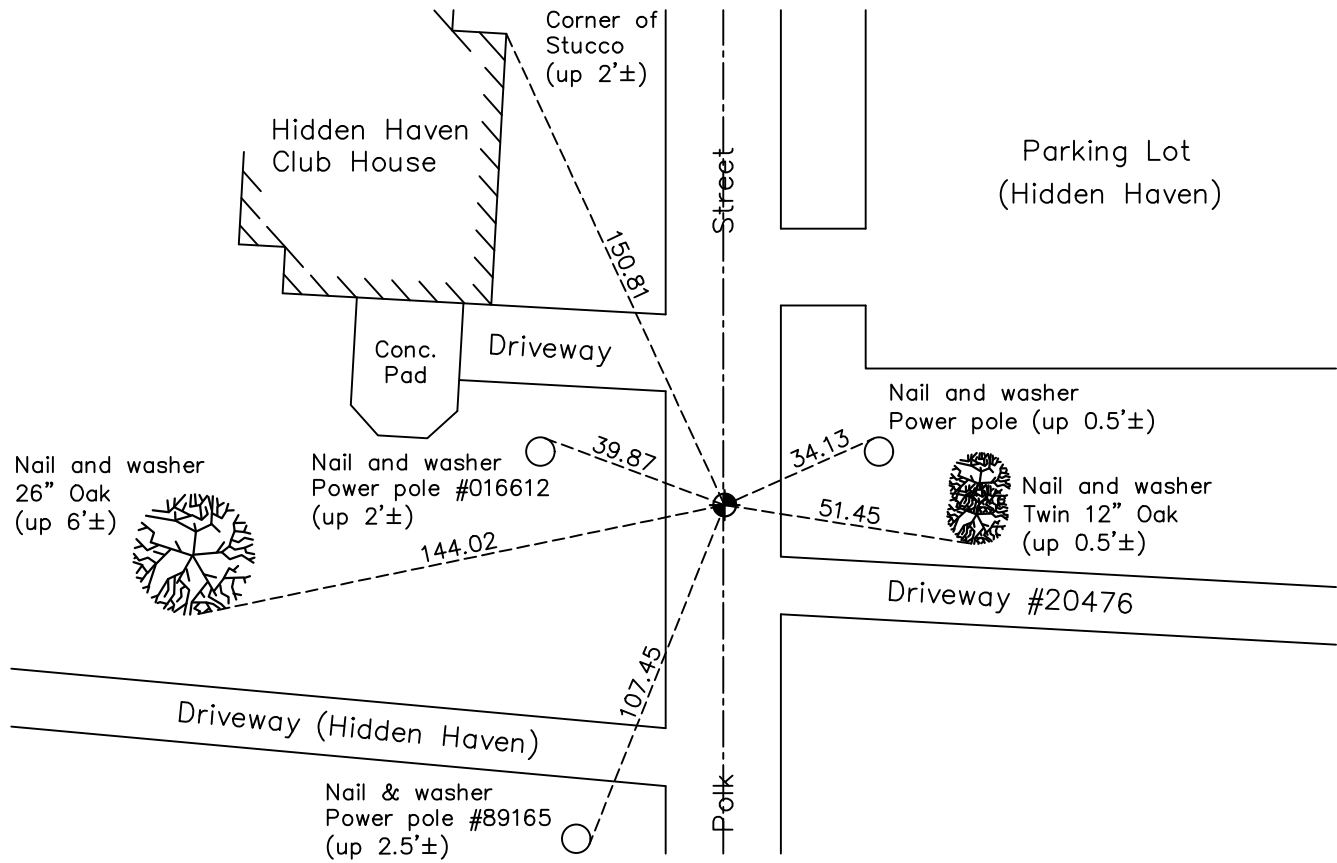
Northwest Corner of Sec. 20 Township 33 Range 23

On the 13th day of February, 1962, the described corner was evidenced by a 1 1/2" broken well point

and to perpetuate the location of said corner, at the exact location thereof, a permanent marker was placed consisting of a cast iron monument

AND on the 22nd day of October, 2021, said permanent marker was found flush and the ties were updated

Updated reference ties are as shown below.



Revision Date
 1/10/2022

N.A.D. 1983 Coordinates
(1996 Adjustment)

County Project Coordinates	
Northing	<u>211678.6202</u>
Easting	<u>505014.8322</u>
Date	<u>4/05/02</u>

I hereby certify that this United States public land survey monument record is correct and complete to the best of my knowledge and belief.

David Zieglmeier Date 2/1/23

David Zieglmeier Anoka County Surveyor
 Minnesota License Number 46179

HISTORY OF GOVERNMENT CORNER

Page No. 66

County of Anoka

State of Minnesota

Northwest Corner of Sec. 20 Township 33 Range 23

CORNER HISTORY:

February 13, 1962 - Found 1-1/2" broken off well point down 0.3'± and established ties to well point.

September 24, 1964 - Found 1-1/2" broken off well point down 1'± and updated ties.

September 17, 1969 - Replaced well point with cast iron monument down 0.5'± and updated ties.

August 5, 1974 - Found cast iron monument and updated ties.

July 7, 1977 - Found cast iron monument and updated ties.

August 11, 1981 - Found cast iron monument and updated ties.

July 19, 1982 - Replaced cast iron monument flush and updated ties.

June 14, 1984 - Found cast iron monument and updated ties.

June 1, 1987 - Found cast iron monument and updated ties.

August 7, 1992 - Found cast iron monument and updated ties.

July 27, 1998 - Found cast iron monument, set construction ties and removed prior to road construction.

August 24, 1998 - Set cast iron monument and updated ties after road construction.

May 16, 2000 - Found cast iron monument and updated ties.

April 5, 2002 - Established NAD 1983 (1996 adj.) Anoka County project coordinates by static GPS methods.

January 2013 - Found cast iron monument. Verified position by VRS GPS methods. Updated ties.

April 23, 2018 - Found cast iron monument. Verified position by VRS GPS methods. Updated ties.

October 22, 2021 - Found cast iron monument. Verified position by VRS GPS methods. Updated ties.