

CERTIFICATE OF LOCATION OF GOVERNMENT CORNER

County of Anoka

State of Minnesota

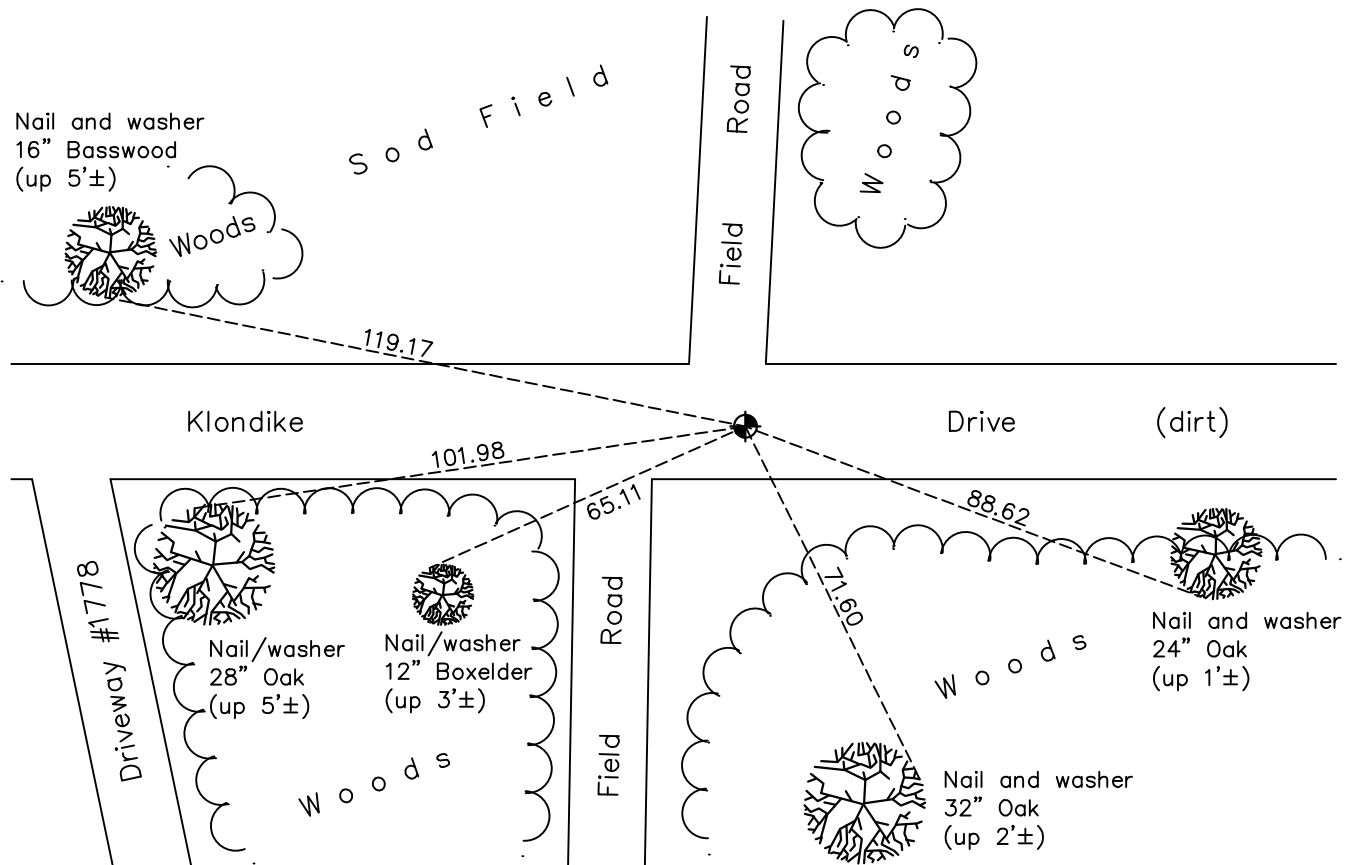
East 1/4 Corner of Sec. 20 Township 33 Range 23

On the 7th day of July, 1967, the described corner was evidenced by a concrete monument

and to perpetuate the location of said corner, at the exact location thereof, a permanent marker was placed consisting of a cast iron monument

AND on the 19th day of October, 2021, said permanent marker was found down 1.5'± and the ties were updated

Updated reference ties are as shown below.



Revision Date

01/10/2022

N.A.D. 1983 Coordinates
(1996 Adjustment)

County Project Coordinates	
Northing	<u>208974.6124</u>
Easting	<u>510312.3527</u>
Date	<u>7/08/02</u>

I hereby certify that this United States public land survey monument record is correct and complete to the best of my knowledge and belief.

David Zieglmeier Date 2/1/23

David Zieglmeier Anoka County Surveyor
Minnesota License Number 46179

HISTORY OF GOVERNMENT CORNER

Page No. 71

County of Anoka

State of Minnesota

East 1/4 Corner of Sec. 20 Township 33 Range 23

CORNER HISTORY:

July 7, 1967 - N.C. Hoiium and Associates found a concrete monument down 1'± and set an iron pipe on north side. Updated ties.

August 21, 1968 - Found concrete monument with 1/2" and 3/4" iron pipes on the north side and updated ties.

July 11, 1977 - Found cast iron monument down 0.2'± (no sign of concrete) and updated ties.

June 11, 1981 - Found cast iron monument and updated ties.

August 15, 1984 - Found cast iron monument and updated ties.

October 24, 1985 - Found cast iron monument down 2'± and updated ties.

August 4, 1992 - Found cast iron monument and updated ties.

July 30, 1997 - Found cast iron monument and updated ties.

June 23, 2000 - Found cast iron monument and updated ties.

July 8, 2002 - Found cast iron monument and updated ties. Established NAD 1983 (1996 adj.) Anoka County project coordinates by static GPS methods.

August 2, 2012 - Found cast iron monument down 1.5'±. Verified position by VRS GPS methods. Updated ties.

May 1, 2018 - Found cast iron monument down 1.5'±. Verified position by VRS GPS methods. Updated ties.

October 19, 2021 - Found cast iron monument down 1.5'±. Verified position by VRS GPS methods. Updated ties.