

# CERTIFICATE OF LOCATION OF GOVERNMENT CORNER

County of Anoka

State of Minnesota

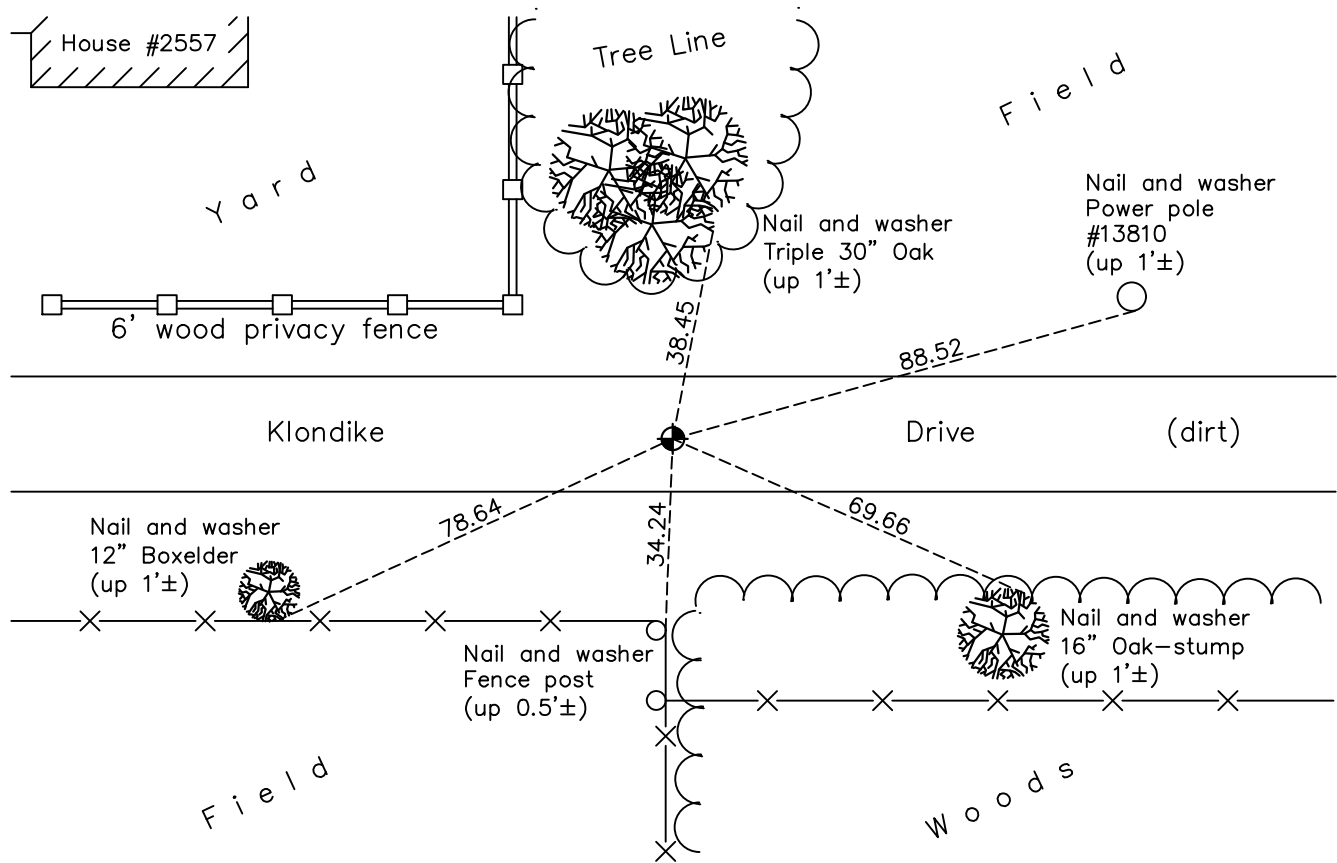
## West 1/4 Corner of Sec. 22 Township 33 Range 23

On the 2nd day of June, 1960, the described corner was evidenced by an old gun barrel

and to perpetuate the location of said corner, at the exact location thereof, a permanent marker was placed consisting of a cast iron monument

AND on the 19th day of October, 2021, said permanent marker was found down 1.5'± and the ties were updated

Updated reference ties are as shown below.



Revision Date

01/10/2022

N.A.D. 1983 Coordinates  
(1996 Adjustment)

County Project Coordinates	
Northing	<u>208965.9365</u>
Easting	<u>515674.6568</u>
Date	<u>7/08/02</u>

I hereby certify that this United States public land survey monument record is correct and complete to the best of my knowledge and belief.

*David Zieglmeier* Date 2/1/23

David Zieglmeier Anoka County Surveyor  
Minnesota License Number 46179

# HISTORY OF GOVERNMENT CORNER

Page No. 72

County of Anoka

State of Minnesota

West 1/4 Corner of Sec. 22 Township 33 Range 23

## **CORNER HISTORY:**

June 2, 1960 - Found and replaced old gun barrel with cast iron monument and established ties to monument.

July 3, 1970 - Found cast iron monument down 0.3'± and updated ties.

August 7, 1974 - Found cast iron monument broken and down 0.54'. Replcaed with a new cast iron monument and updated ties.

July 12, 1977 - Found cast iron monument and updated ties.

June 11, 1981 - Found cast iron monument and updated ties.

June 18, 1984 - Found cast iron monument and updated ties.

June 5, 1987 - Found cast iron monument and updated ties.

August 4, 1992 - Found cast iron monument and updated ties.

July 30, 1997 - Found cast iron monument and updated ties.

June 26, 2000 - Found cast iron monument down 1.5'± and updated ties.

July 8, 2002 - Established NAD 1983 (1996 adj.) Anoka County project coordinates by static GPS methods.

April 24, 2013 - Found cast iron monument down 2'± and updated ties.

May 1, 2018 - Found cast iron monument down 2'±. Verified position by VRS GPS methods. Updated ties.

October 19, 2021 - Found cast iron monument down 1.5'±. Verified position by VRS GPS methods. Updated ties.