

CERTIFICATE OF LOCATION OF GOVERNMENT CORNER

County of Anoka

State of Minnesota

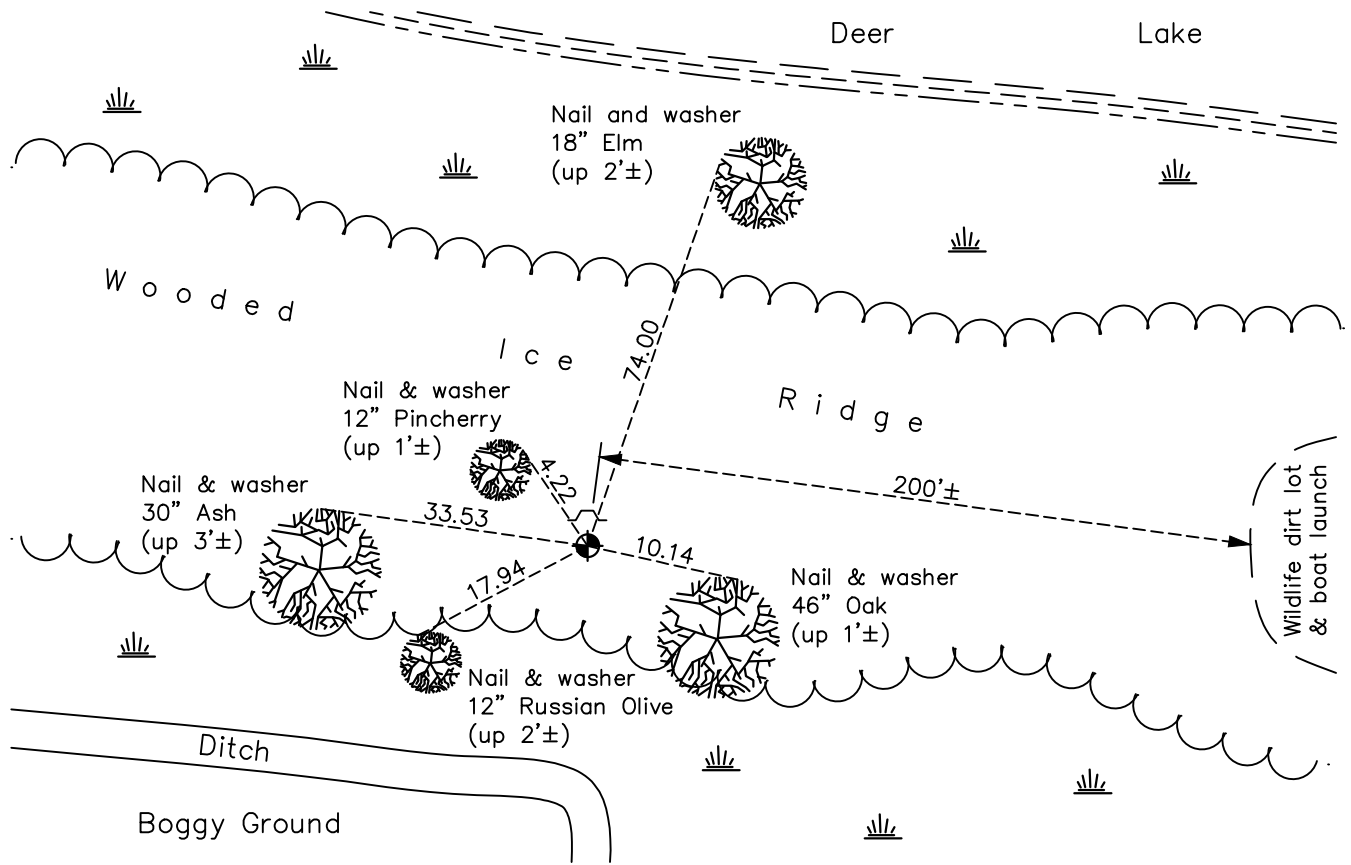
Witness Corner of Sec. 21 Township 33 Range 23
 (on east line of NE 1/4)

On the 1st day of November, 1985, the described corner was evidenced by area resurvey

and to perpetuate the location of said corner, at the exact location thereof, a permanent marker was placed consisting of a cast iron monument with a sign and post on the north side

AND on the 20th day of October, 2021, said permanent marker was found flush and the ties were updated

Updated reference ties are as shown below.



Revision Date
01/10/2022

N.A.D. 1983 Coordinates
 (1996 Adjustment)

| County Project Coordinates | |
|----------------------------|--------------------|
| Northing | <u>210490.3283</u> |
| Easting | <u>515653.7700</u> |
| Date | <u>3/18/03</u> |

I hereby certify that this United States public land survey monument record is correct and complete to the best of my knowledge and belief.

David Zieglmeier Date 2/1/23

David Zieglmeier Anoka County Surveyor
 Minnesota License Number 46179

HISTORY OF GOVERNMENT CORNER

Page No. 72A

County of Anoka

State of Minnesota

Witness Corner of Sec. 21 Township 33 Range 23
(on east line of NE 1/4)

CORNER HISTORY:

November 1, 1985 - Set cast iron monument flush using area resurvey and established ties to monument.

August 21, 1992 - Found cast iron monument and updated ties.

March 18, 2003 - Established NAD 1983 (1996 adj.) Anoka County project coordinates by static GPS methods.

April 2, 2013 - Found cast iron monument and updated ties.

May 17, 2019 - Found cast iron monument flush and updated ties.

October 20, 2021 - Found cast iron monument flush, verified position by VRS GPS methods and updated ties.