

# CERTIFICATE OF LOCATION OF GOVERNMENT CORNER

County of Anoka

State of Minnesota

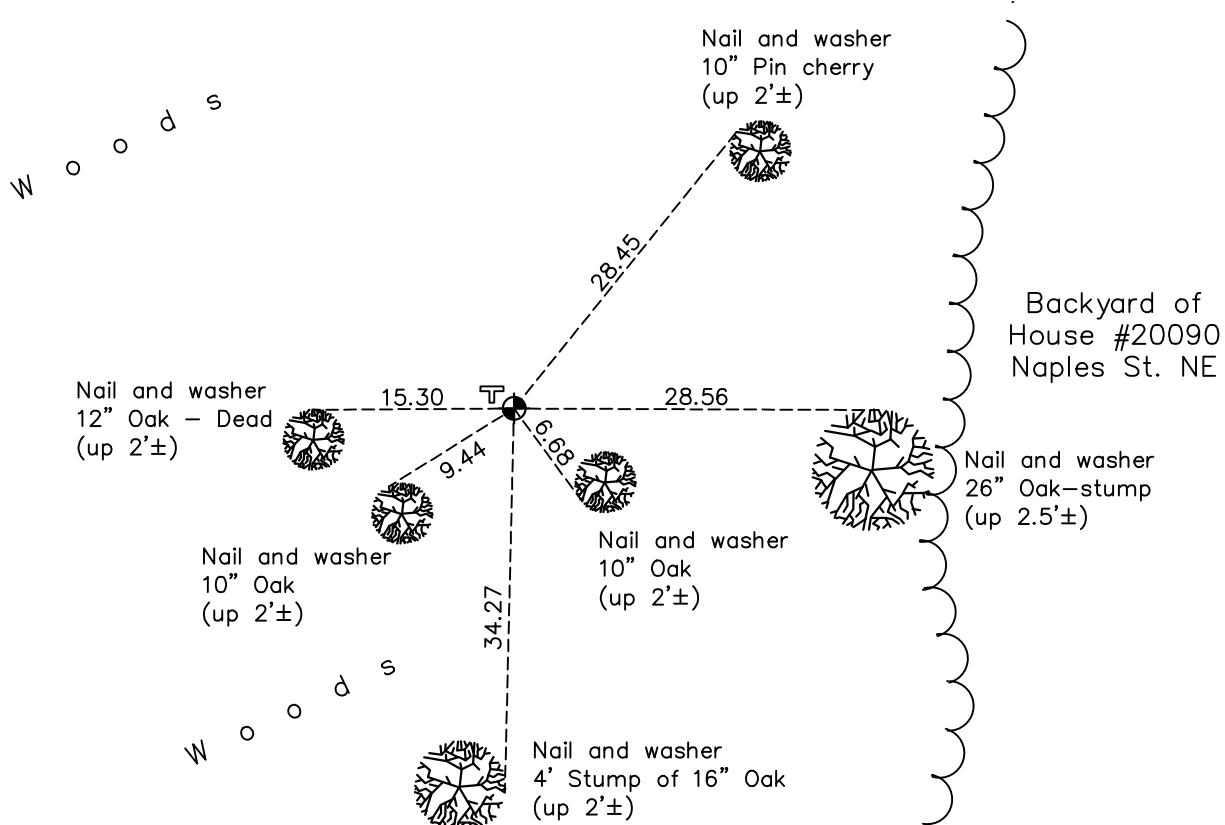
## East 1/4 Corner of Sec. 22 Township 33 Range 23

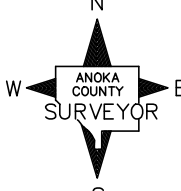
On the 31st day of October, 1963, the described corner was evidenced by a cast iron monument set by N.C. Hoium

and to perpetuate the location of said corner, at the exact location thereof, a permanent marker was placed consisting of the same cast iron monument (with a "T" post to the N.W.)

AND on the 6th day of June, 2023, said permanent marker was found down 0.3'±, the ties were updated and verified to historical record of the corner

Updated reference ties are as shown below.



N  
 W  E  
 S

Revision Date  
 6/20/2023

N.A.D. 1983 Coordinates  
 (1996 Adjustment)

County Project Coordinates	
Northing	<u>208945.8459</u>
Easting	<u>520994.2647</u>
Date	<u>7/08/02</u>

I hereby certify that this United States public land survey monument record is correct and complete to the best of my knowledge and belief.

*David Zieglmeier* Date 6/28/23

David Zieglmeier Anoka County Surveyor  
 Minnesota License Number 46179

# HISTORY OF GOVERNMENT CORNER

Page No. 73

County of Anoka

State of Minnesota

East 1/4 Corner of Sec. 22 Township 33 Range 23

## **CORNER HISTORY:**

October 31, 1963 - Set cast iron monument and established ties to monument by N.C. Hoium.

June 9, 1965 - Found cast iron monument down 0.3'± and updated ties.

July 3, 1970 - Found cast iron monument and updated ties.

August 7, 1974 - Found cast iron monument and updated ties.

July 12, 1977 - Found cast iron monument and updated ties.

June 18, 1981 - Found cast iron monument and updated ties.

July 5, 1984 - Found cast iron monument and updated ties.

July 8, 2002 - Found cast iron monument and updated ties. Established NAD 1983 (1996 adj.) Anoka County project coordinates by static GPS methods.

January 29, 2013 - Found cast iron monument down 0.3'± and updated ties.

May 11, 2018 - Found cast iron monument down 0.3'± and updated ties.

October 26, 2021 - Found cast iron monument down 0.3'±, verified position by VRS GPS methods and updated ties.

June 6, 2023 - Found cast iron monument down 0.3'±, verified position by ACS RTK GPS method, updated and verified ties to historical record of section corner.