

CERTIFICATE OF LOCATION OF GOVERNMENT CORNER

County of Anoka

State of Minnesota

West 1/4 Corner of Sec. 24 Township 33 Range 23

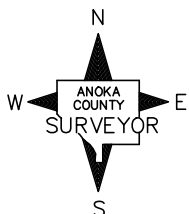
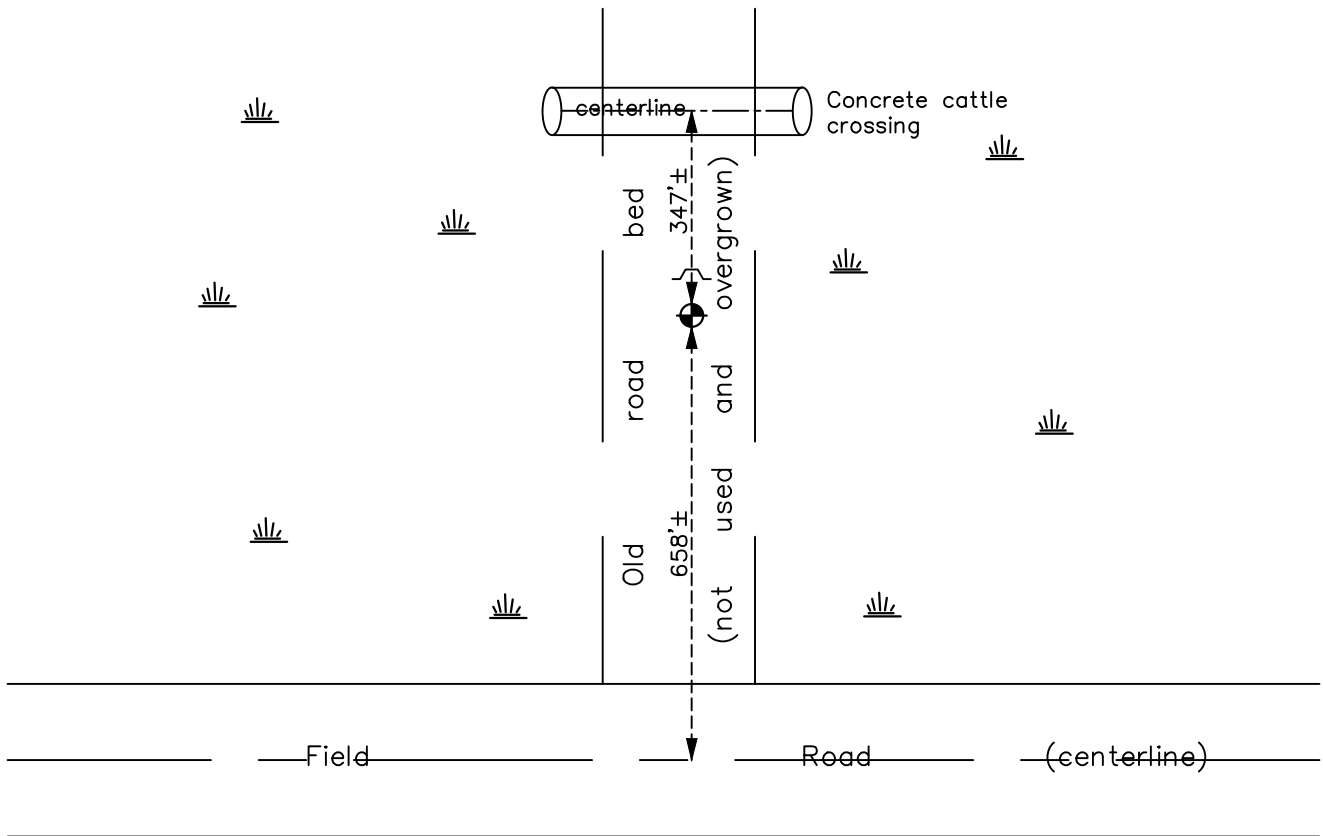
On the 28th day of October, 1970, the described corner was evidenced by area resurvey

and to perpetuate the location of said corner, at the exact location thereof, a permanent marker was placed consisting of a cast iron monument with a sign and post on the north side

AND on the 1st day of November, 2021, said permanent marker was found down 0.2'±.

All ties to trees were found missing with no additional features available for ties.

Updated reference ties are as shown below.



Revision Date

01/10/2022

N.A.D. 1983 Coordinates
(1996 Adjustment)

County Project Coordinates

Northing 208863.3110

Easting 526401.6593

Date 3/12/03

I hereby certify that this United States public land survey monument record is correct and complete to the best of my knowledge and belief.

David Zieglmeier Date 2/1/23

David Zieglmeier, Anoka County Surveyor

Minnesota License Number 46179

HISTORY OF GOVERNMENT CORNER

Page No. 74

County of Anoka

State of Minnesota

West 1/4 Corner of Sec. 24 Township 33 Range 23

CORNER HISTORY:

October 28, 1970 - Set cast iron monument flush using area resurvey and established ties to monument.

July 30, 1974 - Found cast iron monument and updated ties.

July 12, 1977 - Found cast iron monument and updated ties.

June 12, 1981 - Found cast iron monument and updated ties.

June 18, 1984 - Found cast iron monument and updated ties.

June 3, 1987 - Found cast iron monument and updated ties.

August 11, 1992 - Found cast iron monument and updated ties.

March 12, 2003 - Established NAD 1983 (1996 adj.) Anoka County project coordinates by static GPS methods.

January 29, 2013 - Found cast iron monument and updated ties.

November 1, 2021 - Found cast iron monument and verified position by VRS GPS methods.