

CERTIFICATE OF LOCATION OF GOVERNMENT CORNER

County of Anoka

State of Minnesota

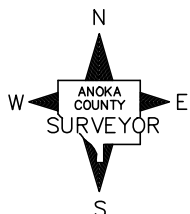
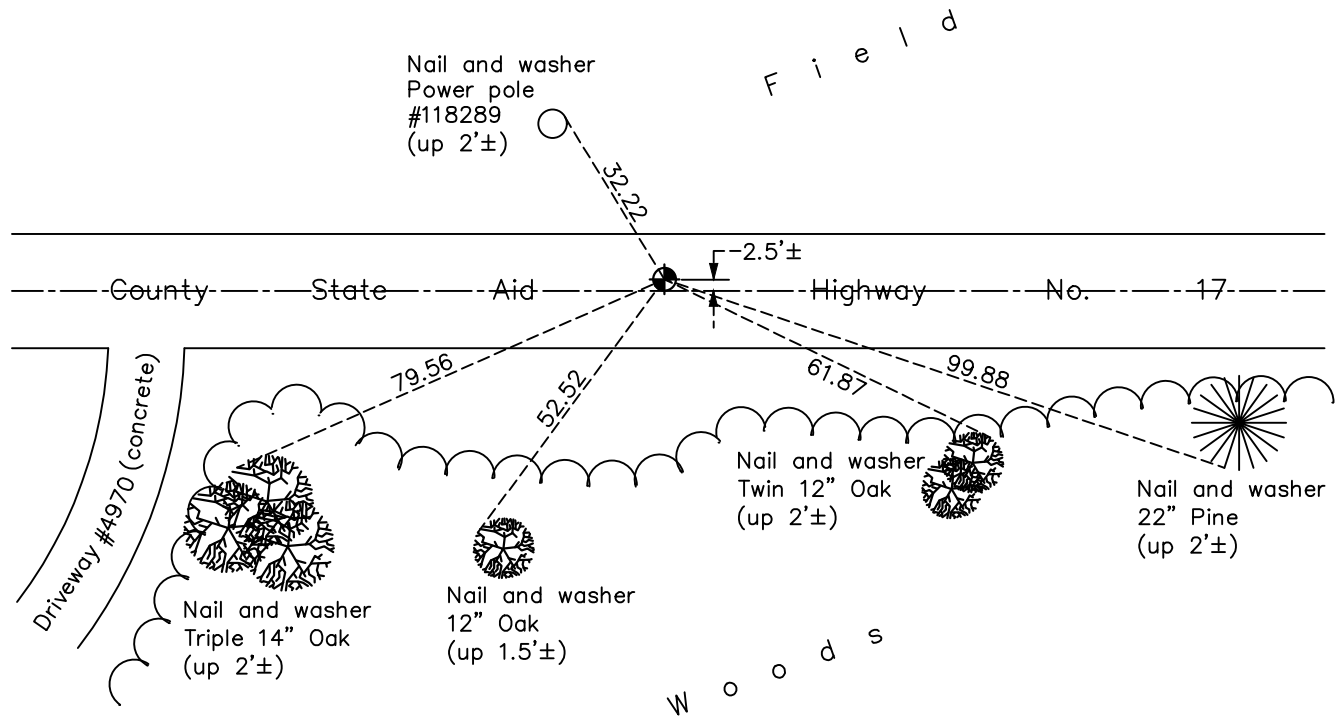
Northeast Corner of Sec. 25 Township 33 Range 23

On the 3rd day of July, 1967, the described corner was evidenced by a concrete monument

and to perpetuate the location of said corner, at the exact location thereof, a permanent marker was placed consisting of a cast iron monument

AND on the 7th day of October, 2021, said permanent marker was found flush and the ties were updated

Updated reference ties are as shown below.



Revision Date

01/10/2022

N.A.D. 1983 Coordinates
(1996 Adjustment)

County Project Coordinates

Northing 206166.1955

Easting 531855.8154

Date 4/10/02

I hereby certify that this United States public land survey monument record is correct and complete to the best of my knowledge and belief.

David Zieglmeier Date 2/1/23

David Zieglmeier Anoka County Surveyor

Minnesota License Number 46179

HISTORY OF GOVERNMENT CORNER

Page No. 75

County of Anoka

State of Minnesota

Northeast Corner of Sec. 25 Township 33 Range 23

CORNER HISTORY:

September 18, 1941 - Found oak hub in road and replaced with a concrete monument. Established ties to monument.

January 26, 1947 - Found concrete monument down 10" and updated ties.

June 14, 1960 - Found concrete monument chipped off and down 0.5'± with bent iron pipe. Determined center of concrete, straightened and reset iron pipe on north side and updated ties.

June 8, 1965 - Found concrete monument and updated ties.

July 3, 1967 - Replaced chipped concrete monument with a cast iron monument flush and updated ties.

June 24, 1970 - Found cast iron monument and updated ties.

July 25, 1974 - Found cast iron monument and updated ties.

July 12, 1977 - Found cast iron monument and updated ties.

June 17, 1981 - Found cast iron monument and updated ties.

June 18, 1984 - Found cast iron monument and updated ties.

August 18, 1986 - Found cast iron monument and updated ties.

August 10, 1992 - Found cast iron monument and updated ties.

April 10, 2002 - Established NAD 1983 (1996 adj.) Anoka County project coordinates by static GPS methods.

January 30, 2013 - Found cast iron monument. Verified position by VRS GPS methods. Updated ties.

June 11, 2014 - Found cast iron monument, verified position by VRS GPS methods, updated ties and loosened monument top prior to road overlay.

October 6, 2014 - Found cast iron monument and raised top flush after road overlay.

May 4, 2018 - Found cast iron monument flush. Verified position by VRS GPS methods. Updated ties.

October 07, 2021 - Found cast iron monument flush. Verified position by VRS GPS methods. Updated ties.