

CERTIFICATE OF LOCATION OF GOVERNMENT CORNER

County of Anoka

State of Minnesota

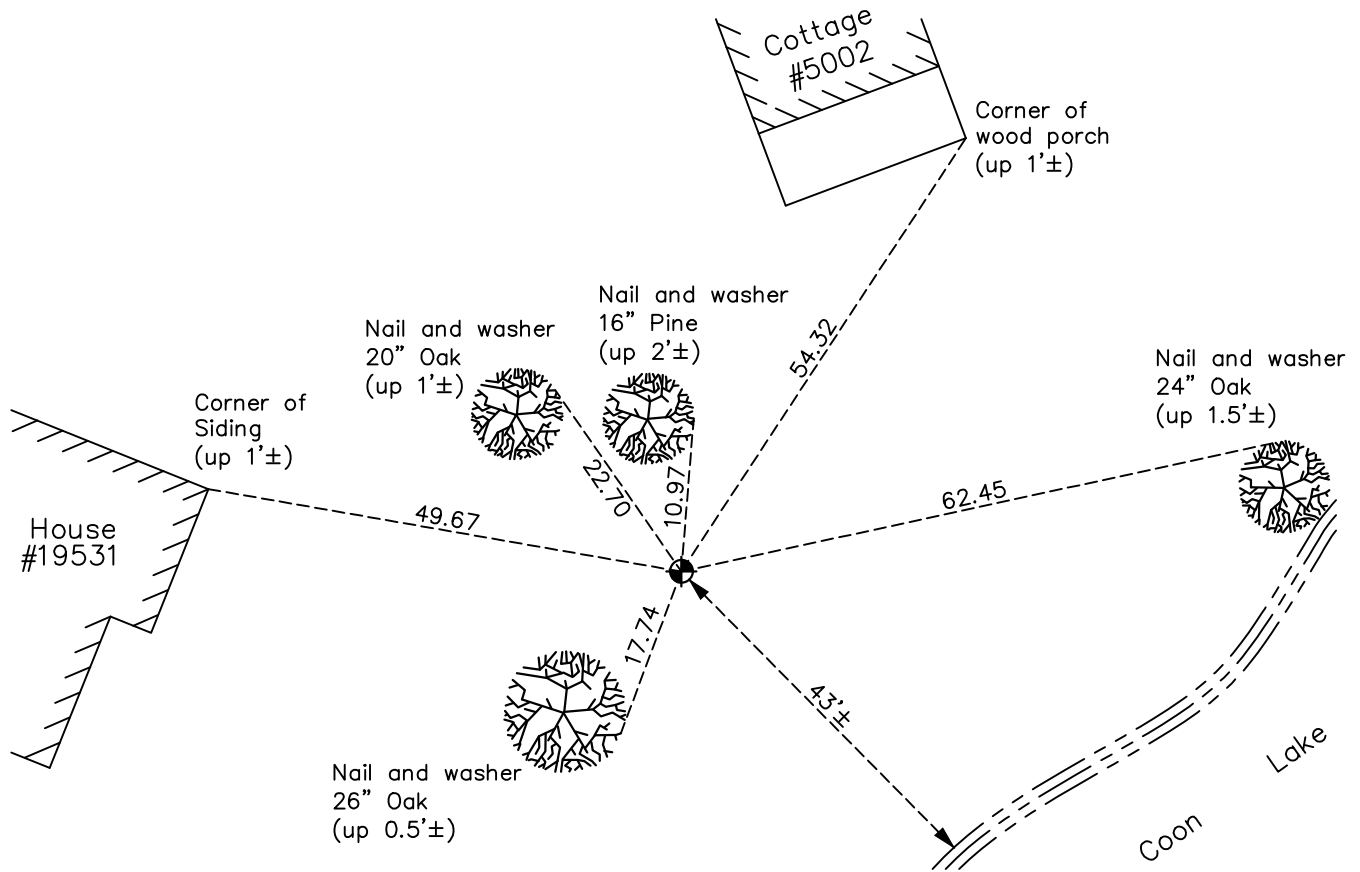
Meander Corner of Sec. 25 Township 33 Range 23 (Meander Corner No. 14--on east line of section)

On the 15th day of June, 1960, the described corner was evidenced by a concrete monument

and to perpetuate the location of said corner, at the exact location thereof, a permanent marker was placed consisting of a cast iron monument

AND on the 25th day of October, 2021, said permanent marker was found down 0.1'± and the ties were updated

Updated reference ties are as shown below.



Revision Date
01/10/2022

N.A.D. 1983 Coordinates
 (1996 Adjustment)

County Project Coordinates	
Northing	<u>205316.9253</u>
Easting	<u>531850.9350</u>
Date	<u>7/15/02</u>

I hereby certify that this United States public land survey monument record is correct and complete to the best of my knowledge and belief.
David Zieglmeier Date 2/1/23
 David Zieglmeier Anoka County Surveyor
 Minnesota License Number 46179

HISTORY OF GOVERNMENT CORNER

Page No. 76

County of Anoka

State of Minnesota

Meander Corner of Sec. 25 Township 33 Range 23
(Meander Corner No. 14—on east line of section)

CORNER HISTORY:

June 15, 1960 - Found concrete monument flush and set a pinched iron pipe on north side. Updated ties.

June 8, 1965 - Found concrete monument with pinched iron pipes on north and south sides. Updated ties.

July 3, 1967 - Found concrete monument and updated ties.

August 12, 1974 - Replaced concrete with a cast iron monument flush and updated ties.

July 13, 1977 - Found cast iron monument and updated ties.

June 12, 1981 - Found cast iron monument and updated ties.

July 3, 1984 - Found cast iron monument and updated ties.

June 3, 1987 - Found cast iron monument and updated ties.

August 24, 1992 - Found cast iron monument and updated ties.

July 15, 2002 - Found cast iron monument and updated ties.

February 14, 2013 - Found cast iron monument and updated ties.

May 7, 2018 - Found cast iron monument down 0.1'± and updated ties.

October 25, 2021 - Found cast iron monument down 0.1'±, verified position by VRS GPS methods and updated ties.