

CERTIFICATE OF LOCATION OF GOVERNMENT CORNER

County of Anoka

State of Minnesota

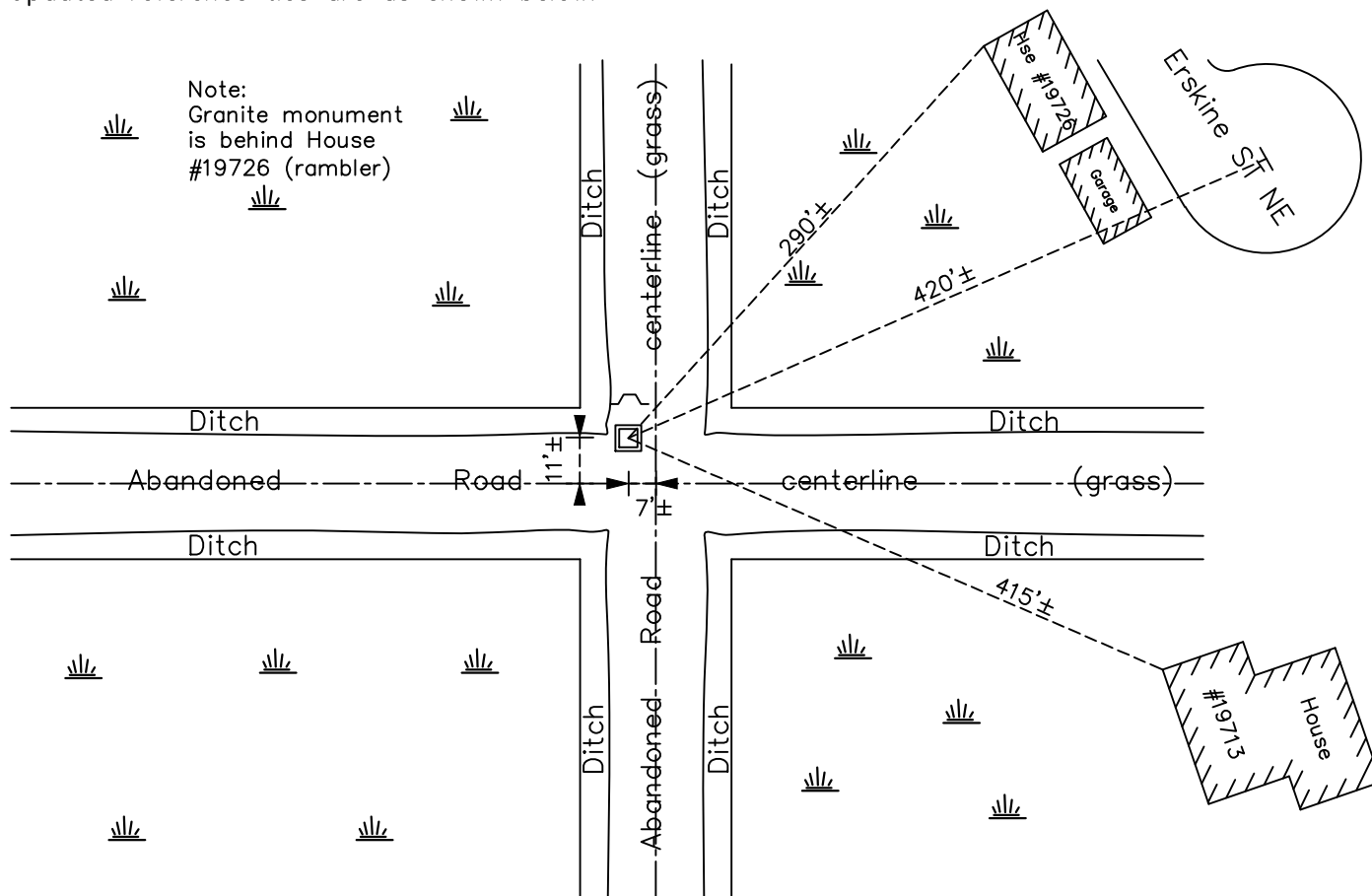
Northwest Corner of Sec. 25 Township 33 Range 23

On the 24th day of May, 1962, the described corner was evidenced by a granite monument from resurvey

and to perpetuate the location of said corner, at the exact location thereof, a permanent marker was placed consisting of the same granite monument with a 3/4" iron pipe and a sign and post on the north side

AND on the 6th day of June, 2023, said permanent marker was found leaning West and was removed. Replaced with Telspar w/ punched cap set to published coordinates. No ties available.

Updated reference ties are as shown below.



Revision Date
6/20/2023

N.A.D. 1983 Coordinates
(1996 Adjustment)

County Project Coordinates	
Northing	<u>206214.9286</u>
Easting	<u>526467.6876</u>
Date	<u>4/23/03</u>

I hereby certify that this United States public land survey monument record is correct and complete to the best of my knowledge and belief.

David Zieglmeier Date 12/11/23

David Zieglmeier Anoka County Surveyor
Minnesota License Number 46179

HISTORY OF GOVERNMENT CORNER

Page No. 78

County of Anoka

State of Minnesota

Northwest Corner of Sec. 25 Township 33 Range 23

CORNER HISTORY:

May 24, 1962 - Found 6" square granite monument leaning, straightened and placed red and white 1" iron pipe on north side up 4'. Updated ties.

July 10, 1970 - Found granite monument, no ties available.

July 25, 1974 - Found granite monument, no ties available.

July 13, 1977 - Found granite monument, no ties available.

August 15, 1979 - Found granite monument missing.

June 16, 1981 - Found granite monument using area resurvey & set 3/4" iron pipe on north side. Updated ties.

June 18, 1984 - Found granite monument and updated ties.

September 23, 1988 - Found granite monument, no ties available.

August 11, 1992 - Found granite monument, no ties available.

August 10, 2000 - Found granite monument, no ties available.

April 23, 2003 - Established NAD 1983 (1996 adj.) Anoka County project coordinates by static GPS methods.

January 17, 2013 - Found granite monument leaning slightly west and verified position by VRS GPS methods.

May 8, 2018 - Found granite monument leaning slightly west and verified position by VRS GPS methods.

November 1, 2021 - Found granite monument leaning west and verified position by VRS GPS methods.

June 6, 2023 - Found granite monument leaning. Removed granite monument and pipe and replaced with 2" square by 6' steel Telspar w/ punched cap. Telspar set with ACS RTK GPS method to published coordinates up 1'±. No ties available. New sign and post set to North, facing South.