

CERTIFICATE OF LOCATION OF GOVERNMENT CORNER

County of Anoka

State of Minnesota

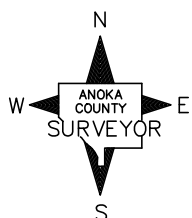
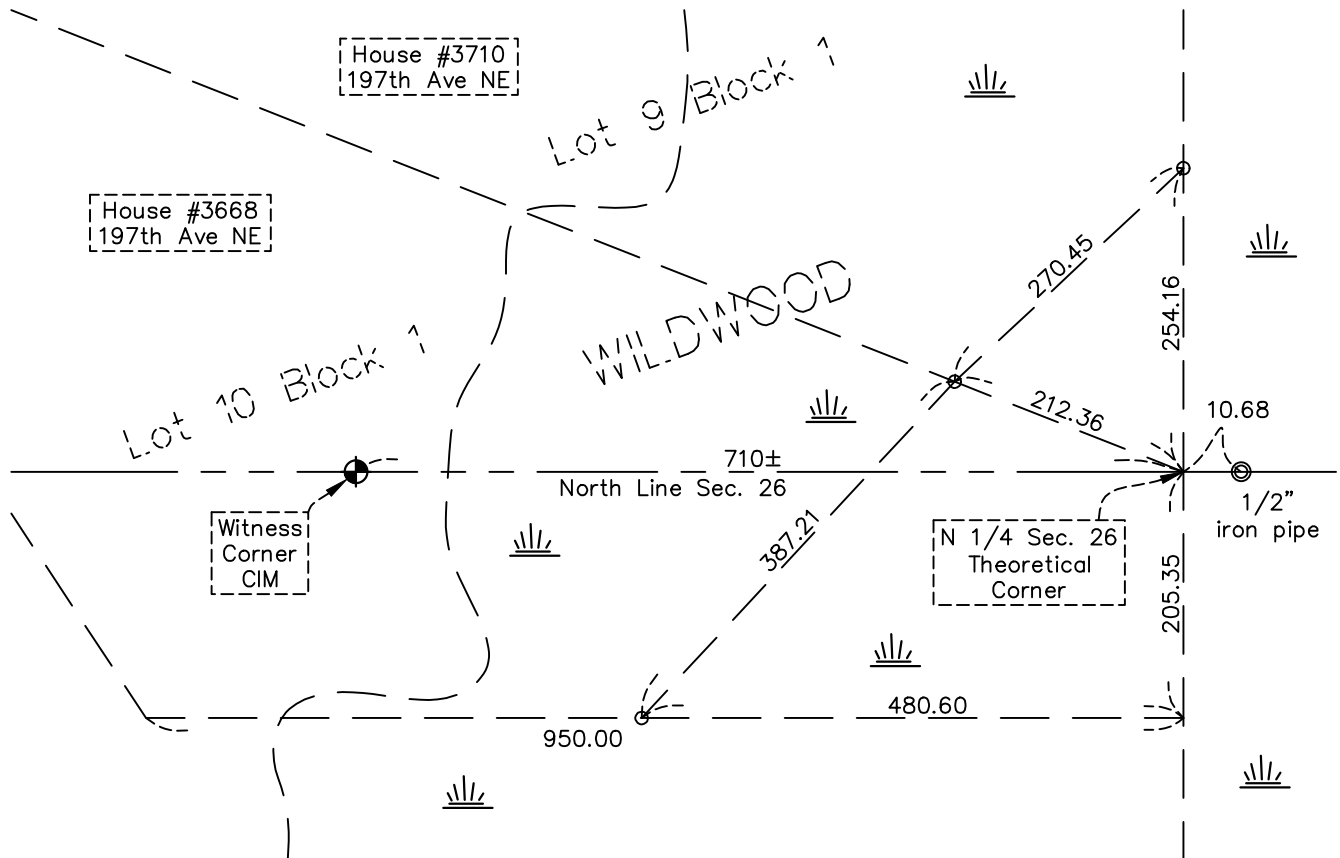
North 1/4 Corner of Sec. 26 Township 33 Range 23

On the 25th day of February, 2025, the described corner was evidenced by no monument found at computed position

and to perpetuate the location of said corner, at the exact location thereof, a permanent marker was placed consisting of no monument set. A witness corner was set 710'± westerly along section line on 12/3/2024

AND on the 25th day of February, 2025, said permanent marker was not found at computed position. Found 1/2" iron pipe 10.68 feet S85°02'45"E of computed position of N1/4 corner.

Updated reference ties are as shown below.



Revision Date
3/28/2025

N.A.D. 1983 Coordinates
 (2011 Adjustment)

County Project Coordinates	
Northing	<u>206258.387</u>
Easting	<u>523742.294</u>
Date	<u>COMPUTED POSITION</u>

I hereby certify that this United States public land survey monument record is correct and complete to the best of my knowledge and belief.

David Zieglmeier Date 9/10/25

David M. Zieglmeier, Anoka County Surveyor
 Minnesota License Number 46179

HISTORY OF GOVERNMENT CORNER

County of Anoka

State of Minnesota

North 1/4 Corner of Sec. 26 Township 33 Range 23

CORNER HISTORY:

November 1856 - This corner was established by Hiram Taylor, Deputy Surveyor. Taylor marked this position by "set quarter section post" with two bearing trees marked as accessories. Distance of 40.50 chains west of NW Corner Section 25 and 40.50 chains east of NW Corner Section 26.

1972 - BAYER AND HANSEN ADDITION plat used a distance of 2725.74' from the NE Corner Section 26 to the North Quarter Corner of Section 26 (per Anoka County memorandum dated 11/30/2005).

1992 - WILDWOOD plat used the same distance of 2725.74' from the NE Corner Section 26 to the North Quarter Corner of Section 26 (per Anoka County memorandum dated 11/30/2005).

October 1996 - THE PARK plat used a different location using a distance of 2730.72' from the SE Corner Section 23 to the South Quarter Corner of Section 23. After researching, a letter was sent that they supported the original distance of 2725.74' as used previously (per Anoka County memorandum dated 11/30/2005).

2001 - OAKWOOD MEADOWS plat used the same distance of 2725.74' from the SE Corner Section 23 to the South Quarter Corner of Section 23 (per Anoka County memorandum dated 11/30/2005).

2002 - GOOSE LAKE ESTATES SECOND ADDITION plat used a split distance of 2715.80' for the south line of the SE Quarter of Section 23. However indicated that they could agree with the distance of 2725.74' as the distance between SE Corner Section 23 to the South Quarter Corner of Section 23 (per Anoka County memorandum dated 11/30/2005).

November 30, 2005 - A meeting was held in the Anoka County Surveyor's Office regarding the location of the south quarter corner of Section 23, Township 33, Range 23, East Bethel. Consensus of the group was to use the distance originally used by Gordon Christenson and Roland Anderson of 2725.74 feet from the northeast corner of Section 26 to the north quarter corner of Section 26, Township 33, Range 23.

December 3, 2024 - Set **Witness Corner** cast iron monument 710.00' westerly along NW Quarter line Sec 26 from north quarter corner computed position down 0.1'±, using area resurvey & static GPS method. Verified position by RTK GPS method. Sign and post on east side. Established ties to monument. Job # 24-145

***Computed N 1/4 Sec 26 N = 206258.387 E = 523742.294 NAD83 (2011 adj.)

***Witness Corner (RTK) N = 206269.711 E = 523032.354 NAD83 (2011 adj.)

February 25, 2025 - North quarter monument not found. Found 1/2" iron pipe up 1'± leaning slightly south, 10.68 feet S85°02'45"E from computed north 1/4 corner position using VRS GPS methods. Job # 24-145.

***1/2" iron pipe (RTK) N = 206257.465 E = 523752.931 NAD83 (2011 adj.)