

CERTIFICATE OF LOCATION OF GOVERNMENT CORNER

County of Anoka

State of Minnesota

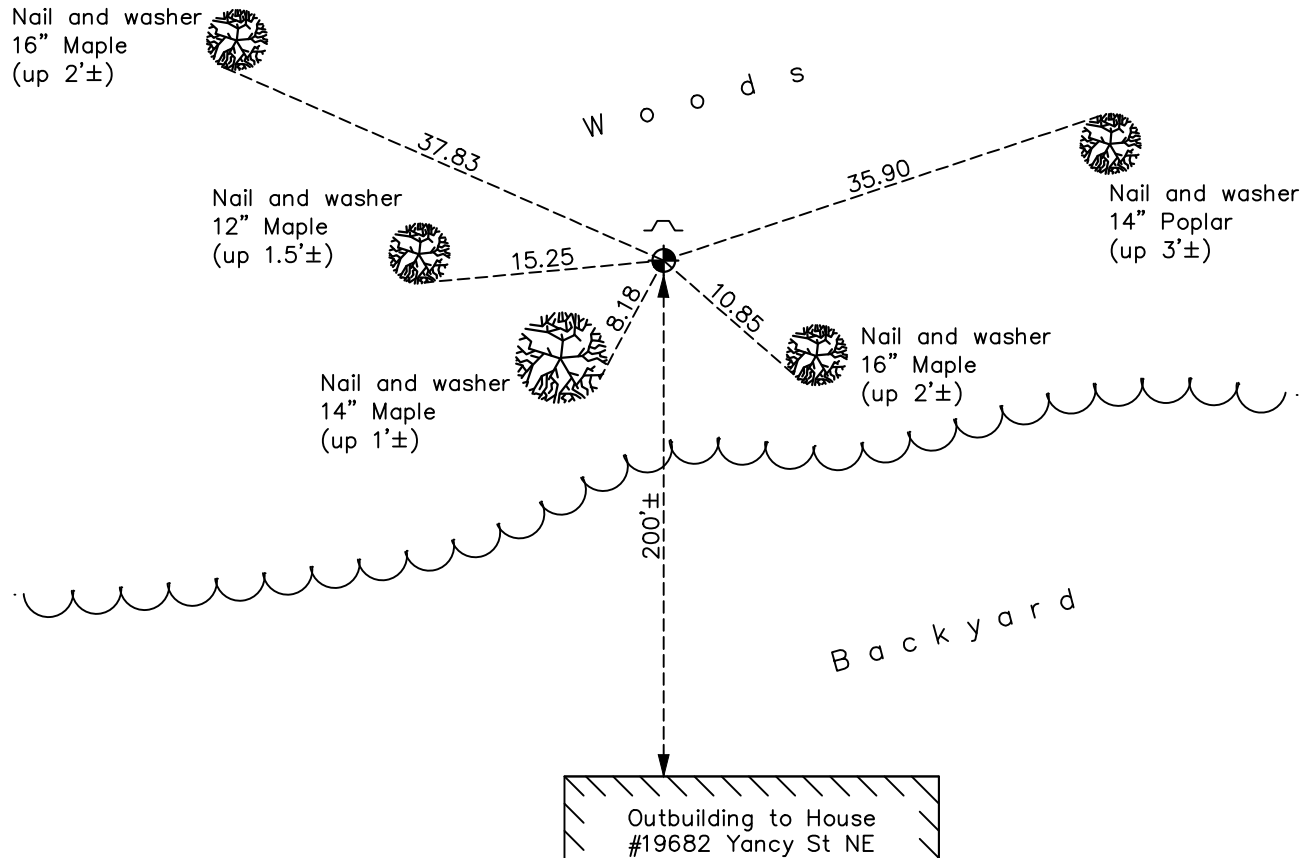
Southwest Corner of Sec. 22 Township 33 Range 23

On the 9th day of August, 1974, the described corner was evidenced by a 2" iron pipe

and to perpetuate the location of said corner, at the exact location thereof, a permanent marker was placed consisting of a cast iron monument with a sign and post on the north side

AND on the 19th day of October, 2021, said permanent marker was found up 0.1'± and the ties were updated

Updated reference ties are as shown below.



Revision Date
 01/19/2022

N.A.D. 1983 Coordinates
 (1996 Adjustment)

County Project Coordinates	
Northing	<u>206306.3391</u>
Easting	<u>515712.9328</u>
Date	<u>6/11/02</u>

I hereby certify that this United States public land survey monument record is correct and complete to the best of my knowledge and belief.
David Zieglmeier Date 2/1/23
 David Zieglmeier Anoka County Surveyor
 Minnesota License Number 46179

HISTORY OF GOVERNMENT CORNER

Page No. 82

County of Anoka

State of Minnesota

Southwest Corner of Sec. 22 Township 33 Range 23

CORNER HISTORY:

March 15, 1967 - Found 2" x 3' iron pipe up 1.3'± and established ties to monument.

August 21, 1968 - Found 2" iron pipe and updated ties.

August 9, 1974 - Set cast iron monument using corner ties and updated the ties.

July 13, 1977 - Found cast iron monument and updated ties.

June 18, 1981 - Found cast iron monument and updated ties.

June 21, 1984 - Found cast iron monument and updated ties.

June 9, 1987 - Found cast iron monument and updated ties.

August 19, 1992 - Found cast iron monument and updated ties.

August 15, 1997 - Found cast iron monument and updated ties.

June 26, 2000 - Found cast iron monument and updated ties.

June 11, 2002 - Found cast iron monument and updated ties. Established NAD 1983 (1996 adj.) Anoka County project coordinates by static GPS methods.

January 30, 2013 - Found cast iron monument and updated ties.

May 29, 2018 - Found cast iron monument up 0.1'± and updated ties.

October 19, 2021 - Found cast iron monument up 0.1'±, verified position by GPS VRS method and updated ties.