

# CERTIFICATE OF LOCATION OF GOVERNMENT CORNER

County of Anoka

State of Minnesota

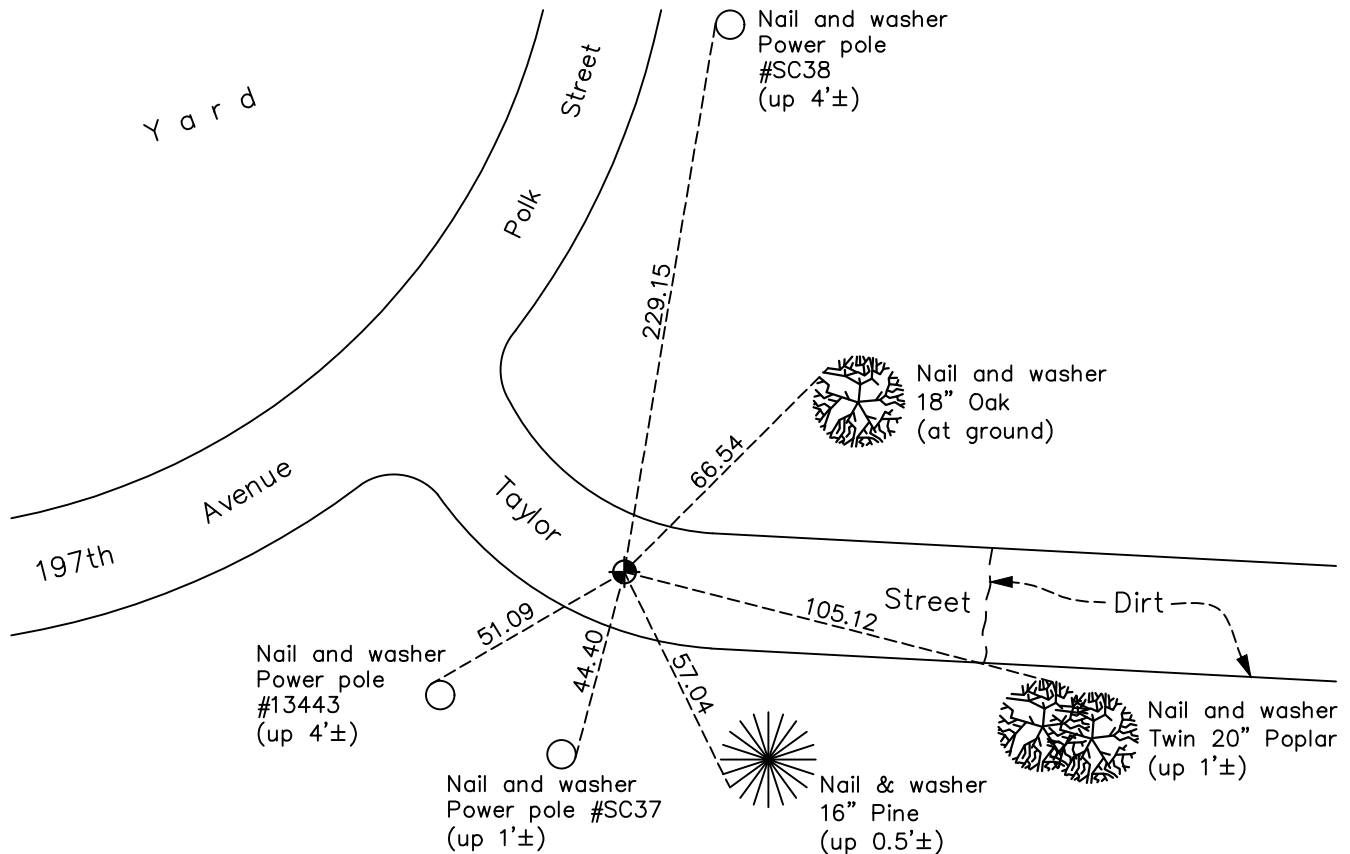
## Northwest Corner of Sec. 29 Township 33 Range 23

On the 1st day of July, 1963, the described corner was evidenced by a cast iron monument set by N.C. Hoium

and to perpetuate the location of said corner, at the exact location thereof, a permanent marker was placed consisting of a partial cast iron monument set in concrete

AND on the 7th day of October, 2021, said permanent marker was found flush and the ties were updated (on  $\cancel{C}/\cancel{C}$  extended)

Updated reference ties are as shown below.



Revision Date  
 01/19/2022

N.A.D. 1983 Coordinates  
 (1996 Adjustment)

County Project Coordinates	
Northing	<u>206359.1745</u>
Easting	<u>505053.5316</u>
Date	<u>4/05/02</u>

I hereby certify that this United States public land survey monument record is correct and complete to the best of my knowledge and belief.  
David Zieglmeier Date 2/1/23  
 David Zieglmeier Anoka County Surveyor  
 Minnesota License Number 46179

# HISTORY OF GOVERNMENT CORNER

Page No. 86

County of Anoka

State of Minnesota

## Northwest Corner of Sec. 29 Township 33 Range 23

### **CORNER HISTORY:**

July 1, 1963 - Set cast iron monument flush and established ties to monument.

September 24, 1964 - Found cast iron monument (labeled "Property Corner") flush and updated ties.

June 23, 1970 - Found cast iron monument down 0.1'± and updated ties.

August 13, 1974 - Found cast iron monument and updated ties.

July 15, 1977 - Found cast iron monument and updated ties.

June 11, 1981 - Found cast iron monument and updated ties.

June 12, 1984 - Found cast iron monument and updated ties.

June 2, 1987 - Found cast iron monument and updated ties.

July 29, 1992 - Found cast iron monument and updated ties.

July 30, 1997 - Found cast iron monument and updated ties.

May 16, 2000 - Found cast iron monument and updated ties.

April 5, 2002 - Established NAD 1983 (1996 adj.) Anoka County project coordinates by static GPS methods.

May 12, 2003 - Found cast iron monument, set construction ties and removed prior to road construction.

August 27, 2003 - Set partial cast iron monument in concrete and updated ties after road construction.

February 20, 2013 - Found cast iron monument. Verified position by VRS GPS methods. Updated ties.

April 17, 2018 - Found cast iron monument. Verified position by VRS GPS methods. Updated ties.

October 7, 2021 - Found cast iron monument. Verified position by VRS GPS methods. Updated ties.