

CERTIFICATE OF LOCATION OF GOVERNMENT CORNER

County of Anoka

State of Minnesota

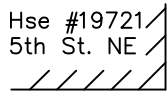
South 1/4 Corner of Sec. 19 Township 33 Range 23

On the 5th day of May, 1972, the described corner was evidenced by a 3/4" iron pipe

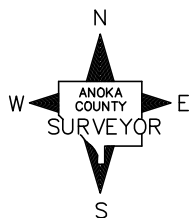
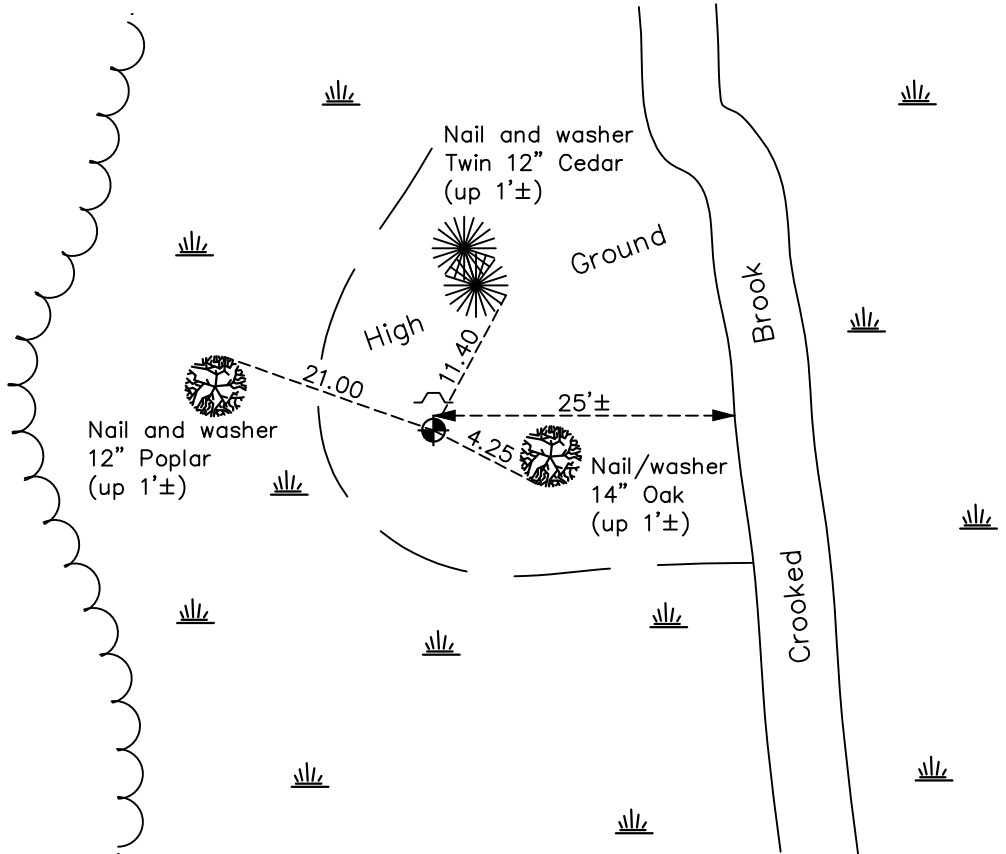
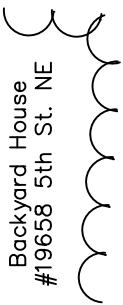
and to perpetuate the location of said corner, at the exact location thereof, a permanent marker was placed consisting of a cast iron monument with a sign and post on the north side

AND on the 7th day of October, 2021, said permanent marker was found up 0.1'± and the ties were updated

Updated reference ties are as shown below.



W o o d s



N.A.D. 1983 Coordinates
(1996 Adjustment)

County Project Coordinates	
Northing	<u>206397.9688</u>
Easting	<u>502406.0134</u>
Date	<u>3/25/03</u>

Revision Date
01/20/2022

I hereby certify that this United States public land survey monument record is correct and complete to the best of my knowledge and belief.

David Zieglmeier Date 2/1/23

David Zieglmeier Anoka County Surveyor
Minnesota License Number 46179

HISTORY OF GOVERNMENT CORNER

Page No. 87

County of Anoka

State of Minnesota

South 1/4 Corner of Sec. 19 Township 33 Range 23

CORNER HISTORY:

May 5, 1972 - Found 3/4" iron pipe during area resurvey, replaced iron pipe with a cast iron monument and updated ties.

August 13, 1974 - Found cast iron monument and updated ties.

July 15, 1977 - Found cast iron monument and updated ties.

June 15, 1981 - Found cast iron monument and updated ties.

June 19, 1984 - Found cast iron monument and updated ties.

November 19, 1987 - Found cast iron monument and updated ties.

August 19, 1992 - Found cast iron monument and updated ties.

March 25, 2003 - Found cast iron monument and updated ties. Established NAD 1983 (1996 adj.) Anoka County project coordinates by static GPS methods.

March 1, 2013 - Found cast iron monument up 0.2'± and updated ties.

March 8, 2019 - Found cast iron monument up 0.2'± and updated ties.

October 7, 2021 - Found cast iron monument up 0.1'±, verified position by VRS GPS method and updated ties.