

CERTIFICATE OF LOCATION OF GOVERNMENT CORNER

County of Anoka

State of Minnesota

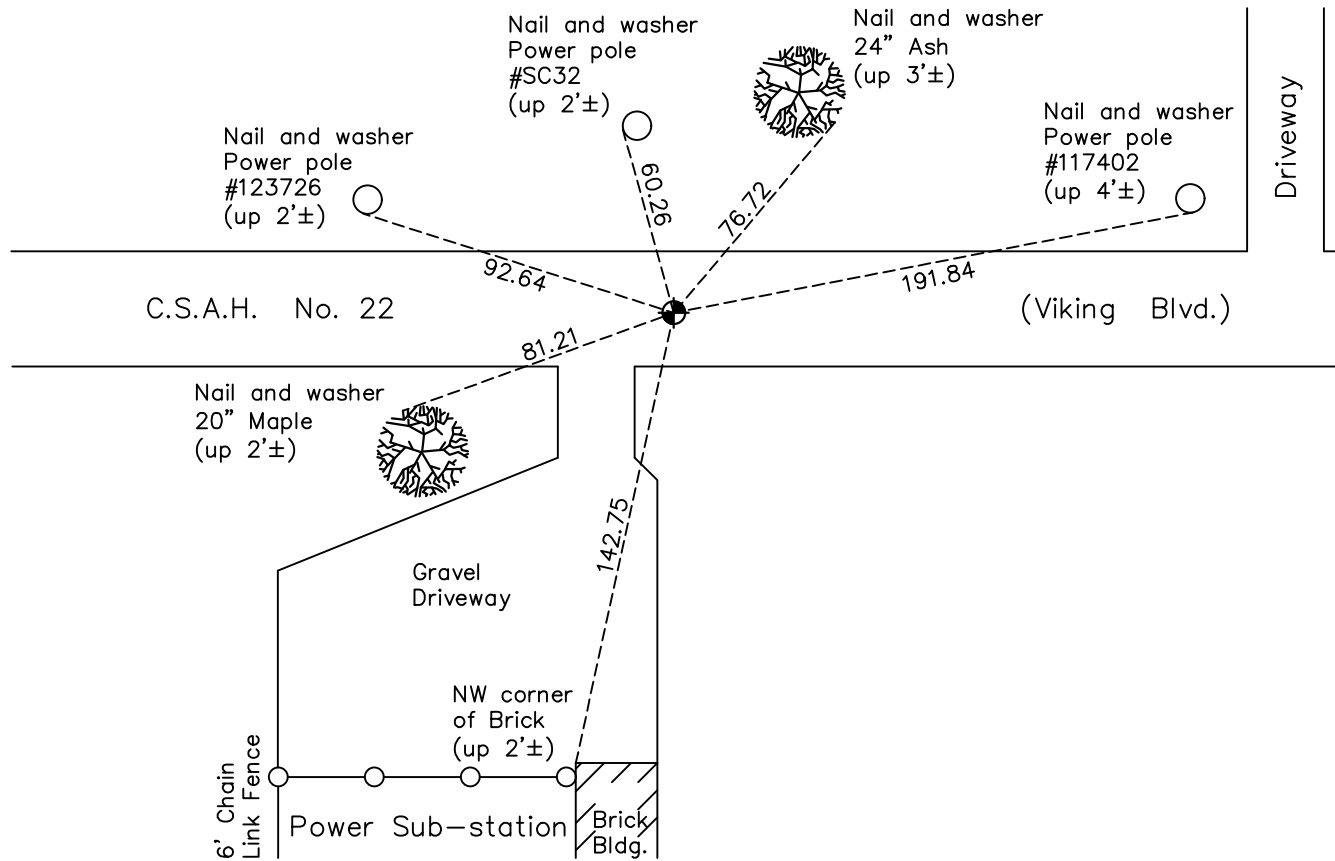
West 1/4 Corner of Sec. 29 Township 33 Range 23

On the 1st day of July, 1963, the described corner was evidenced by a cast iron monument set by N.C. Hoium

and to perpetuate the location of said corner, at the exact location thereof, a permanent marker was placed consisting of the same cast iron monument

AND on the 8th day of November, 2021, said permanent marker was found flush and the ties were updated

Updated reference ties are as shown below.



Revision Date

01/20/2022

N.A.D. 1983 Coordinates
(1996 Adjustment)

County Project Coordinates	
Northing	<u>203721.3611</u>
Easting	<u>505158.1689</u>
Date	<u>5/08/02</u>

I hereby certify that this United States public land survey monument record is correct and complete to the best of my knowledge and belief.

David Zieglmeier Date 2/1/23

David Zieglmeier Anoka County Surveyor
Minnesota License Number 46179

HISTORY OF GOVERNMENT CORNER

Page No. 89

County of Anoka

State of Minnesota

West 1/4 Corner of Sec. 29 Township 33 Range 23

CORNER HISTORY:

July 1, 1963 - Set cast iron monument and established ties to monument.

September 24, 1964 - Found cast iron monument (labeled "Property Corner") down 0.1'± and updated ties.

June 23, 1970 - Replaced solid cast iron monument with a removable top cast iron monument flush and updated ties.

September 6, 1973 - Found cast iron monument and raised flush.

August 13, 1974 - Found cast iron monument and updated ties.

July 18, 1977 - Found cast iron monument and updated ties.

June 11, 1981 - Found cast iron monument and updated ties.

June 14, 1984 - Found cast iron monument and updated ties.

July 29, 1992 - Found cast iron monument and updated ties.

July 29, 1997 - Found cast iron monument and updated ties.

May 16, 2000 - Found cast iron monument and updated ties.

May 8, 2002 - Established NAD 1983 (1996 adj.) Anoka County project coordinates by static GPS methods.

February 20, 2013 - Found cast iron monument. Verified position by VRS GPS methods. Updated ties.

April 12, 2018 - Found cast iron monument. Verified position by VRS GPS methods. Updated ties.

November 8, 2021 - Found cast iron monument. Verified position by VRS GPS methods. Updated ties.