

CERTIFICATE OF LOCATION OF GOVERNMENT CORNER

County of Anoka

State of Minnesota

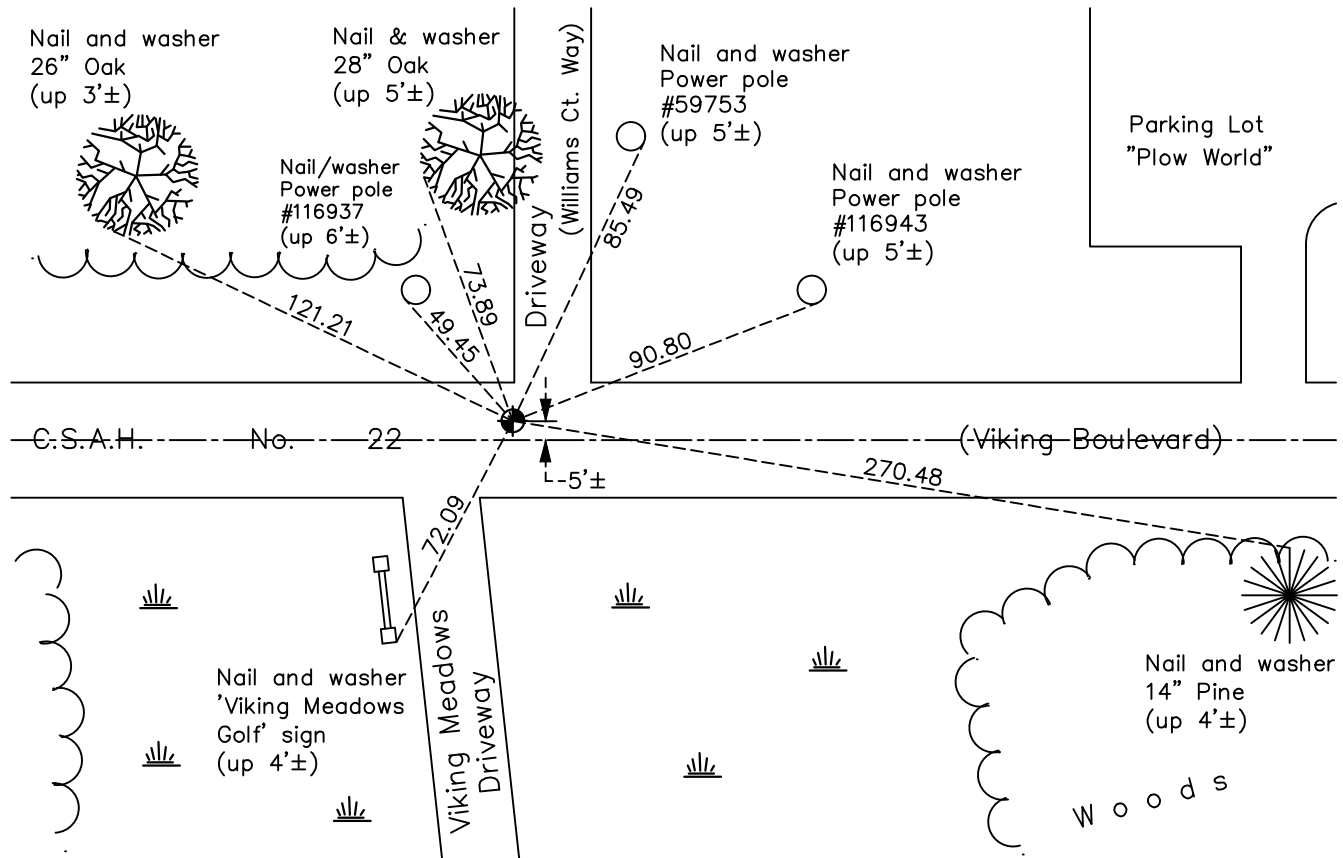
East 1/4 Corner of Sec. 29 Township 33 Range 23

On the 1st day of July, 1963, the described corner was evidenced by a cast iron monument set by N.C. Hoium

and to perpetuate the location of said corner, at the exact location thereof, a permanent marker was placed consisting of the same cast iron monument

AND on the 8th day of November, 2021, said permanent marker was found flush and the ties were updated.

Updated reference ties are as shown below.



Revision Date
 01/20/2022

N.A.D. 1983 Coordinates
 (1996 Adjustment)

County Project Coordinates	
Northing	203668.4399
Easting	510468.9342
Date	5/08/02

I hereby certify that this United States public land survey monument record is correct and complete to the best of my knowledge and belief.

David Zieglmeier Date 2/1/23

David Zieglmeier Anoka County Surveyor
 Minnesota License Number 46179

HISTORY OF GOVERNMENT CORNER

Page No. 90

County of Anoka

State of Minnesota

East 1/4 Corner of Sec. 29 Township 33 Range 23

CORNER HISTORY:

July 1, 1963 - Set cast iron monument and established ties to monument.

April 17, 1964 - Found cast iron monument, updated and added extra corner ties prior to road construction.

July 20, 1965 - Reset cast iron monument and updated ties after road construction.

June 15, 1970 - Found cast iron monument flush and updated ties.

August 13, 1974 - Found cast iron monument and updated ties.

July 19, 1977 - Found cast iron monument, raised and updated ties.

June 11, 1981 - Found cast iron monument and updated ties.

June 15, 1984 - Found cast iron monument and updated ties.

August 21, 1986 - Found cast iron monument and updated ties.

July 29, 1992 - Found cast iron monument and updated ties.

July 29, 1997 - Found cast iron monument and updated ties.

June 23, 2000 - Found cast iron monument and updated ties.

May 8, 2002 - Established NAD 1983 (1996 adj.) Anoka County project coordinates by static GPS methods.

September 21, 2012 - Set partial 6" cast iron monument (in concrete) on top of cast iron monument using static GPS and updated ties.

December 5, 2012 - Found cast iron monument. Verified position by VRS GPS methods. Updated ties.

April 20, 2018 - Found cast iron monument flush. Verified position by VRS GPS methods. Updated ties.

November 8, 2021 - Found cast iron monument flush. Verified position by VRS GPS methods. Updated ties.