

CERTIFICATE OF LOCATION OF GOVERNMENT CORNER

County of Anoka

State of Minnesota

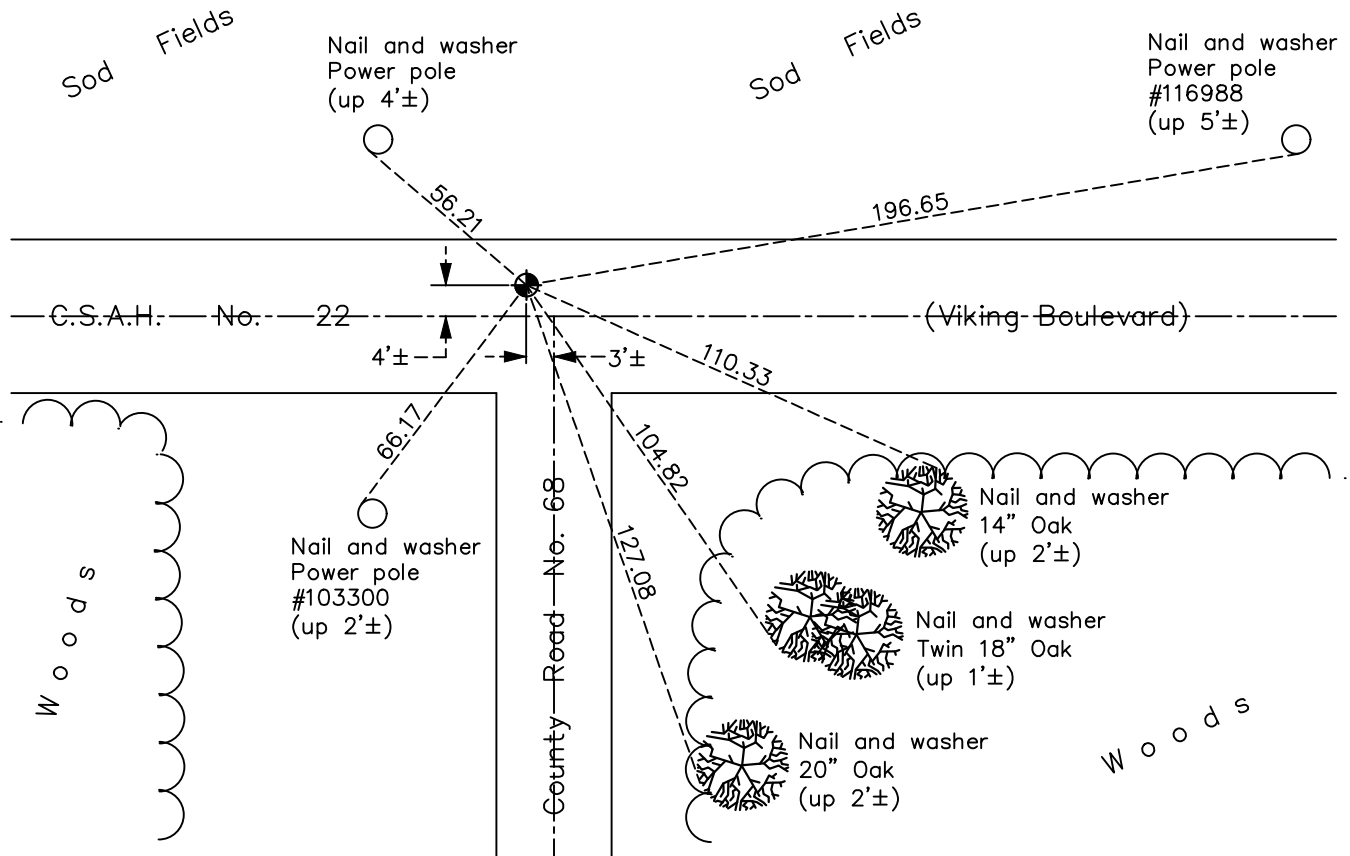
West 1/4 Corner of Sec. 27 Township 33 Range 23

On the 20th day of May, 1969, the described corner was evidenced by area resurvey

and to perpetuate the location of said corner, at the exact location thereof, a permanent marker was placed consisting of a cast iron monument

AND on the 8th day of November, 2021, said permanent marker was found flush and the ties were updated.

Updated reference ties are as shown below.



N.A.D. 1983 Coordinates
(1996 Adjustment)

County Project Coordinates	
Northing	<u>203661.6208</u>
Easting	<u>515831.4967</u>
Date	<u>5/08/02</u>

Revision Date
01/20/2022

I hereby certify that this United States public land survey monument record is correct and complete to the best of my knowledge and belief.

David Zieglmeier Date 2/1/23

David Zieglmeier Anoka County Surveyor
Minnesota License Number 46179

HISTORY OF GOVERNMENT CORNER

Page No. 91

County of Anoka

State of Minnesota

West 1/4 Corner of Sec. 27 Township 33 Range 23

CORNER HISTORY:

May 20, 1969 - Set cast iron monument flush using area resurvey and established ties to the monument.

August 12, 1974 - Found cast iron monument and updated ties.

July 19, 1977 - Found cast iron monument, raised and updated ties.

June 11, 1981 - Found cast iron monument and updated ties.

June 18, 1984 - Found cast iron monument and updated ties.

August 21, 1986 - Found cast iron monument and updated ties.

July 29, 1992 - Found cast iron monument and updated ties.

July 29, 1997 - Found cast iron monument and updated ties.

June 23, 2000 - Found cast iron monument and updated ties.

May 8, 2002 - Established NAD 1983 (1996 adj.) Anoka County project coordinates by static GPS methods.

September 21, 2012 - Set 6" partial cast iron monument in concrete on top of inplace full cast iron monument using static GPS and updated ties.

December 5, 2012 - Found cast iron monument. Verified position by VRS GPS methods. Updated ties.

April 20, 2018 - Found cast iron monument. Verified position by VRS GPS methods. Updated ties.

November 8, 2021 - Found cast iron monument. Verified position by VRS GPS methods. Updated ties.