

CERTIFICATE OF LOCATION OF GOVERNMENT CORNER

County of Anoka

State of Minnesota

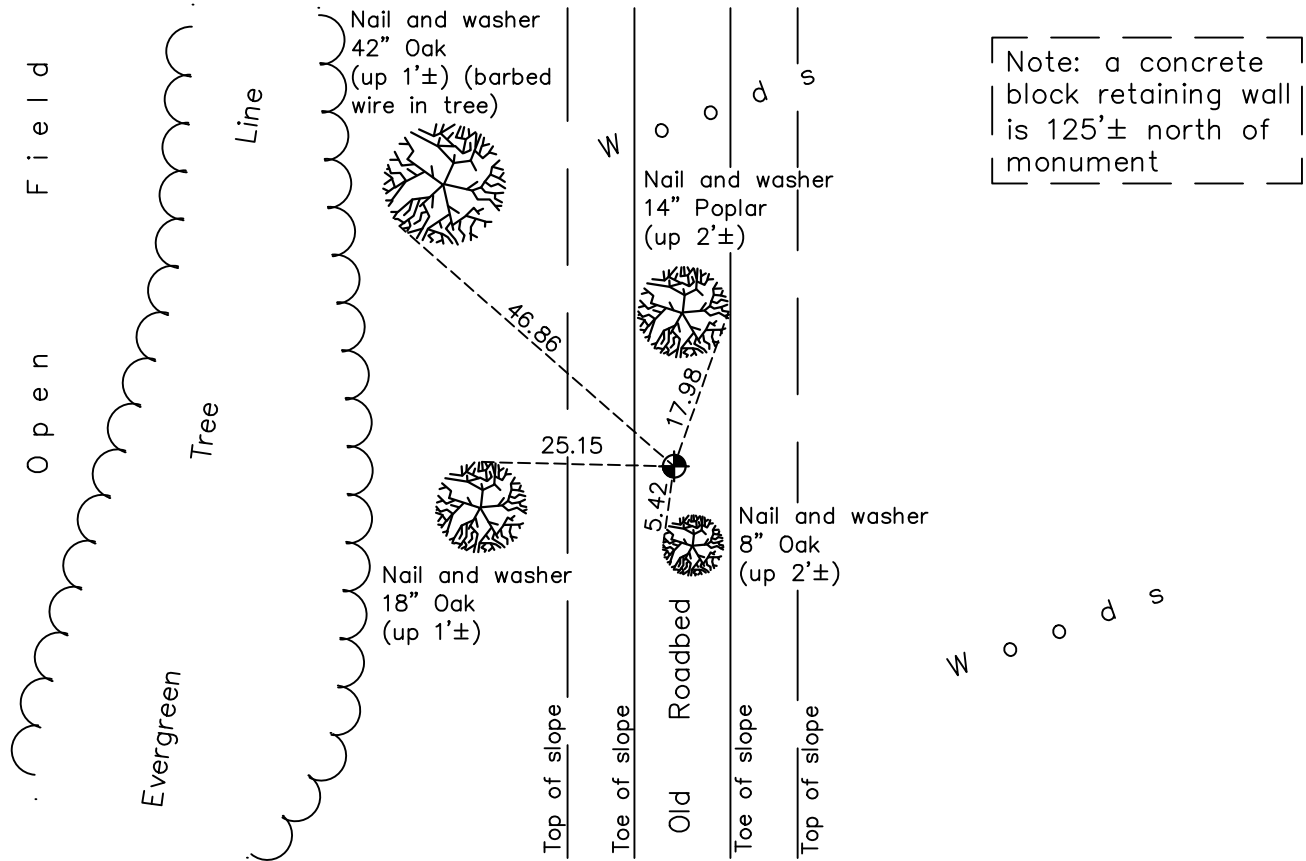
West 1/4 Corner of Sec. 25 Township 33 Range 23

On the 25th day of May, 1962, the described corner was evidenced by area resurvey

and to perpetuate the location of said corner, at the exact location thereof, a permanent marker was placed consisting of a cast iron monument

AND on the 27th day of October, 2021, said permanent marker was found up 0.2'± and the ties were updated. Sign and post not found.

Updated reference ties are as shown below.



Revision Date
01/20/2022

N.A.D. 1983 Coordinates
(1996 Adjustment)

County Project Coordinates	
Northing	<u>203569.1264</u>
Easting	<u>526508.2987</u>
Date	<u>3/25/03</u>

I hereby certify that this United States public land survey monument record is correct and complete to the best of my knowledge and belief.

David Zieglmeier Date 2/1/23

David Zieglmeier Anoka County Surveyor
Minnesota License Number 46179

HISTORY OF GOVERNMENT CORNER

Page No. 93

County of Anoka

State of Minnesota

West 1/4 Corner of Sec. 25 Township 33 Range 23

CORNER HISTORY:

May 25, 1962 - Set cast iron monument up 0.2'± using area resurvey. Established ties to the monument.

June 8, 1965 - Found cast iron monument and updated ties.

July 9, 1970 - Found cast iron monument and updated ties.

July 30, 1974 - Found cast iron monument and updated ties.

July 21, 1977 - Found cast iron monument and updated ties.

May 22, 1981 - Found cast iron monument and updated ties.

June 21, 1984 - Found cast iron monument and updated ties.

June 11, 1987 - Found cast iron monument and updated ties.

August 24, 1992 - Found cast iron monument and updated ties.

March 25, 2003 - Found cast iron monument and updated ties. Established NAD 1983 (1996 adj.) Anoka County project coordinates by static GPS methods.

February 12, 2013 - Found cast iron monument up 0.3'± and updated ties.

May 17, 2019 - Found cast iron monument up 0.3'± and updated ties.

October 27, 2021 - Found cast iron monument up 0.2'± and updated ties.