

CERTIFICATE OF LOCATION OF GOVERNMENT CORNER

County of Anoka

State of Minnesota

Meander Corner of Sec. 25 Township 33 Range 23

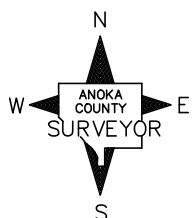
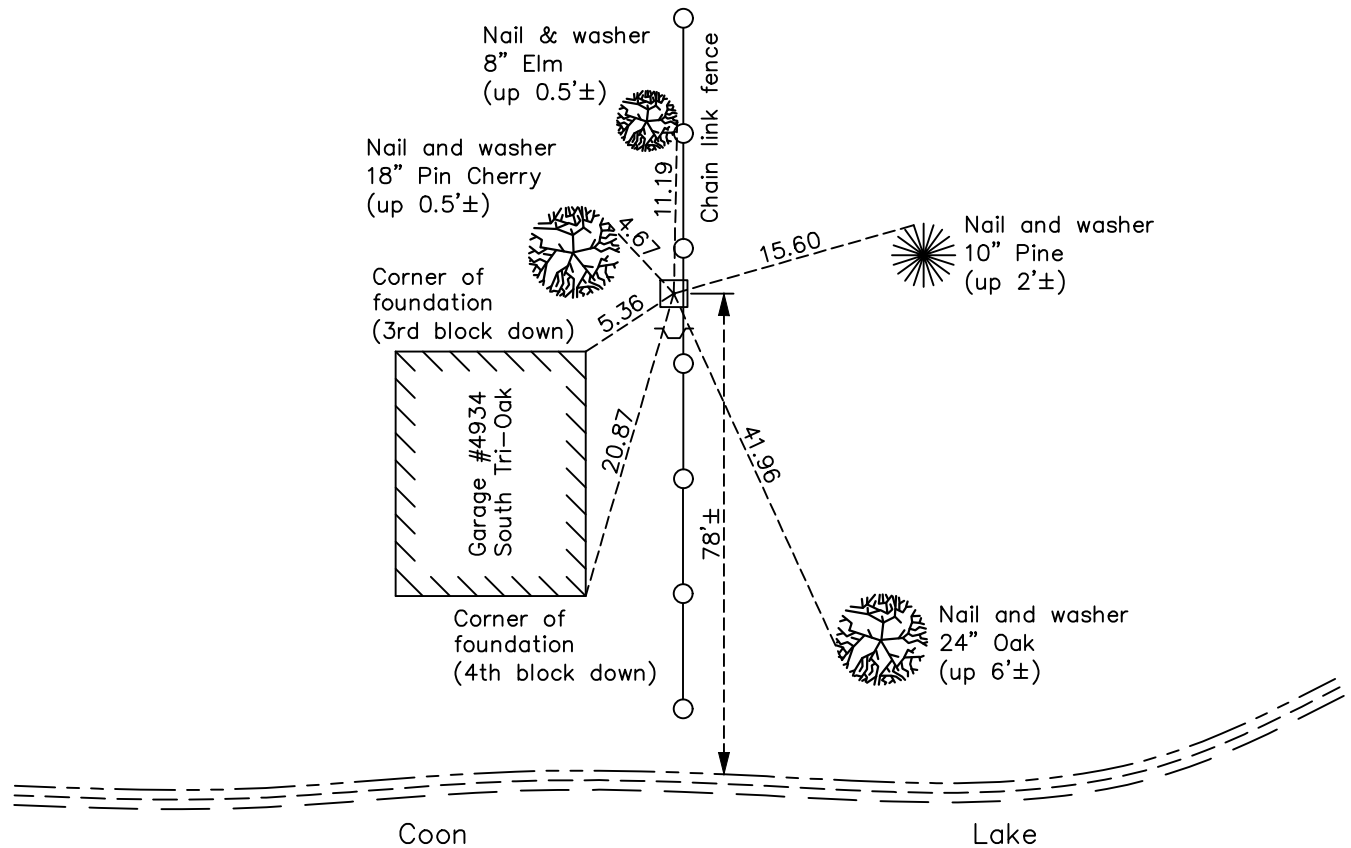
(Meander Corner No. 15—on east line of section)

On the 15th day of June, 1960, the described corner was evidenced by a concrete monument

and to perpetuate the location of said corner, at the exact location thereof, a permanent marker was placed consisting of the same concrete monument with a sign and post on the south side

AND on the 4th day of October, 2021, said permanent marker was found down 0.2'± and 0.5'± west of fence and the ties were updated. Top of monument is chipped.

Updated reference ties are as shown below.



Revision Date
 01/20/2022

N.A.D. 1983 Coordinates
 (1996 Adjustment)

County Project Coordinates	
Northing	<u>203832.9391</u>
Easting	<u>531840.1648</u>
Date	<u>7/15/02</u>

I hereby certify that this United States public land survey monument record is correct and complete to the best of my knowledge and belief.
David Zieglmeier Date 2/1/23
 David Zieglmeier Anoka County Surveyor
 Minnesota License Number 46179

HISTORY OF GOVERNMENT CORNER

Page No. 95

County of Anoka

State of Minnesota

Meander Corner of Sec. 25 Township 33 Range 23 (Meander Corner No. 15—on east line of section)

CORNER HISTORY:

June 15, 1960 - Found concrete up 0.6'± and established ties to monument.

September 25, 1964 - Found concrete monument and updated ties.

July 19, 1967 - Found concrete monument up 0.5'± and updated ties.

August 19, 1974 - Found concrete monument and updated ties.

July 18, 1977 - Found concrete monument and updated ties.

June 12, 1981 - Found concrete monument and updated ties.

July 3, 1984 - Found concrete monument and updated ties.

June 2, 1987 - Found concrete monument and updated ties.

August 26, 1992 - Found concrete monument and updated ties.

December 7, 1994 - Found concrete monument and updated ties.

July 9, 2002 - Found concrete monument and updated ties.

July 15, 2002 - Established NAD 1983 (1996 adj.) Anoka County project coordinates by static GPS methods.

February 22, 2013 - Found concrete monument (top chipped) down 0.2'± and 0.5'± west of fence line. Updated ties.

May 8, 2018 - Found concrete monument (top chipped) down 0.2'± and 0.5'± west of fence line. Updated ties.

October 4, 2021 - Found concrete monument down 0.2'± and updated ties.