

# CERTIFICATE OF LOCATION OF GOVERNMENT CORNER

County of Anoka

State of Minnesota

## Meander Corner of Sec. 25 Township 33 Range 23

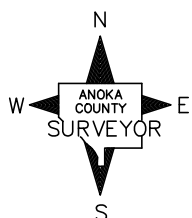
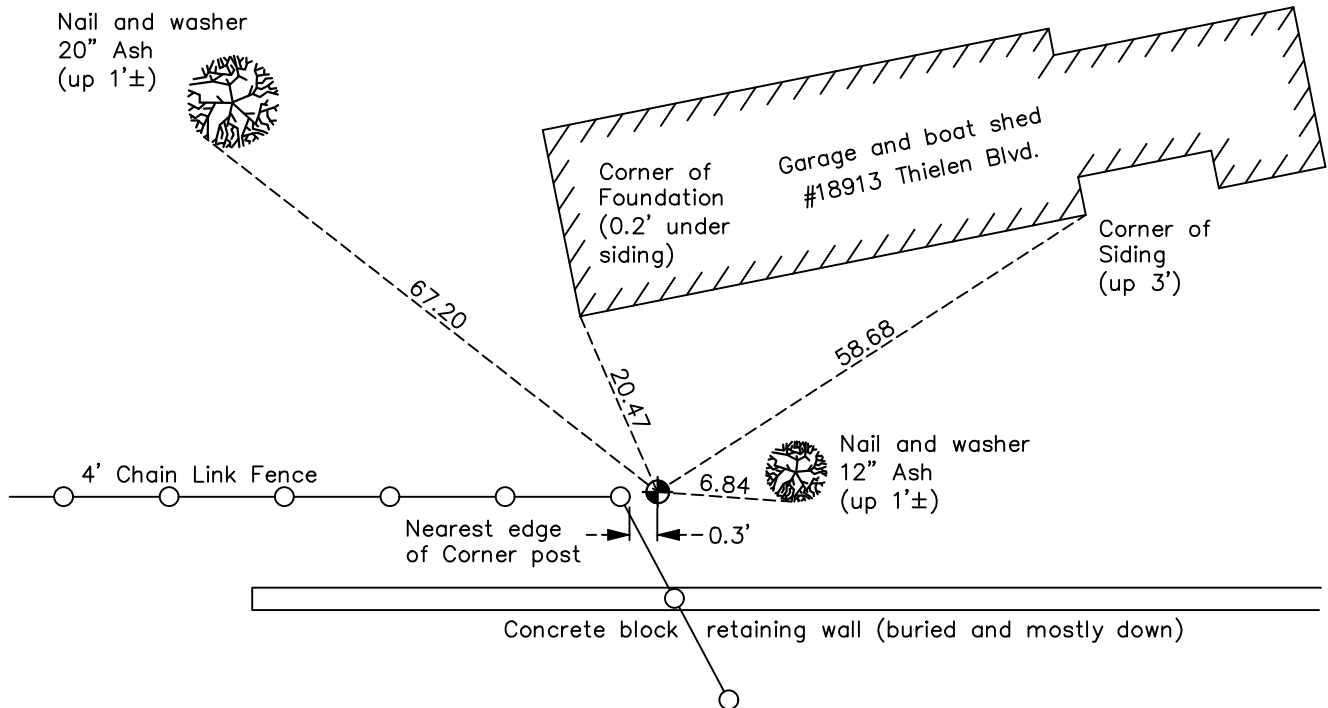
(Meander Corner No. 13—on south line of section)

On the 19th day of October, 1962, the described corner was evidenced by a concrete monument found by John Oliver

and to perpetuate the location of said corner, at the exact location thereof, a permanent marker was placed consisting of a cast iron monument

AND on the 8th day of October, 2021, said permanent marker was found down 1'± against edge of concrete base for 2" dia. fence post. Updated the ties.

Updated reference ties are as shown below.



Revision Date  
01/20/2022

N.A.D. 1983 Coordinates  
(1996 Adjustment)

County Project Coordinates	
Northing	<u>200912.5716</u>
Easting	<u>528338.6447</u>
Date	<u>6/11/02</u>

I hereby certify that this United States public land survey monument record is correct and complete to the best of my knowledge and belief.

*David Zieglmeier* Date 2/1/23

David Zieglmeier Anoka County Surveyor  
Minnesota License Number 46179

# HISTORY OF GOVERNMENT CORNER

Page No. 96

County of Anoka

State of Minnesota

## Meander Corner of Sec. 25 Township 33 Range 23 (Meander Corner No. 13—on south line of section)

### **CORNER HISTORY:**

October 19, 1962 - Set cast iron monument flush w/iron fence post 0.5'± south of monument. Established ties to monument.

September 25, 1964 - Found cast iron monument and updated ties.

July 15, 1970 - Reset cast iron monument down 0.4'± and updated ties.

July 18, 1977 - Found cast iron monument and updated ties.

June 12, 1981 - Found cast iron monument and updated ties.

July 9, 1984 - Found cast iron monument and updated ties.

June 3, 1987 - Found cast iron monument and updated ties.

August 18, 1992 - Found cast iron monument and updated ties.

June 11, 2002 - Found cast iron monument and updated ties. Established NAD 1983 (1996 adj.) Anoka County project coordinates by static GPS methods.

April 10, 2013 - Found cast iron monument down 1'±. Verified position by VRS GPS methods. Updated ties.

June 5, 2018 - Found cast iron monument down 1'± and updated ties.

October 8, 2021 - Found cast iron monument down 1'± and updated ties.