

CERTIFICATE OF LOCATION OF GOVERNMENT CORNER

County of Anoka

State of Minnesota

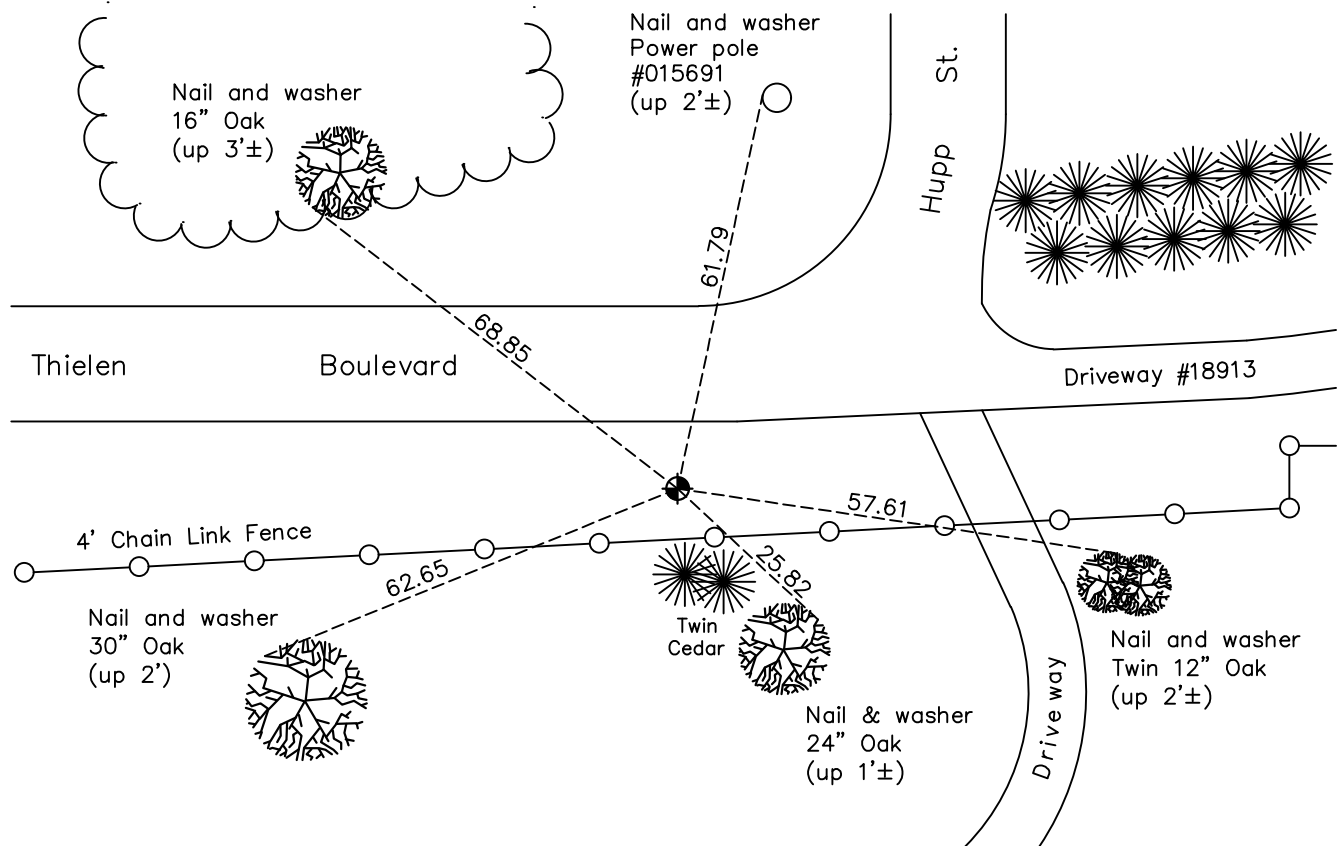
Southwest Corner of Sec. 25 Township 33 Range 23 (Southwest corner of Gov't. Lot 7)

On the 19th day of October, 1962, the described corner was evidenced by a cast iron monument

and to perpetuate the location of said corner, at the exact location thereof, a permanent marker was placed consisting of a cast iron monument

AND on the 8th day of October, 2021, said permanent marker was found down 0.1'± and the ties were updated.

Updated reference ties are as shown below.



Revision Date

01/20/2022

N.A.D. 1983 Coordinates
(1996 Adjustment)

County Project Coordinates	
Northing	<u>200915.7209</u>
Easting	<u>527868.9066</u>
Date	<u>6/11/02</u>

I hereby certify that this United States public land survey monument record is correct and complete to the best of my knowledge and belief.

David Zieglmeier Date 2/1/23

David Zieglmeier Anoka County Surveyor
Minnesota License Number 46179

HISTORY OF GOVERNMENT CORNER

Page No. 97

County of Anoka

State of Minnesota

Southwest Corner of Sec. 25 Township 33 Range 23 (Southwest corner of Gov't. Lot 7)

CORNER HISTORY:

October 19, 1962 - Set cast iron monument flush. Established ties to monument.

September 29, 1964 - Found cast iron monument and updated ties.

June 9, 1965 - Found cast iron monument and updated ties.

July 10, 1970 - Found cast iron monument and updated ties.

August 15, 1974 - Found cast iron monument and updated ties.

July 19, 1977 - Found cast iron monument and updated ties.

June 18, 1981 - Found cast iron monument and updated ties.

July 5, 1984 - Found cast iron monument and updated ties.

June 3, 1987 - Found cast iron monument and updated ties.

August 12, 1992 - Found cast iron monument and updated ties.

July 31, 1997 - Found cast iron monument and updated ties.

June 11, 2002 - Found cast iron monument and updated ties. Established NAD 1983 (1996 adj.) Anoka County project coordinates by static GPS methods.

February 22, 2013 - Found cast iron monument down 1.5'± and updated ties.

May 30, 2013 - Found cast iron monument down and raised up to 0.2' below surface. Updated ties.

June 5, 2018 - Found monument missing. Set temporary 1/2" iron pipe w/cap using corner ties.

April 8, 2019 - Found temporary 1/2" iron pipe and verified position by static GPS methods.

April 23, 2019 - Replaced 1/2" iron pipe with a cast iron monument down 0.3'± using static GPS methods. Verified position by VRS GPS methods. Updated ties.

October 8, 2021 - Found cast iron monument down 0.1'±, verified position by VRS GPS method and updated ties.