

CERTIFICATE OF LOCATION OF GOVERNMENT CORNER

County of Anoka

State of Minnesota

Meander Corner of Sec. 25 Township 33 Range 23

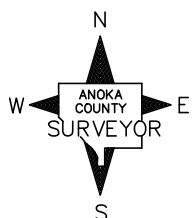
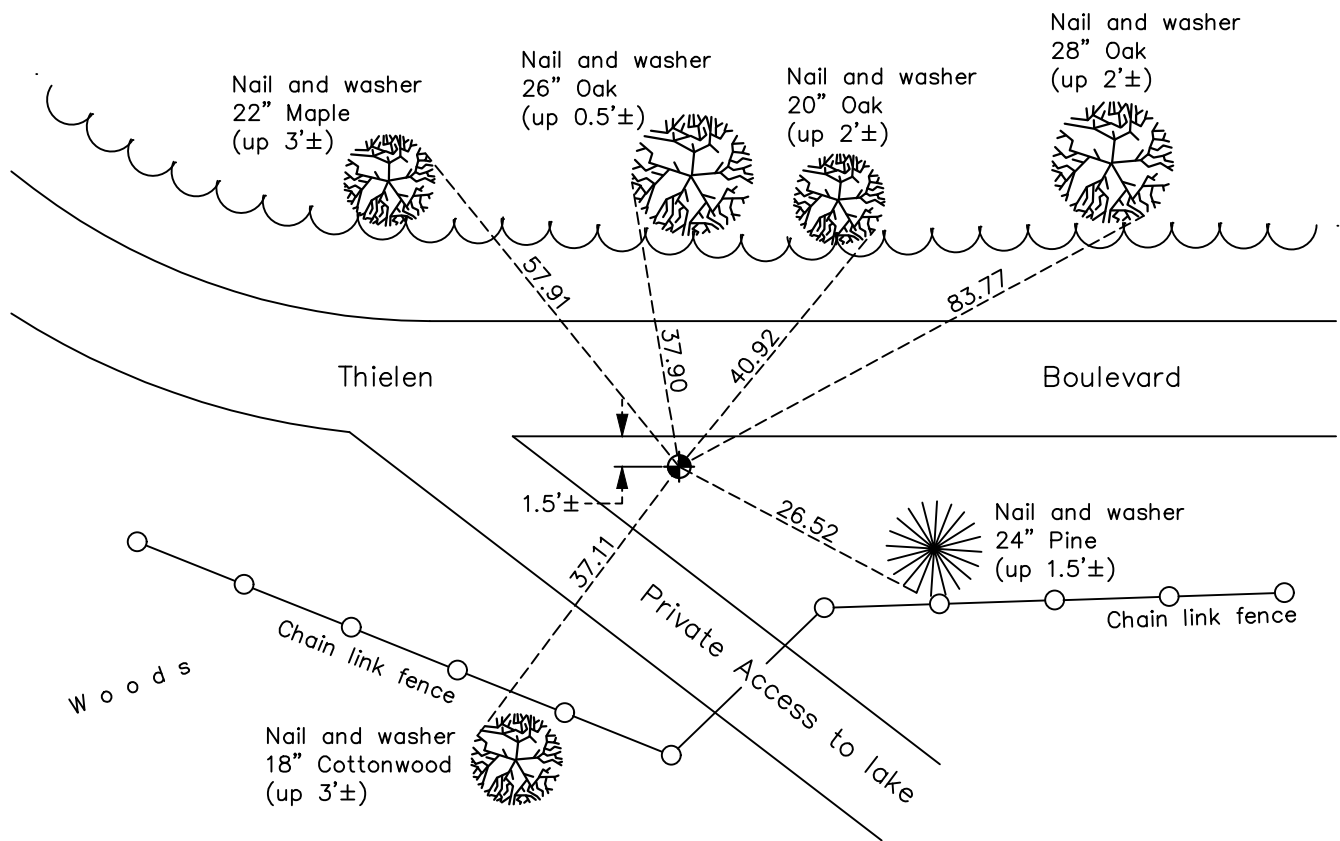
(Meander Corner No. 12)

On the 23rd day of April, 1971, the described corner was evidenced by a 1-1/2" red & white iron pipe

and to perpetuate the location of said corner, at the exact location thereof, a permanent marker was placed consisting of a cast iron monument

AND on the 8th day of October, 2021, said permanent marker was found down 2.0'± and and the ties were updated

Updated reference ties are as shown below.



Revision Date
01/20/2022

N.A.D. 1983 Coordinates
(1996 Adjustment)

County Project Coordinates	
Northing	<u>200917.3138</u>
Easting	<u>527515.4335</u>
Date	<u>6/11/02</u>

I hereby certify that this United States public land survey monument record is correct and complete to the best of my knowledge and belief.

David Zieglmeier Date 2/1/23

David Zieglmeier Anoka County Surveyor
 Minnesota License Number 46179

HISTORY OF GOVERNMENT CORNER

Page No. 98

County of Anoka

State of Minnesota

Meander Corner of Sec. 25 Township 33 Range 23 (Meander Corner No. 12)

CORNER HISTORY:

October 19, 1962 - Set 1-1/2" x 8' red and white iron pipe up 3.5'± and established ties to iron pipe.

September 25, 1964 - Found 1-1/2" red and white iron pipe and updated ties.

July 10, 1970 - Found 1-1/2" red and white iron pipe and updated ties.

April 23, 1971 - Found 1-1/2" red and white iron pipe, replaced with a cast iron monument and updated ties.

August 20, 1976 - Found cast iron monument and updated ties.

July 19, 1977 - Found cast iron monument and updated ties.

June 12, 1981 - Found cast iron monument and updated ties.

July 5, 1984 - Found cast iron monument and updated ties.

June 2, 1987 - Found cast iron monument and updated ties.

August 18, 1992 - Found cast iron monument and updated ties.

July 31, 1997 - Found cast iron monument and updated ties.

June 11, 2002 - Found cast iron monument down 2'± and updated ties. Established NAD 1983 (1996 adj.) Anoka County project coordinates by static GPS methods.

April 24, 2013 - Found cast iron monument down 2'± and updated ties.

June 5, 2018 - Found cast iron monument down 2'±. Verified position by VRS GPS methods. Updated ties.

October 8, 2021 - Found cast iron monument down 2'±. Verified position by VRS GPS methods. Updated ties.