

CERTIFICATE OF LOCATION OF GOVERNMENT CORNER

County of Anoka

State of Minnesota

Meander Corner of Sec. 25 Township 33 Range 23

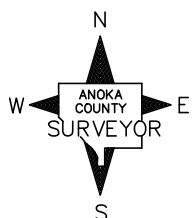
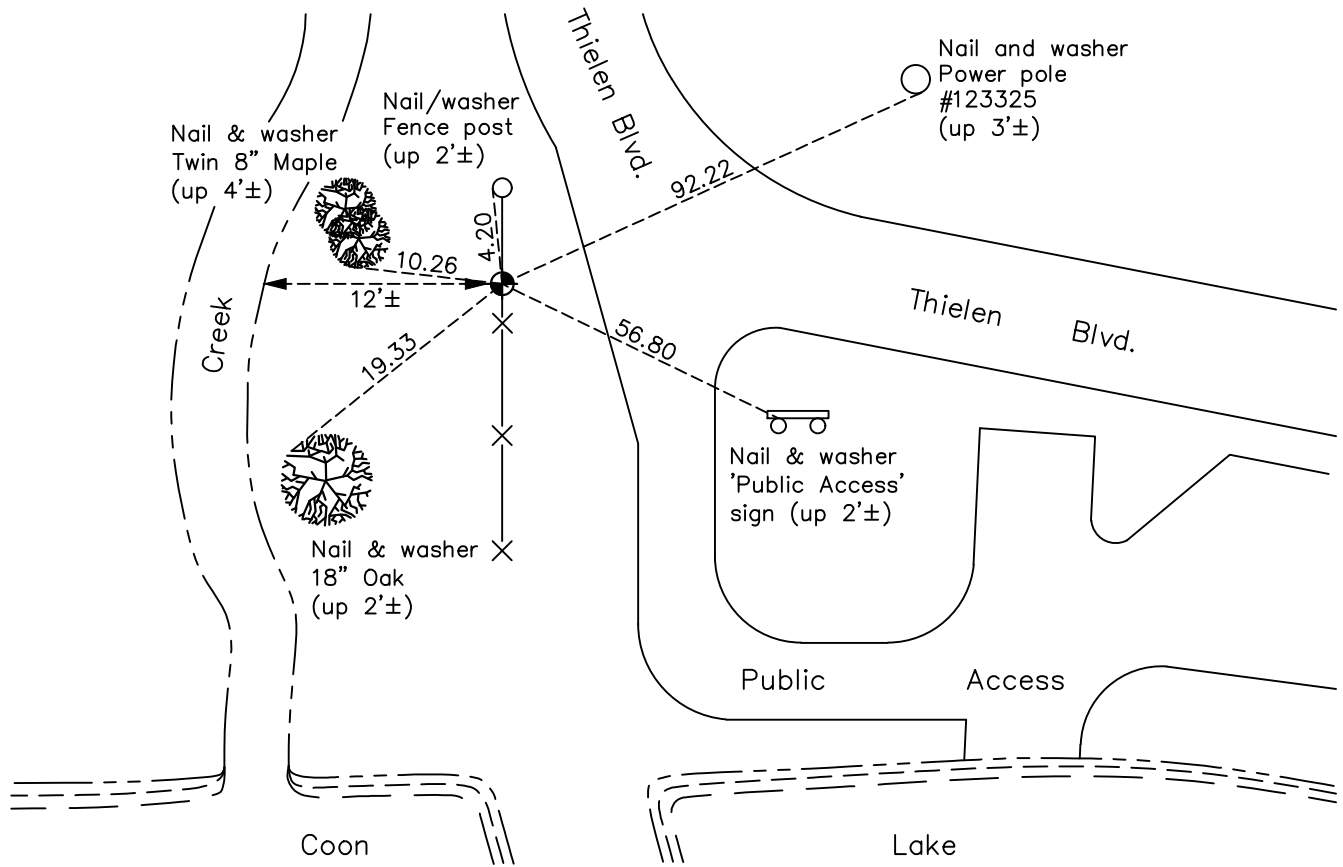
(Meander Corner No. 11—on west line of section)

On the 9th day of July, 1970, the described corner was evidenced by a 1" red and white iron pipe

and to perpetuate the location of said corner, at the exact location thereof, a permanent marker was placed consisting of a cast iron monument

AND on the 18th day of October, 2021, said permanent marker was found down 0.5'± and the ties were updated

Updated reference ties are as shown below.



Revision Date
01/20/2022

N.A.D. 1983 Coordinates
(1996 Adjustment)

County Project Coordinates	
Northing	<u>201220.6394</u>
Easting	<u>526543.6953</u>
Date	<u>6/11/02</u>

I hereby certify that this United States public land survey monument record is correct and complete to the best of my knowledge and belief.

David Zieglmeier Date 2/1/23

David Zieglmeier Anoka County Surveyor
 Minnesota License Number 46179

HISTORY OF GOVERNMENT CORNER

Page No. 98A

County of Anoka

State of Minnesota

Meander Corner of Sec. 25 Township 33 Range 23 (Meander Corner No. 11—on west line of section)

CORNER HISTORY:

October 18, 1962 - Set 1" x 9' red and white iron pipe up 4'±. Corner ties to be taken in winter.

December 28, 1962 - Found 1" red and white iron pipe and established tie to monument.

September 25, 1964 - Found 1" red and white iron pipe and updated ties.

July 9, 1970 - Found 1" red and white iron pipe and replaced with cast iron monument down 0.3'±. Updated ties.

August 15, 1974 - Found cast iron monument and updated ties.

July 19, 1977 - Found cast iron monument and updated ties.

June 12, 1981 - Found cast iron monument and updated ties.

June 22, 1984 - Found cast iron monument and updated ties.

June 2, 1987 - Found cast iron monument and updated ties.

August 19, 1992 - Found cast iron monument and updated ties.

August 19, 1997 - Found cast iron monument and updated ties.

June 11, 2002 - Found cast iron monument and updated ties. Established NAD 1983 (1996 adj.) Anoka County project coordinates by static GPS methods.

December 5, 2012 - Found cast iron monument down 0.5'± and updated ties.

June 5, 2018 - Found cast iron monument down 0.5'± and updated ties.

October 18, 2021 - Found cast iron monument down 0.5'±, verified position by VRS GPS method and updated ties.