

# CERTIFICATE OF LOCATION OF GOVERNMENT CORNER

County of Anoka

State of Minnesota

## Meander Corner of Sec. 35 Township 33 Range 23

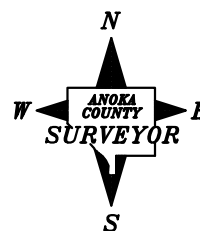
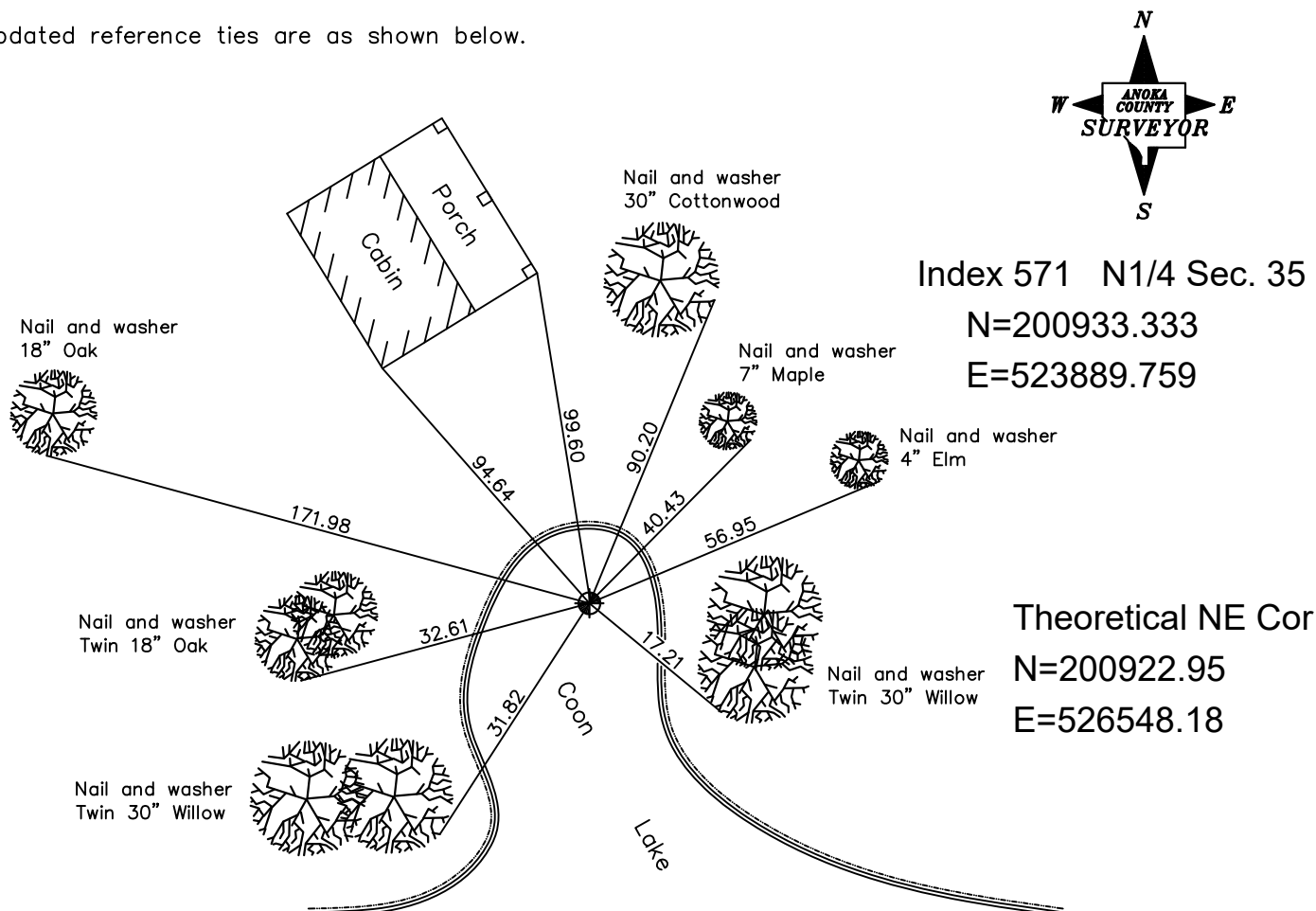
( Meander Cor. No. 10—On north line of section)

On the 13th day of June, 1960, the described corner was evidenced by a concrete monument

and to perpetuate the location of said corner, at the exact location thereof, a permanent marker was placed consisting of a cast iron monument

AND on the 20th day of June, 1985, said permanent marker was not found

Updated reference ties are as shown below.



Index 571 N1/4 Sec. 35

N=200933.333

E=523889.759

Theoretical NE Cor

N=200922.95

E=526548.18

### Computed DZ

N=200925.83 E=525809.13

N.A.D. 1983 Coordinates  
(1996 Adjustment)

County Project Coordinates

Northing not available

Easting \_\_\_\_\_

Date \_\_\_\_\_

Revised date

6/12/81
7/06/84
6/20/85

I hereby certify that this United States public land survey monument record is correct and complete to the best of my knowledge and belief.

\_\_\_\_\_ Date \_\_\_\_\_

\_\_\_\_\_, Anoka County Surveyor

Minnesota License Number \_\_\_\_\_