

CERTIFICATE OF LOCATION OF GOVERNMENT CORNER

County of Anoka

State of Minnesota

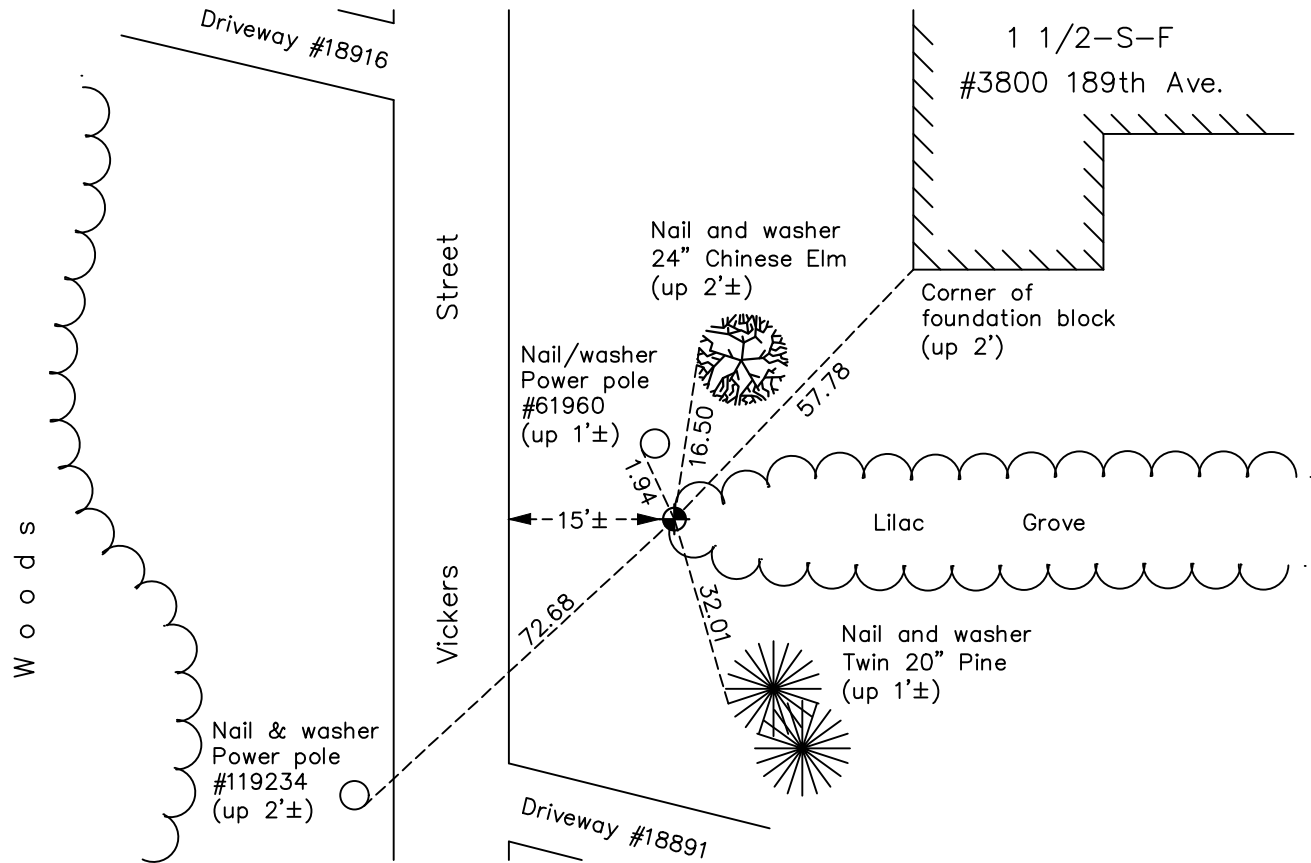
North 1/4 Corner of Sec. 35 Township 33 Range 23

On the 17th day of August, 1964, the described corner was evidenced by a 1' saw axle shaft

and to perpetuate the location of said corner, at the exact location thereof, a permanent marker was placed consisting of a cast iron monument

AND on the 19th day of October, 2021, said permanent marker was found down 0.5'± and the ties were updated. Monument is close to property line.

Updated reference ties are as shown below.



Revision Date

01/20/2022

N.A.D. 1983 Coordinates
(1996 Adjustment)

County Project Coordinates	
Northing	<u>200933.3331</u>
Easting	<u>523889.7593</u>
Date	<u>6/20/02</u>

I hereby certify that this United States public land survey monument record is correct and complete to the best of my knowledge and belief.

David Zieglmeier Date 2/1/23

David Zieglmeier Anoka County Surveyor
Minnesota License Number 46179

HISTORY OF GOVERNMENT CORNER

Page No. 100

County of Anoka

State of Minnesota

North 1/4 Corner of Sec. 35 Township 33 Range 23

CORNER HISTORY:

July 28, 1948 - Jackson found a concrete monument and updated ties.

December 1961 - Concrete monument graded out.

August 17, 1964 - Found 1" saw axle shaft down 1', drove axle down and set a cast iron monument on top flush. Established ties to monument.

June 24, 1970 - Found cast iron monument down 1'± and updated ties.

July 20, 1977 - Found cast iron monument and updated ties.

June 18, 1981 - Found cast iron monument and updated ties.

June 18, 1984 - Found cast iron monument and updated ties.

June 3, 1987 - Found cast iron monument and updated ties.

April 2, 1991 - Found cast iron monument and updated ties.

August 17, 1992 - Found cast iron monument and updated ties.

August 1, 1997 - Found cast iron monument and updated ties.

June 11, 2002 - Found cast iron monument and updated ties.

June 20, 2002 - Established NAD 1983 (1996 adj.) Anoka County project coordinates by static GPS methods.

December 4, 2012 - Found cast iron monument, verified position by VRS GPS methods and updated ties.

June 6, 2018 - Found cast iron monument and updated the ties.

October 19, 2021 - Found cast iron monument down 0.5'±, verified position by VRS GPS method and updated the ties.