

CERTIFICATE OF LOCATION OF GOVERNMENT CORNER

County of Anoka

State of Minnesota

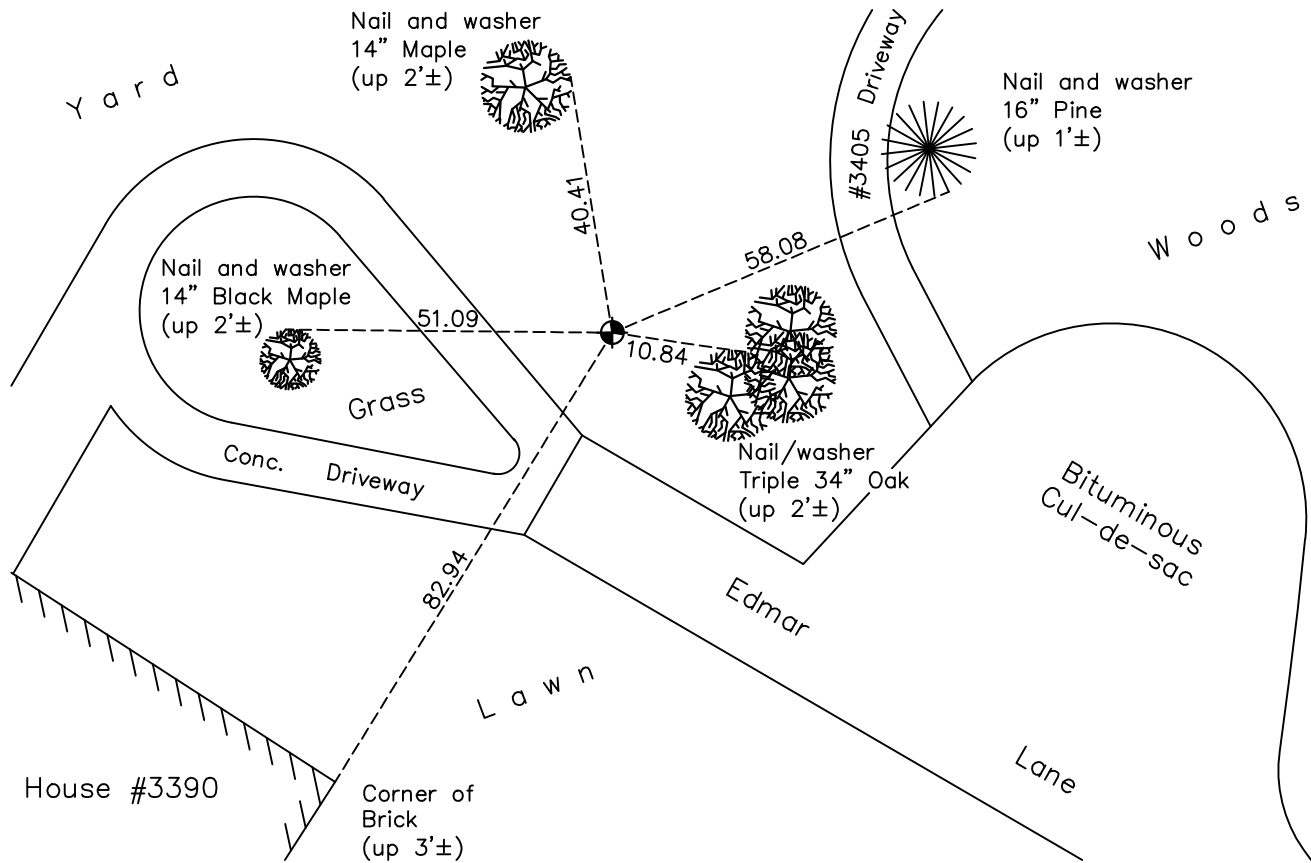
Southwest Corner of Sec. 26 Township 33 Range 23

On the 12th day of August, 1974, the described corner was evidenced by a concrete monument

and to perpetuate the location of said corner, at the exact location thereof, a permanent marker was placed consisting of a cast iron monument

AND on the 8th day of October, 2021, said permanent marker was found down 0.2'± and Updated ties.

Updated reference ties are as shown below.



Revision Date

01/21/2022

N.A.D. 1983 Coordinates
(1996 Adjustment)

County Project Coordinates	
Northing	<u>200986.8807</u>
Easting	<u>521232.6025</u>
Date	<u>6/18/02</u>

I hereby certify that this United States public land survey monument record is correct and complete to the best of my knowledge and belief.

David Zieglmeier Date 2/1/23

David Zieglmeier Anoka County Surveyor
Minnesota License Number 46179

HISTORY OF GOVERNMENT CORNER

Page No. 102

County of Anoka

State of Minnesota

Southwest Corner of Sec. 26 Township 33 Range 23

CORNER HISTORY:

June 13, 1960 - Found concrete monument broken off up 0.1' with a iron pipe on the south side and established ties to monument.

September 25, 1964 - Found concrete monument and updated ties.

June 24, 1970 - Found concrete monument and updated ties.

August 12, 1974 - Found concrete monument, replaced with a cast iron monument and updated ties.

June 19, 1981 - Found cast iron monument and updated ties.

June 18, 1984 - Found cast iron monument and updated ties.

June 3, 1987 - Found cast iron monument and updated ties.

August 17, 1992 - Found cast iron monument and updated ties.

August 10, 2000 - Found cast iron monument and updated ties.

June 18, 2002 - Found cast iron monument, established NAD 1983 (1996 adj.) Anoka County project coordinates by static GPS methods and updated ties.

December 3, 2012 - Found cast iron monument, verified position by VRS GPS methods and updated ties.

May 23, 2018 - Found cast iron monument broken. Checked position by VRS GPS methods and checked corner ties to center fin.

April 23, 2019 - Replaced broken monument with a new cast iron monument down 0.3'± using static GPS methods. Updated ties.

October 8, 2021 - Found cast iron monument and updated ties.