

CERTIFICATE OF LOCATION OF GOVERNMENT CORNER

County of Anoka

State of Minnesota

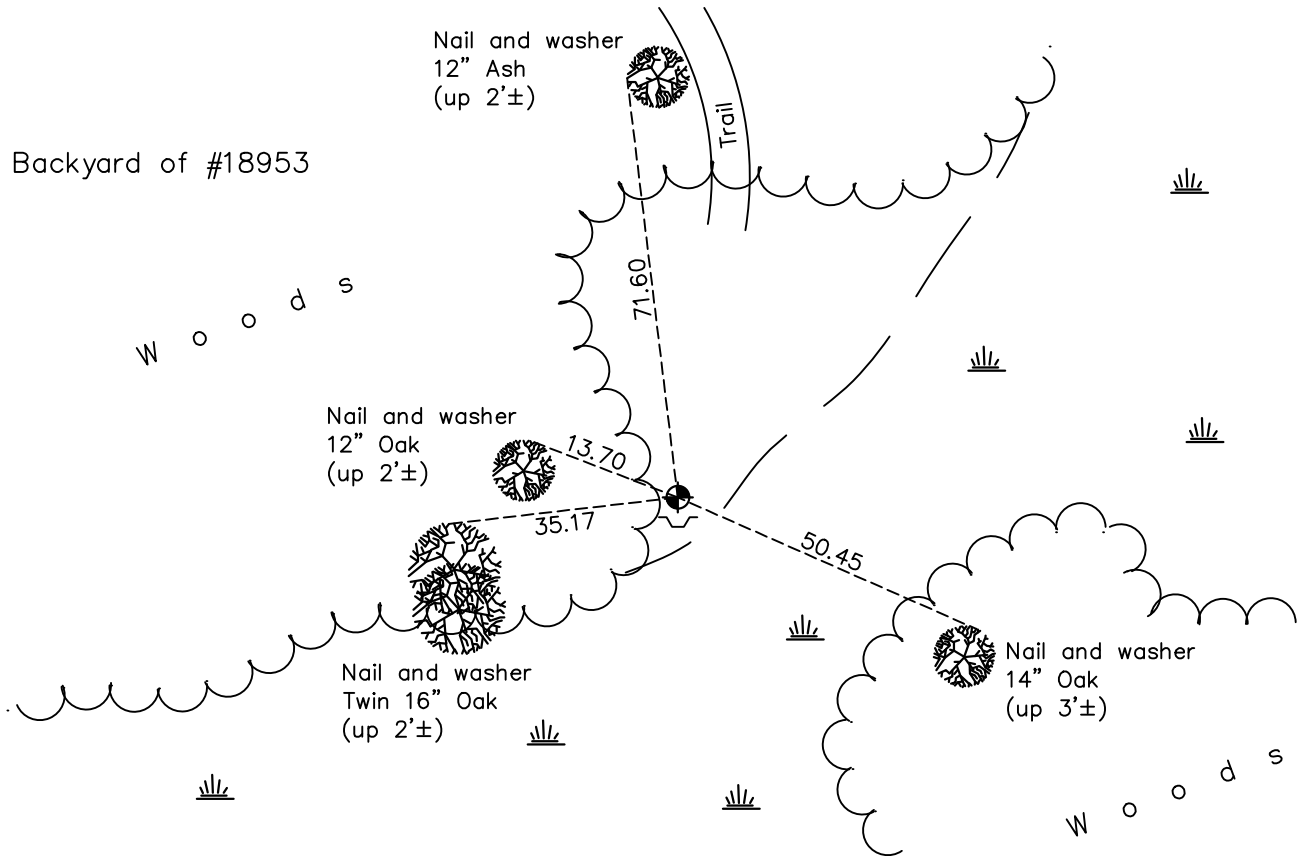
Northeast Corner of Sec. 33 Township 33 Range 23

On the 24th day of April, 2019, the described corner was evidenced by a cast iron monument

and to perpetuate the location of said corner, at the exact location thereof, a permanent marker was placed consisting of a 2"x2"x7' steel Telspar monument with punch marked cap with a sign and post on the south side

AND on the 8th day of October, 2021, said permanent marker was found 2" sq. steel Telspar monument w/ punchmarked cap. Updated ties.

Updated reference ties are as shown below.



Revision Date
 01/21/2022

N.A.D. 1983 Coordinates
 (1996 Adjustment)

County Project Coordinates	
Northing	<u>201015.4264</u>
Easting	<u>515920.3413</u>
Date	<u>6/20/02</u>

I hereby certify that this United States public land survey monument record is correct and complete to the best of my knowledge and belief.
David Zieglmeier Date 2/1/23
 David Zieglmeier Anoka County Surveyor
 Minnesota License Number 46179

HISTORY OF GOVERNMENT CORNER

Page No. 103

County of Anoka

State of Minnesota

Northeast Corner of Sec. 33 Township 33 Range 23

CORNER HISTORY:

September 26, 1961 - Found 1/2" iron pipe set by Bob Knudsen, replaced with a cast iron monument up 0.5' and established ties to monument.

July 8, 1970 - Found cast iron monument up 0.3'± and updated ties.

August 19, 1974 - Found cast iron monument and updated ties.

July 21, 1977 - Found cast iron monument and updated ties.

June 19, 1984 - Found cast iron monument and updated ties.

June 4, 1987 - Found cast iron monument and updated ties.

June 20, 2002 - Found cast iron monument, established NAD 1983 (1996 adj.) Anoka County project coordinates by static GPS methods and updated ties.

December 5, 2012 - Found cast iron monument up 0.2'± and updated ties.

May 31, 2018 - Found cast iron monument up 0.5'± and leaning westerly in need of reset.

April 24, 2019 - Removed cast iron monument. Set 2" x 2" x 7' steel Telspar monument w/punch marked cap using static GPS methods. Verified position by VRS GPS methods. Updated ties. Sign & post on the south side.

October 8, 2021 - Found 2"x2"x7' Sq Steel Telspar w/ punch marked cap, verified position by VRS GPS method and updated ties.