

# CERTIFICATE OF LOCATION OF GOVERNMENT CORNER

County of Anoka

State of Minnesota

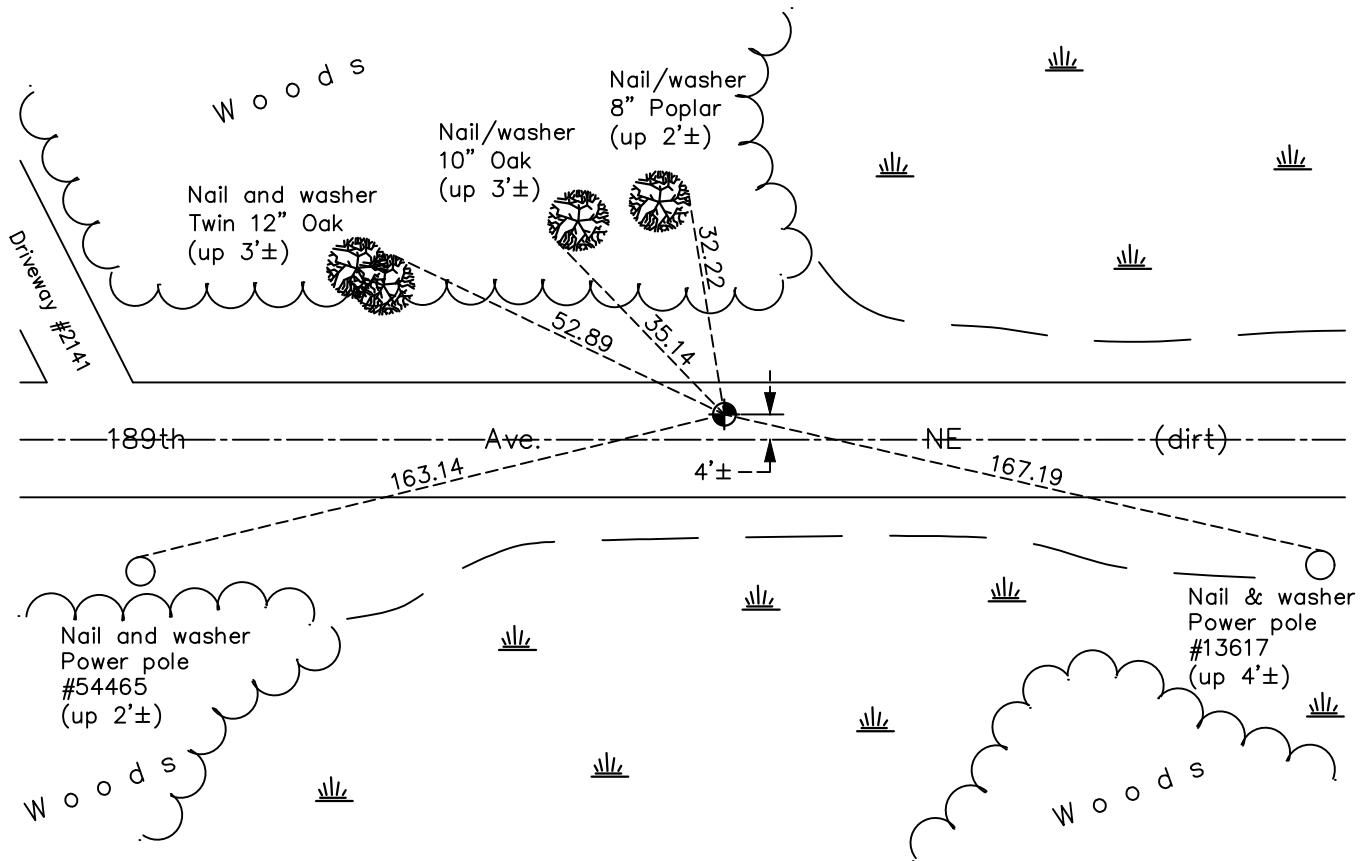
## North 1/4 Corner of Sec. 33 Township 33 Range 23

On the 8th day of July, 1970, the described corner was evidenced by a 1/2" iron pipe set from a found Tamarack stake

and to perpetuate the location of said corner, at the exact location thereof, a permanent marker was placed consisting of a cast iron monument

AND on the 6th day of October, 2021, said permanent marker was found down 0.4'± and the ties were updated

Updated reference ties are as shown below.



Revision Date  
01/21/2022

N.A.D. 1983 Coordinates  
 (1996 Adjustment)

County Project Coordinates	
Northing	<u>201033.3603</u>
Easting	<u>513253.3968</u>
Date	<u>6/18/02</u>

I hereby certify that this United States public land survey monument record is correct and complete to the best of my knowledge and belief.

*David Zieglmeier* Date 2/1/23

David Zieglmeier Anoka County Surveyor  
 Minnesota License Number 46179

# HISTORY OF GOVERNMENT CORNER

Page No. 104

County of Anoka

State of Minnesota

## North 1/4 Corner of Sec. 33 Township 33 Range 23

### **CORNER HISTORY:**

September 26, 1961 - Found old Tamarack stake down 0.5' in dirt road and replaced with 1/2" iron pipe down 0.5'±. Established ties to iron pipe.

July 8, 1970 - Found iron pipe bent west 0.2'± and replaced with cast iron monument down 0.6'±. Updated ties.

August 12, 1974 - Found cast iron monument and updated ties.

July 20, 1977 - Found cast iron monument and updated ties.

June 11, 1981 - Found cast iron monument and updated ties.

June 19, 1984 - Found cast iron monument and updated ties.

June 4, 1987 - Found cast iron monument and updated ties.

August 12, 1992 - Found cast iron monument and updated ties.

July 31, 1997 - Found cast iron monument and updated ties.

June 23, 2000 - Found cast iron monument and updated ties.

June 18, 2002 - Found cast iron monument and updated ties. Established NAD 1983 (1996 adj.) Anoka County project coordinates by static GPS methods.

December 4, 2012 - Found cast iron monument down 0.2'±. Verified position by VRS GPS methods. Updated ties.

May 31, 2018 - Found cast iron monument down 0.2'±. Verified position by VRS GPS methods. Updated ties.

October 6, 2021 - Found cast iron monument down 0.4'±. Verified position by VRS GPS methods. Updated ties.