

CERTIFICATE OF LOCATION OF GOVERNMENT CORNER

County of Anoka

State of Minnesota

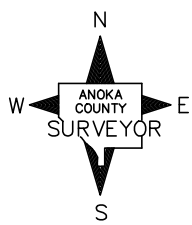
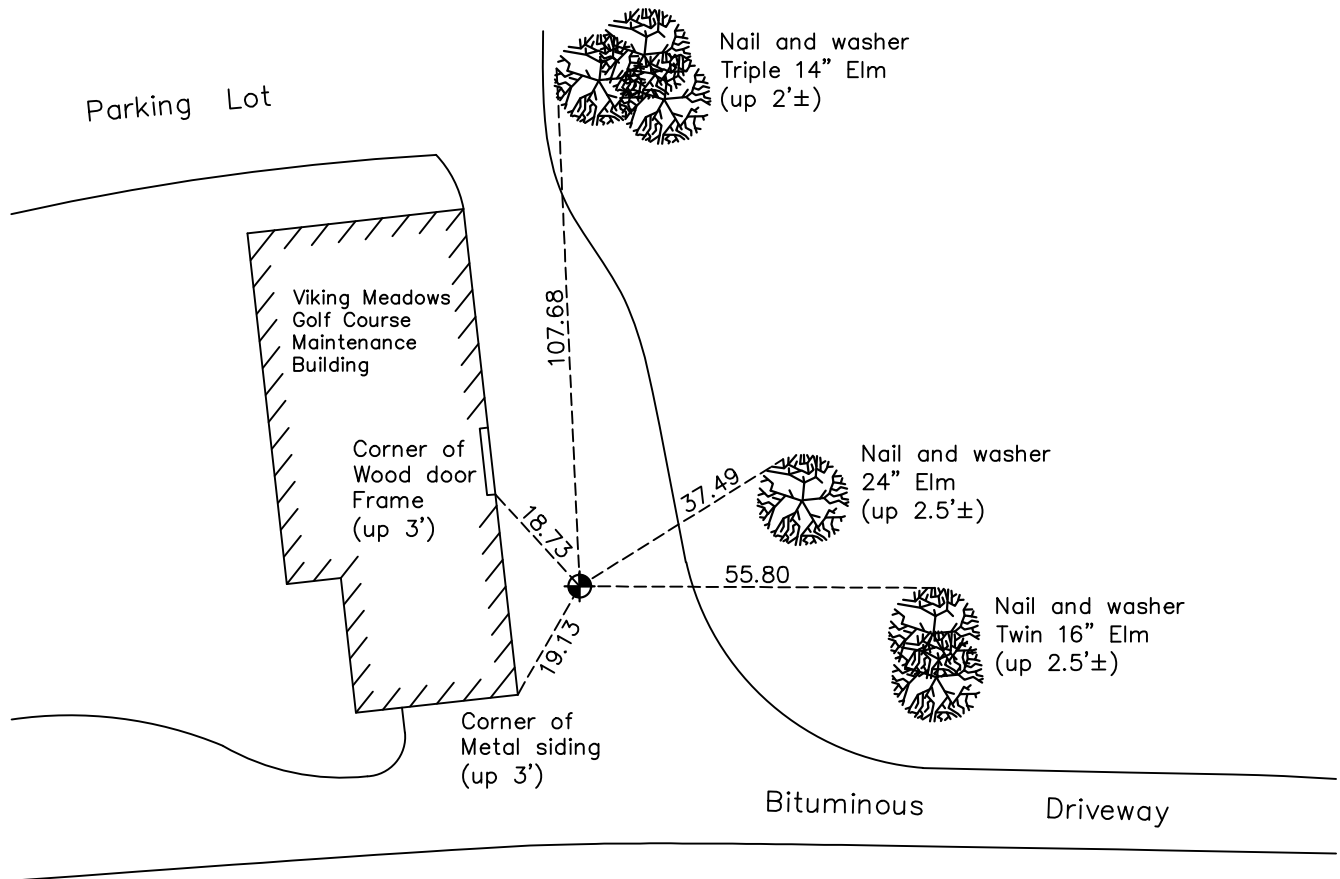
Northeast Corner of Sec. 32 Township 33 Range 23

On the 1st day of November, 1963, the described corner was evidenced by area resurvey

and to perpetuate the location of said corner, at the exact location thereof, a permanent marker was placed consisting of a cast iron monument

AND on the 6th day of October, 2021, said permanent marker was found up 0.1'± and updated ties.

Updated reference ties are as shown below.



Revision Date
 01/21/2022

N.A.D. 1983 Coordinates
 (1996 Adjustment)

County Project Coordinates	
Northing	<u>201015.6014</u>
Easting	<u>510591.9801</u>
Date	<u>6/20/02</u>

I hereby certify that this United States public land survey monument record is correct and complete to the best of my knowledge and belief.
David Zieglmeier Date 2/1/23
 David Zieglmeier Anoka County Surveyor
 Minnesota License Number 46179

HISTORY OF GOVERNMENT CORNER

Page No. 105

County of Anoka

State of Minnesota

Northeast Corner of Sec. 32 Township 33 Range 23

CORNER HISTORY:

November 1, 1963 - Set cast iron monument flush using area resurvey and established ties to monument.

July 8, 1970 - Found cast iron monument up, lowered monument to flush and updated ties.

August 13, 1974 - Found cast iron monument and updated ties.

July 21, 1977 - Found cast iron monument and updated ties.

June 16, 1981 - Found cast iron monument and updated ties.

June 19, 1984 - Found cast iron monument and updated ties.

June 11, 1987 - Found cast iron monument and updated ties.

August 17, 1988 - Found cast iron monument down 1'± and updated ties after building construction.

August 12, 1992 - Found cast iron monument and updated ties.

May 20, 1998 - Replaced solid cast iron monument under bituminous driveway with a removable top cast iron monument flush and updated ties.

June 23, 2000 - Found cast iron monument and updated ties.

June 20, 2002 - Found cast iron monument and updated ties. Established NAD 1983 (1996 adj.) Anoka County project coordinates by static GPS methods.

March 1, 2013 - Found cast iron monument. Verified position by VRS GPS methods. Updated ties.

April 20, 2018 - Found cast iron monument up 0.1'±. Verified position by VRS GPS methods. Updated ties.

April 29, 2019 - Lowered monument to be flush with blacktop driveway.

October 6, 2021 - Found cast iron monument up 0.1'±. Verified position by VRS GPS methods. Updated ties.