

CERTIFICATE OF LOCATION OF GOVERNMENT CORNER

County of Anoka

State of Minnesota

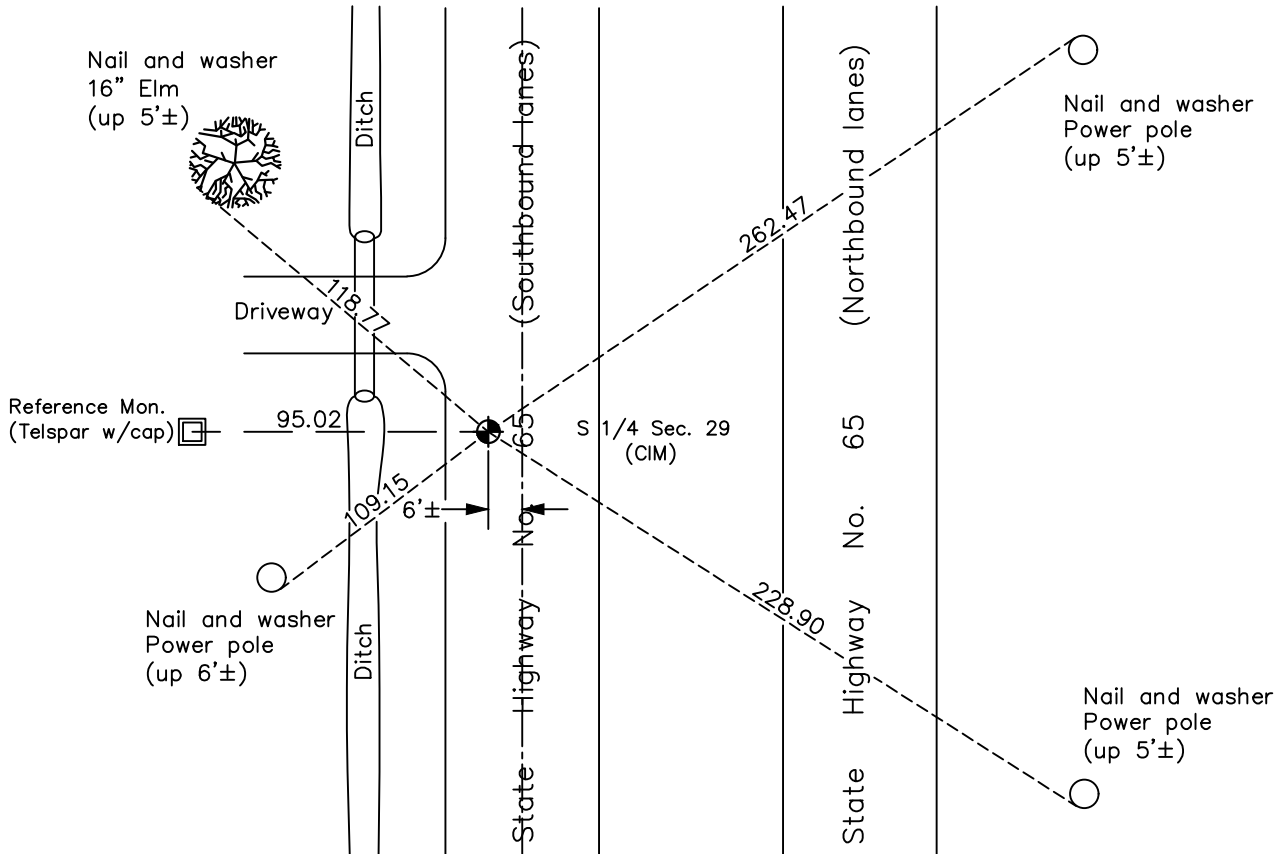
South 1/4 Corner of Sec. 29 Township 33 Range 23

On the 15th day of April, 1963, the described corner was evidenced by a P.K. nail

and to perpetuate the location of said corner, at the exact location thereof, a permanent marker was placed consisting of a cast iron monument

AND on the 7th day of June, 2023, said permanent marker was found cast iron monument without top, down 0.3'± under blacktop surface. Reference monument (index #1623) set 95' westerly

Updated reference ties are as shown below.



N.A.D. 1983 Coordinates
(1996 Adjustment)

| County Project Coordinates | |
|----------------------------|--------------------|
| Northing | <u>201054.3959</u> |
| Easting | <u>507925.9308</u> |
| Date | <u>9/14/06</u> |

Revision Date
7/31/2023

I hereby certify that this United States public land survey monument record is correct and complete to the best of my knowledge and belief.

David Zieglmeier Date 12/11/23

David Zieglmeier Anoka County Surveyor
Minnesota License Number 46179

REFERENCE MONUMENT FOR GOVERNMENT CORNER

Reference to County of Anoka State of Minnesota

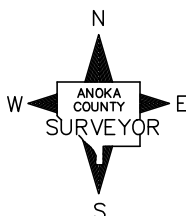
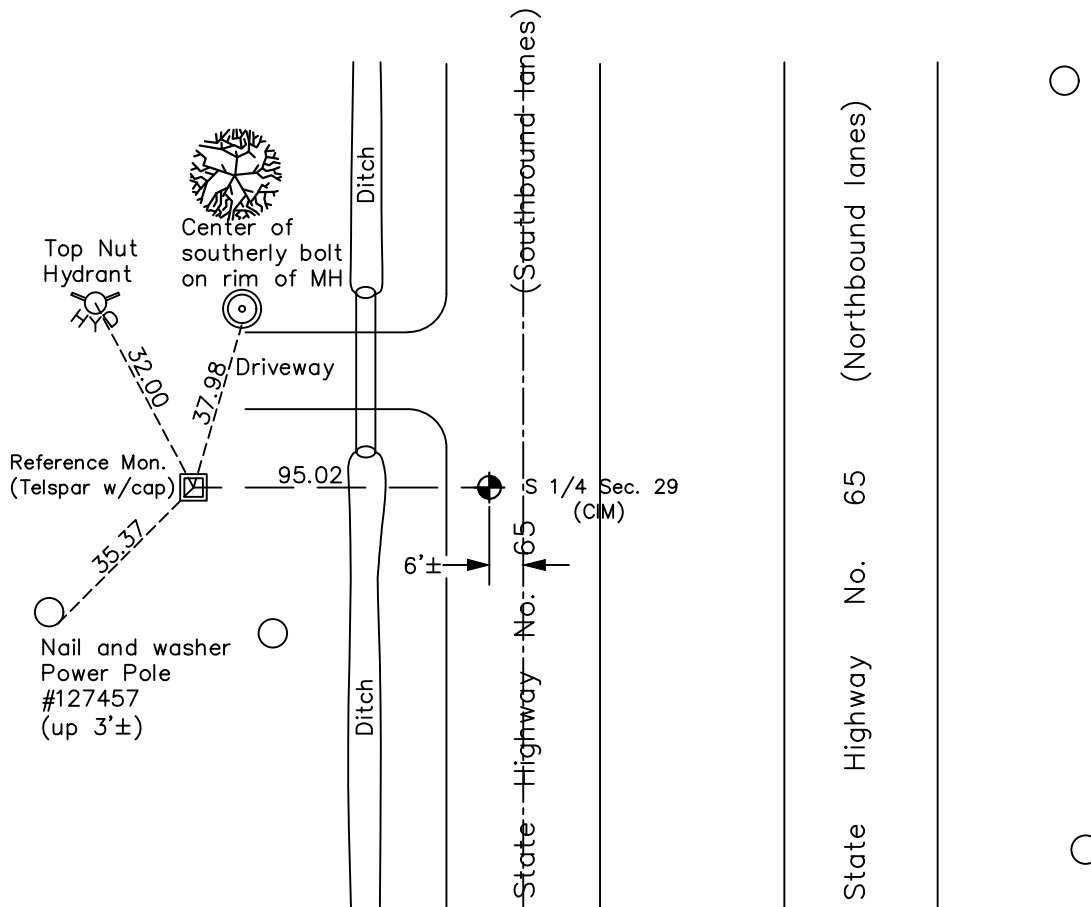
South 1/4 Corner of Sec. 29 Township 33 Range 23

On the 8th day of June, 2023, the described reference monument was evidenced by a computed position 95' westerly along the section line

and to reference the location of said corner, at the exact location thereof, a permanent marker was placed consisting of a 2" square steel Telspar with cap and punch mark set flush

AND on the 7th day of June, 2023, said permanent marker was set flush using RTK GPS method and ties were established to the reference monument

Updated reference ties are as shown below.



Revision Date
7/31/2023

REFERENCE MONUMENT
 N.A.D. 1983 (2011 Adj.)

| County Project Coordinates | |
|----------------------------|--------------------|
| Northing | <u>201055.4484</u> |
| Easting | <u>507830.9366</u> |
| Date | <u>6/7/2023</u> |

HISTORY OF GOVERNMENT CORNER

Page No. 106

County of Anoka

State of Minnesota

South 1/4 Corner of Sec. 29 Township 33 Range 23

CORNER HISTORY:

April 15, 1963 - Found P.K. nail from M.H.D. ties and established ties to P.K. nail.

September 9, 1969 - Replaced P.K. nail with a cast iron monument flush using corner ties and updated ties.

August 20, 1974 - Found cast iron monument and updated ties.

July 20, 1977 - Found cast iron monument and updated ties.

July 20, 1981 - Found cast iron monument and updated ties.

June 22, 1984 - Found cast iron monument and updated ties.

October 24, 1990 - Found cast iron monument under blacktop road and updated ties

September 24, 2006 - Found cast iron monument broken and set new cast iron monument flush, established NAD 1983 (1996 adj.) Anoka County project coordinates by static GPS methods and updated ties.

June 7, 2023 - Found cast iron monument down 0.3'± with top missing. Set **reference monument** to a computed position 95' westerly along the section line using RTK GPS method consisting of a 2" square steel Telspar with an aluminum cap and punch mark, set up 0.2'±. Established ties to the **reference monument**.