

CERTIFICATE OF LOCATION OF GOVERNMENT CORNER

County of Anoka

State of Minnesota

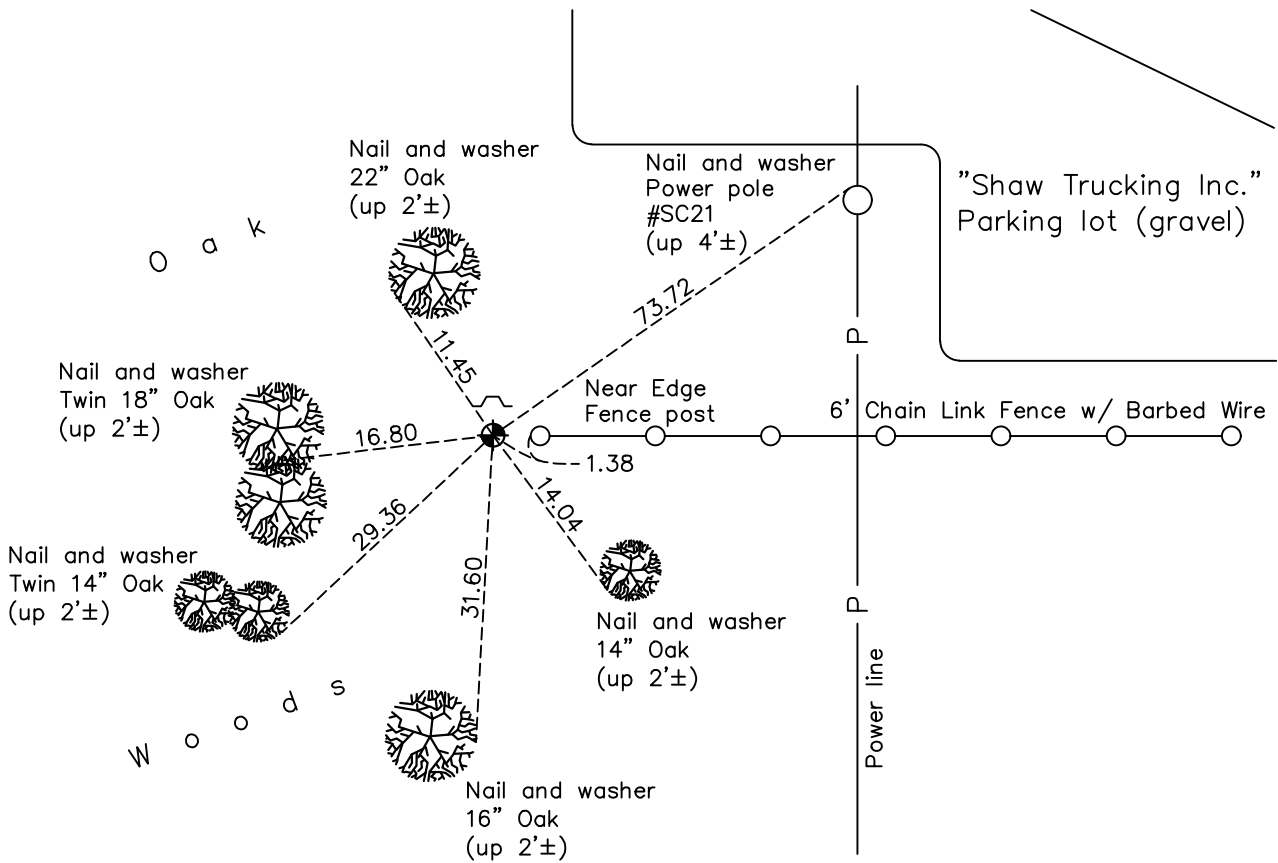
West 1/4 Corner of Sec. 32 Township 33 Range 23

On the 1st day of November, 1963, the described corner was evidenced by area resurvey

and to perpetuate the location of said corner, at the exact location thereof, a permanent marker was placed consisting of a cast iron monument with a sign and post on the north side

AND on the 26th day of October, 2021, said permanent marker was found flush and the ties were updated

Updated reference ties are as shown below.



N.A.D. 1983 Coordinates
(1996 Adjustment)

County Project Coordinates	
Northing	<u>198455.9156</u>
Easting	<u>505484.5722</u>
Date	<u>3/27/03</u>

Revision Date
01/21/2022

I hereby certify that this United States public land survey monument record is correct and complete to the best of my knowledge and belief.
David Zieglmeier Date 2/1/23
 David Zieglmeier Anoka County Surveyor
 Minnesota License Number 46179

HISTORY OF GOVERNMENT CORNER

County of Anoka

State of Minnesota

West 1/4 Corner of Sec. 32 Township 33 Range 23

CORNER HISTORY:

November 1, 1963 - Set cast iron monument flush using area resurvey and established ties to monument.

February 21, 1978 - Found cast iron monument and updated ties.

November 19, 1987 - Found cast iron monument and updated ties.

August 24, 1992 - Found cast iron monument and updated ties.

March 27, 2003 - Found cast iron monument and updated ties. Established NAD 1983 (1996 adj.) Anoka County project coordinates by static GPS methods.

January 15, 2013 - Found cast iron monument and updated ties.

May 3, 2018 - Found cast iron monument flush and updated ties.

October 26, 2021 - Found cast iron monument flush, verified position by VRS GPS method and updated ties.