

CERTIFICATE OF LOCATION OF GOVERNMENT CORNER

County of Anoka

State of Minnesota

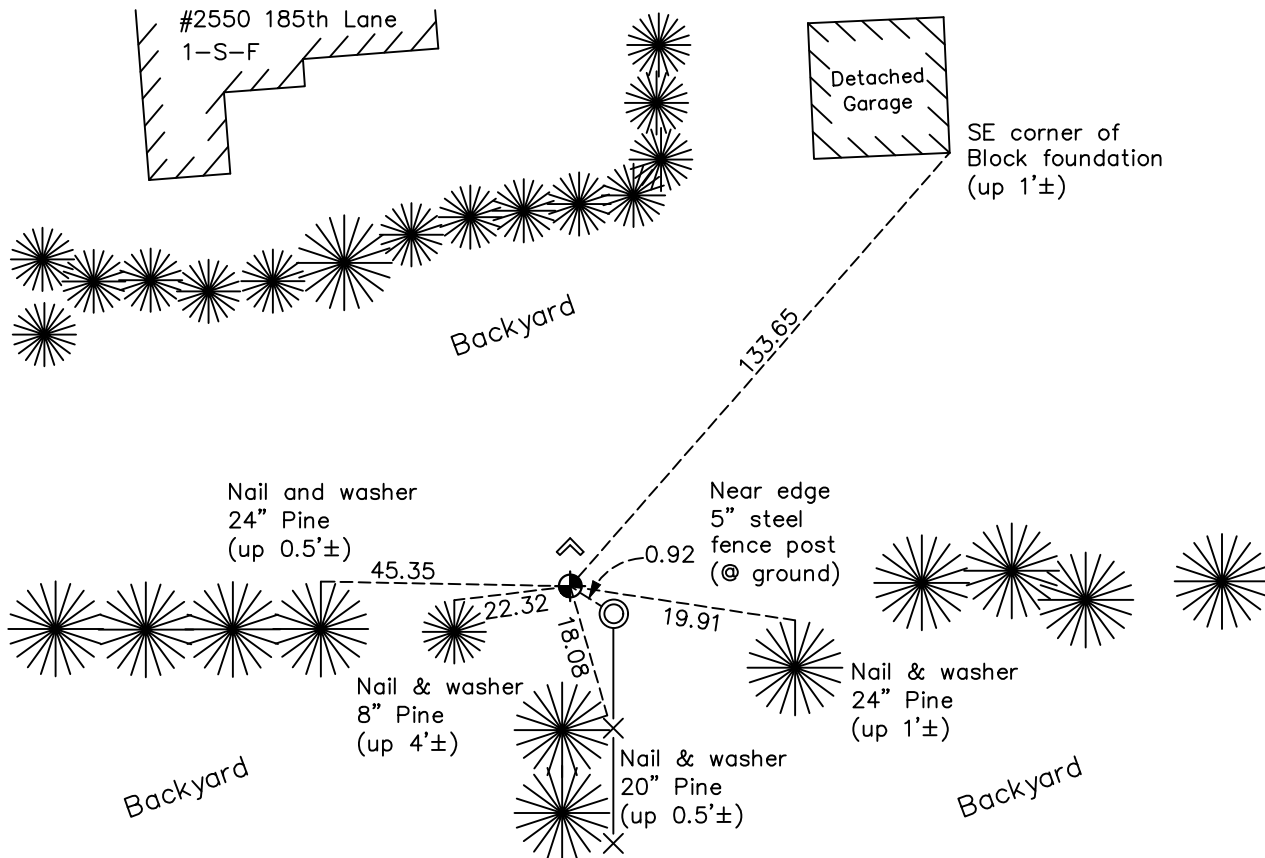
East 1/4 Corner of Sec. 33 Township 33 Range 23

On the 20th day of July, 1965, the described corner was evidenced by a 1 1/2" well point

and to perpetuate the location of said corner, at the exact location thereof, a permanent marker was placed consisting of a cast iron monument with an angle iron post on the north side

AND on the 1st day of November, 2021, said permanent marker was found flush and
the ties were updated

Updated reference ties are as shown below.



Revision Date
01/21/2022

N.A.D. 1983 Coordinates
 (1996 Adjustment)

County Project Coordinates	
Northing	<u>198369.1629</u>
Easting	<u>516099.1191</u>
Date	<u>6/20/02</u>

I hereby certify that this United States public land survey monument record is correct and complete to the best of my knowledge and belief.

David Zieglmeier Date 2/1/23

David Zieglmeier Anoka County Surveyor
 Minnesota License Number 46179

HISTORY OF GOVERNMENT CORNER

Page No. 113

County of Anoka

State of Minnesota

East 1/4 Corner of Sec. 33 Township 33 Range 23

CORNER HISTORY:

July 20, 1965 - Found 1-1/2" well point, set cast iron monument with 2" angle iron 1'± north of monument and up 4.5'±. Established ties to monument.

July 8, 1970 - Found cast iron monument up 0.1'± and updated ties.

August 14, 1974 - Found cast iron monument and updated ties.

July 21, 1977 - Found cast iron monument and updated ties.

August 18, 1981 - Found cast iron monument flush and updated ties.

June 21, 1984 - Found cast iron monument and updated ties.

June 4, 1987 - Found cast iron monument and updated ties.

August 18, 1992 - Found cast iron monument and updated ties.

August 18, 1997 - Found cast iron monument and updated ties.

June 20, 2002 - Found cast iron monument and updated ties. Established NAD 1983 (1996 adj.) Anoka County project coordinates by static GPS methods.

February 15, 2013 - Found cast iron monument and updated ties.

May 3, 2018 - Found cast iron monument up 0.1'± and updated ties.

November 1, 2021 - Found cast iron monument, verified position by VRS GPS method and updated ties.