

# CERTIFICATE OF LOCATION OF GOVERNMENT CORNER

County of Anoka

State of Minnesota

## Meander Corner of Sec. 35 Township 33 Range 23

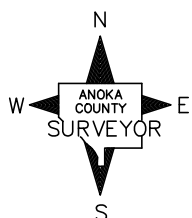
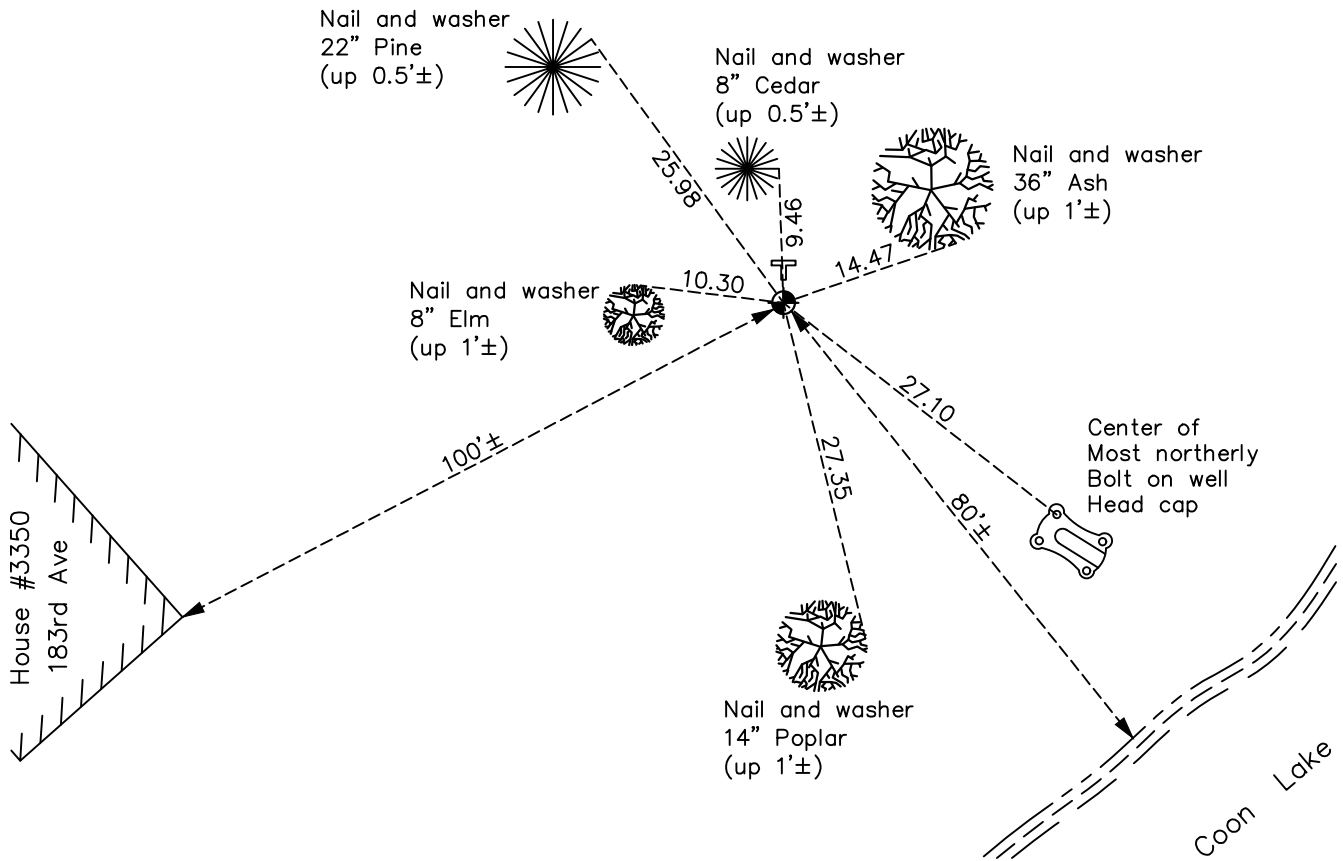
(Meander Corner No. 15—on west line of section)

On the 14th day of August, 1974, the described corner was evidenced by a 1 1/2" iron pipe

and to perpetuate the location of said corner, at the exact location thereof, a permanent marker was placed consisting of a cast iron monument

AND on the 27th day of October, 2021, said permanent marker was found down 0.2'± with a "T" post on the north side and the ties were updated

Updated reference ties are as shown below.



Revision Date  
 01/21/2022

N.A.D. 1983 Coordinates  
 (1996 Adjustment)

County Project Coordinates	
Northing	<u>196885.4544</u>
Easting	<u>521318.5335</u>
Date	<u>3/18/03</u>

I hereby certify that this United States public land survey monument record is correct and complete to the best of my knowledge and belief.  
David Zieglmeier Date 2/1/23  
 David Zieglmeier Anoka County Surveyor  
 Minnesota License Number 46179

# HISTORY OF GOVERNMENT CORNER

Page No. 116

County of Anoka

State of Minnesota

## Meander Corner of Sec. 35 Township 33 Range 23 (Meander Corner No. 15—on west line of section)

### **CORNER HISTORY:**

January 20, 1961 - Found 1-1/2" iron pipe down 0.5' and established ties to iron pipe.

June 9, 1965 - Found iron pipe and updated ties.

August 14, 1974 - Replaced iron pipe with a cast iron monument flush and updated ties.

July 20, 1977 - Found cast iron monument and updated ties.

June 19, 1981 - Found cast iron monument and updated ties.

July 9, 1984 - Found cast iron monument and updated ties.

June 4, 1987 - Found cast iron monument and updated ties.

August 18, 1992 - Found cast iron monument and updated ties.

August 18, 1997 - Found cast iron monument and updated ties.

March 18, 2003 - Established NAD 1983 (1996 adj.) Anoka County project coordinates by static GPS methods.

April 4, 2013 - Found cast iron monument and updated ties.

May 31, 2018 - Found cast iron monument down 0.3'± and updated ties.

October 27, 2021 - Found cast iron monument down 0.2'±, verified position by VRS GPS method and updated ties.