

CERTIFICATE OF LOCATION OF GOVERNMENT CORNER

County of Anoka

State of Minnesota

Witness Corner of Sec. 35 Township 33 Range 23

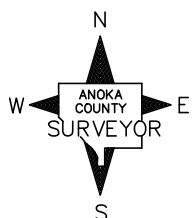
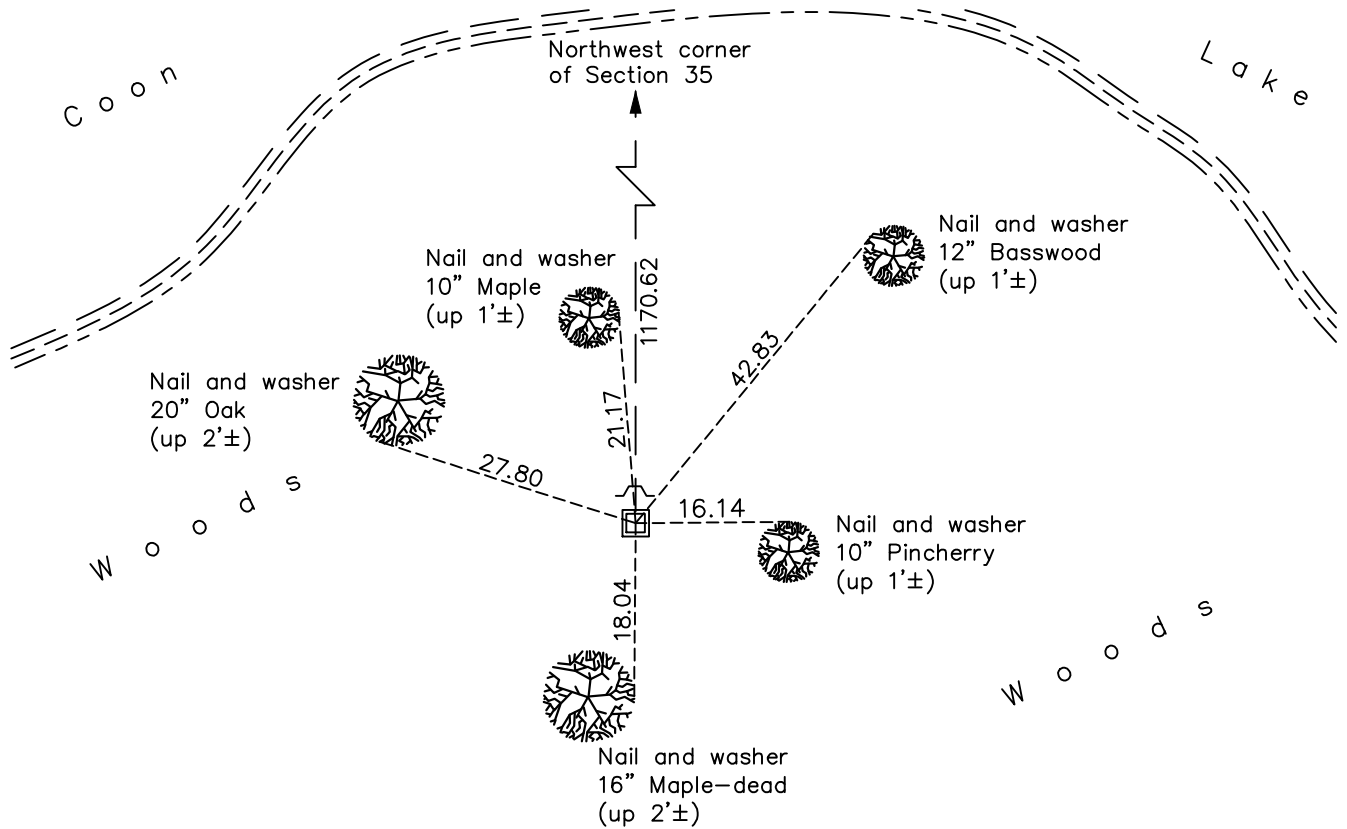
(Witness to Meander Corner No. 6—on west line of section)

On the 11th day of June, 2013, the described corner was evidenced by a cast iron monument

and to perpetuate the location of said corner, at the exact location thereof, a permanent marker was placed consisting of a 2"x2"x6' steel Telspar monument with punchmarked 'County Surveyor' cap with a sign and post on the north side

AND on the 4th day of November, 2021, said permanent marker was found and the ties were updated.

Updated reference ties are as shown below.



Revision Date

01/21/2022

N.A.D. 1983 Coordinates
(1996 Adjustment)

County Project Coordinates	
Northing	<u>199816.5195</u>
Easting	<u>521257.1488</u>
Date	<u>3/18/03</u>

I hereby certify that this United States public land survey monument record is correct and complete to the best of my knowledge and belief.

David Zieglmeier Date 2/1/23

David Zieglmeier Anoka County Surveyor
Minnesota License Number 46179

HISTORY OF GOVERNMENT CORNER

Page No. 117

County of Anoka

State of Minnesota

Witness Corner of Sec. 35 Township 33 Range 23
(Witness to Meander Corner No. 6—on west line of section)

CORNER HISTORY:

February 1, 1961 - Found 1/2" iron pipe up 0.5'± and established ties to monument.

June 9, 1965 - Found 1/2" iron pipe up 0.3'± and updated ties.

August 16, 1974 - Replaced iron pipe with cast iron monument and updated ties.

July 22, 1977 - Found cast iron monument and updated ties.

June 12, 1981 - Found cast iron monument and updated ties.

July 18, 1984 - Found cast iron monument and updated ties.

June 4, 1987 - Found cast iron monument and updated ties.

March 18, 2003 - Established NAD 1983 (1996 adj.) Anoka County project coordinates by static GPS methods.

April 3, 2013 - Found cast iron monument missing.

June 11, 2013 - Set a 2"x6' square steel Telspar monument with punchmarked 'County Surveyor' cap and a sign/post on north side. Updated the ties.

May 17, 2019 - Found 2" square steel Telspar monument w/punchmarked 'County Surveyor' cap. Updated ties.

November 4, 2021 - Found 2" square steel Telspar monument w/punchmarked 'County Surveyor' cap. Verified position by VRS GPS method. Updated ties.